

# QWEST ETHERNET PRIVATE LINE SERVICES

## **BUSINESS CHALLENGES**

Businesses continue to migrate to Ethernet solutions from legacy services because of its renowned convenience, manageability and the large bandwidth benefits that it offers. Ethernet allows businesses to easily extend their LAN environment to seamlessly serve other locations, resulting in greater operational efficiency. However, many business applications require the dedicated performance of a private line service in order to satisfy the low latency, high security and reliability requirements. Alternative best-effort Ethernet services don't provide the same level of consistent performance as an Ethernet Private Line Service because of its dedicated nature, underlying architecture and resiliency.

## **THE QWEST SOLUTION**

Now businesses can enjoy the convenience of Ethernet and the performance of private line with Qwest Ethernet Private Line Services. Whether across the metro or across the country, Qwest's Ethernet Private Line (EPL) service offers large bandwidth and superior performance backed by Qwest's 99.999 percent service level agreement (SLA). Built on a highly-reliable four-fiber bidirectional line switched ring (BLSR) SONET domestic network, the EPL service allows customers to receive a standard Ethernet interface in order to provide simplified networking and cost effectiveness. Because EPL is provisioned over Qwest's SONET rings, the service is automatically switched to protect route in the event of an outage condition.

Qwest Ethernet Private Line services are a point-to-point, dedicated optical data service that encapsulates Ethernet traffic into the Qwest SONET network. The standard service provides fixed bandwidth for large bandwidth users ranging from 100 Mbps – 1 Gbps and hands-off a standard Ethernet interface to meet the needs of today's most demanding network applications.

The service is offered in long-haul intercity (Ethernet Private Line) or intracity configurations (Metro Ethernet Private Line) in major markets across the U.S.

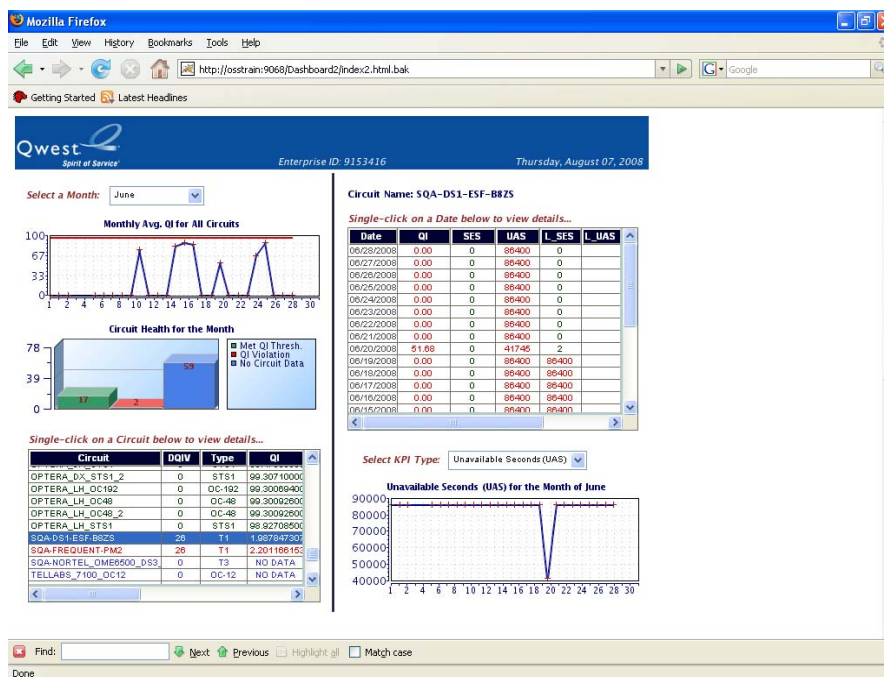
## **Who needs Ethernet Private Line Service?**

- Large bandwidth users located either within a metropolitan area or with locations in different domestic metropolitan areas.
- Users of high bandwidth applications for data, voice, video and Internet.
- Companies connecting data centers and sensitive applications like disk mirroring.
- Companies who require maximum circuit uptime and high security requirements.

## **QWEST ETHERNET PRIVATE LINE SERVICE BENEFITS**

- Convenience: Single connection allows customers to aggregate multiple traffic types and extend the LAN environment.

- Reliability: The Qwest all-fiber SONET guarantees up to a 99.999 percent SLA. Fully-dedicated protect path and 50ms restoration time. Proactive Network ring testing.
- Business customers have access to historical and near real-time performance reports via the Qwest Customer portal QControl™ to monitor a circuit's performance.
- Transparency of VLANs and layer 2/3 protocols.
- Security: Fiber-optic circuits are tamper resistant, providing an extra level of security. 24/7/365 NOC monitoring; network security audits and policies.
- Technical Expertise and Flexibility: Qwest designs custom solutions to address customer's business problems. AdaptiveBuild® combines Qwest's proprietary market knowledge with design and construction expertise to produce network solutions that are purpose-built for specific application and service needs.
- Available – Service is offered in 30 domestic metropolitan markets and 79 long-haul markets.
- Simplicity: Single contract covers both service options.



## WHY QWEST?

- Qwest offers a full suite of complementary Ethernet and IP services.
- Qwest is recognized as a leader in the Gartner Magic Quadrant for U.S. Network Service Providers.
- Professional, responsive account management with a commitment to service that sets Qwest apart from the competition.

Qwest Communications Corporation Domestic Ethernet Private Line service is available to Qwest® business customers in the contiguous U.S. states, subject to availability of facilities. Synchronous optical network (SONET) equipment needed to terminate circuits. Only on-net Ethernet Private Line circuits are offered today because of proprietary Ethernet mapping protocol requirements. Installation, expedite, Ethernet local access and extended wiring charges may apply.