

# QWEST PRIVATE LINE DS-1 SERVICE

## DIGITAL TRANSPORT FOR VOICE, VIDEO AND DATA

Many businesses accommodate their growing voice, data and video transport needs by purchasing additional low-speed circuits. Over time, that can add up to excessive circuits and expense. Qwest® DS-1 Service can reliably and securely aggregate that traffic on a single, cost-effective, high-speed circuit eliminating the need for multiple low-speed channels.

## DESCRIPTION

Qwest DS-1 Service is a dedicated, full duplex, point-to-point, high-capacity Private Line transport service (PLTS) that provides transmission of isochronous serial data at 1.544Mbps. The service has the capacity of 24 voice-equivalent channels. Because the transmission is digital, the signal is clean and free of cross talk, amplified noise and distortion. DS-1 channels are provided between customer-designated premises or between a customer-designated premises and a Qwest central office. The service is provisioned on copper, fiber and in some instances, microwave radio. In some high-density cities, DS-1 is provisioned on a synchronous optical network (SONET)-based interoffice network that connects key serving wire centers.

## FEATURES

DS-1 offers a variety of optional features and functions:

- Central office multiplexing—Has the capacity of 24 voice-equivalent channels.
- Central office multiplexer-to-multiplexer connecting arrangement interconnects at the DS-1 level.
- Command a Link™ gives you control of services.
- Clear channel capability transports data without constraints.
- Environmental cabinet terminates service on a pole or outside a building.
- Protection options:
  - Self-healing alternate route protection (SHARP) protects the local loop.
  - SHARP Plus extends protection to the interoffice portion of the circuit.
  - Automatic loop transfer protects against failure of copper facilities.
- The main characteristics of DS-1 are framing and line code:
  - Framing options include D4 framing, extended super frame (ESF), non-ANSI (American National Standards Institute) and free framing.
  - Line code options, identified by network channel interface (NCI) codes, include alternate mark inversion (AMI) and binary eight zero substitution (B8ZS).

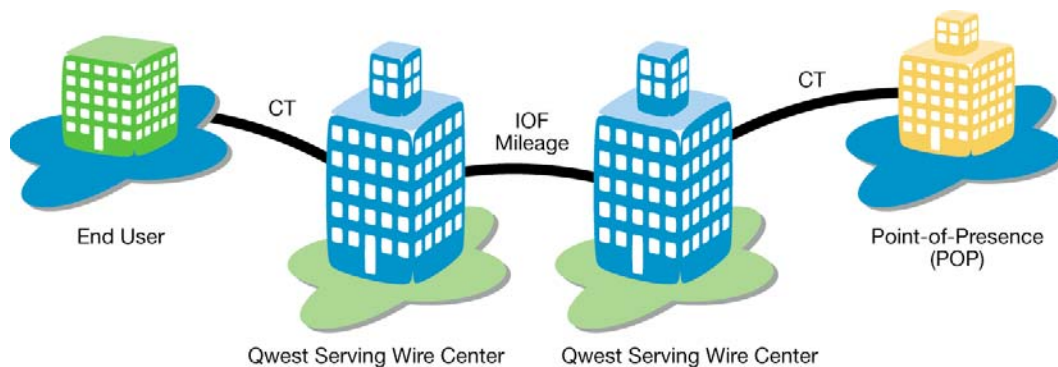
## BENEFITS

- Ensures reliable, secure transport of high-volume communications between two locations.
- Aggregates your point-to-point voice, data and video traffic on a single dedicated, cost-effective circuit.
- Improves response time.
- Provides clean, pure transmissions.
- Provides a service guarantee—provisioning and repair.
- Enhances the quality and utility of your service with optional features.

## HOW IT WORKS

DS-1 channels can be provided between two of your designated locations, or between one location and a Qwest wire center.

### Point-to-Point Configuration



IOF = Interoffice facility  
CT = Channel termination

## WHY BUY FROM QWEST?

- Qwest provides self-healing alternate route protection option, which offers instantaneous service restoration.
- Available throughout the 14-state Qwest local service territory.
- Discounts are available with regional commitment program and term discount pricing plans.
- Contract terms stabilize your cost over a long term.
- Service level agreements guarantee provisioning due dates and provide credit for service interruptions.
- Qwest is a facilities-based telecommunication provider with a legacy of experience and service.

## OTHER PRODUCTS AVAILABLE FROM QWEST

In addition to Qwest DS-1 Service, Qwest has an array of products to meet your needs, including:

- Qwest<sup>®</sup> DS-3 Service
- Qwest<sup>®</sup> Synchronous Service Transport (SST)
- Qwest<sup>®</sup> Self-Healing Network Service (SHNS)

Qwest Corporation Private Line DS-1 Service is only available in Qwest's local service territory in the states of AZ, CO, ID, IA, MN, MT, NE, NM, ND, OR, SD, UT, WA and WY. Minimum term of commitment required. Termination charges apply.