

Windows Vista™

How to View Basic Network Settings

Use this document if:

- You need assistance accessing basic network settings to view the status of your network connection.
- You want to review network connection diagnostics or look for issues that could cause problems with your Internet connection.
- You would like to adjust your TCP/IP settings from dynamic to static.

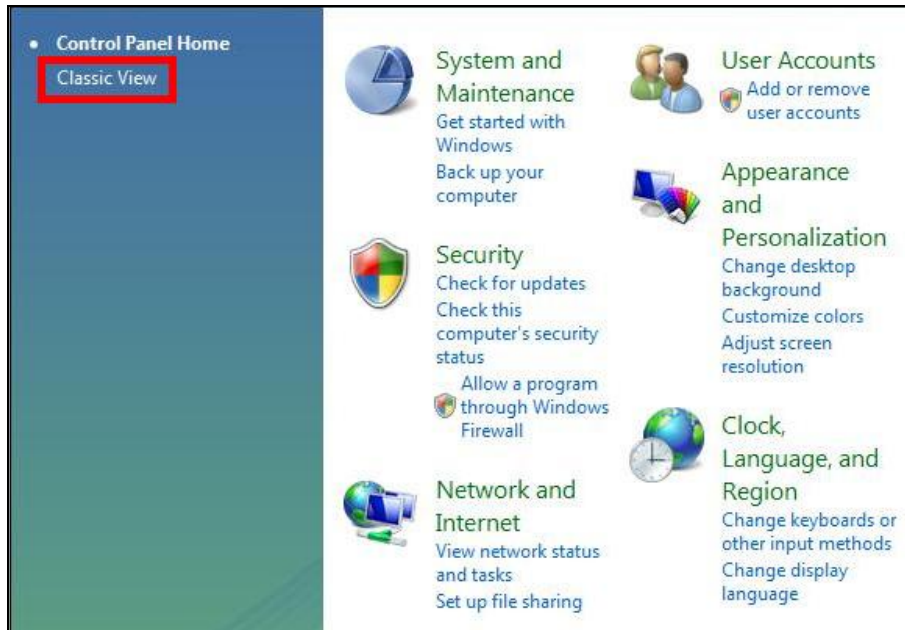
This document assumes:

1. You are a Windows Vista™ user.
2. You have an Internet connection.

1. Click on the Windows **Start** menu. Then, select **Control Panel** on the right.



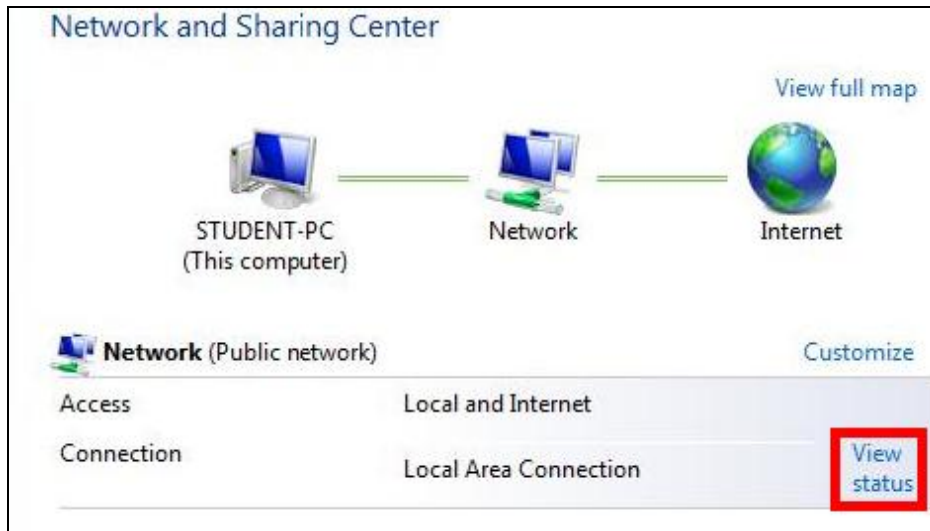
- If the following screen appears, select the **Classic View** link in the upper left-hand corner of the screen.



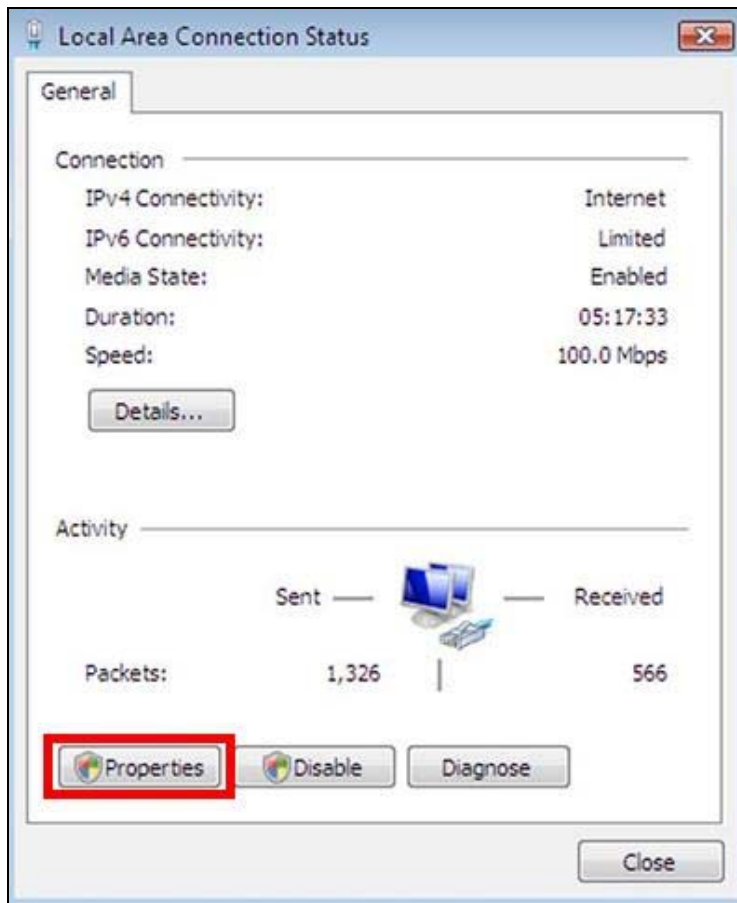
- Double-click on the **Network and Sharing Center** icon.



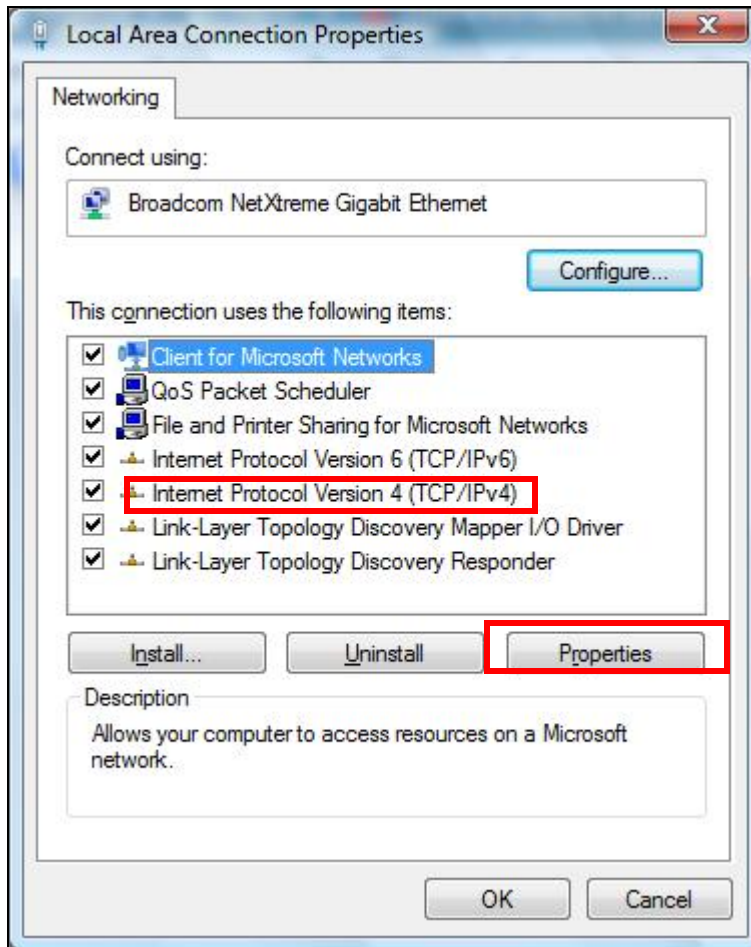
4. Select **View status**.



5. Select **Properties**.



6. Highlight **Internet Protocol Version 4 (TCP/IPv4)**. Then, select **Properties**.



7. When the following screen appears, you may adjust the TCP/IP settings so that your computer will communicate with your local network.

After the changes are made, select **Ok**.

