



How to Add or Remove static IP addresses in Windows® 2000

**Internet Service Provider (ISP):
All**

Use this document if:

- You need to add or remove static IP addresses in Windows 2000.

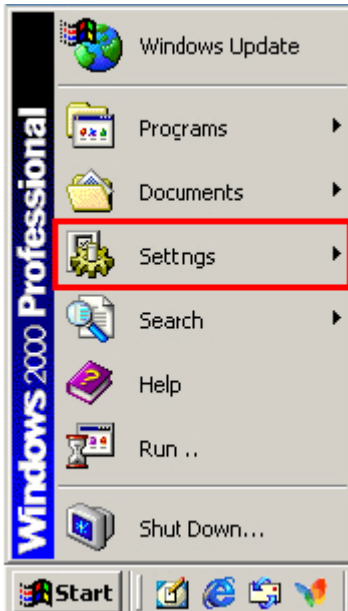
This document assumes:

- You are using Windows 2000.
- You have full Administrative rights on your computer.

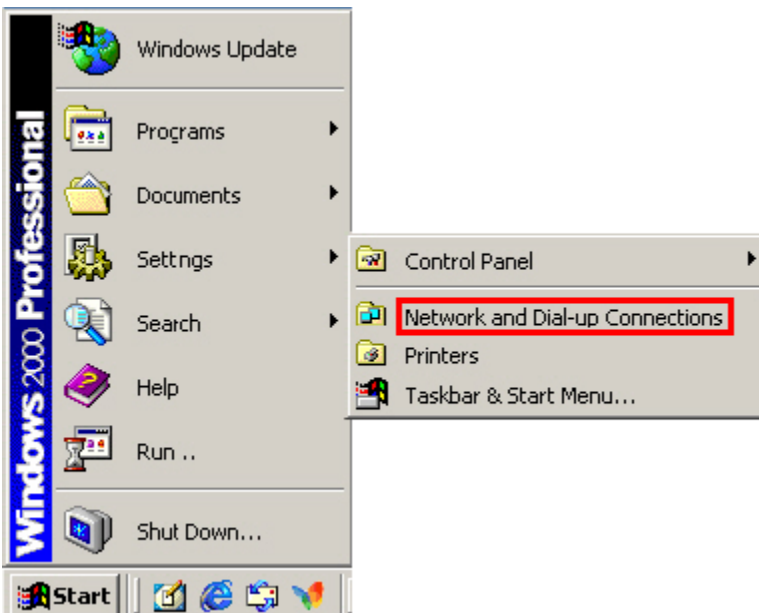
1. Select **Start**.



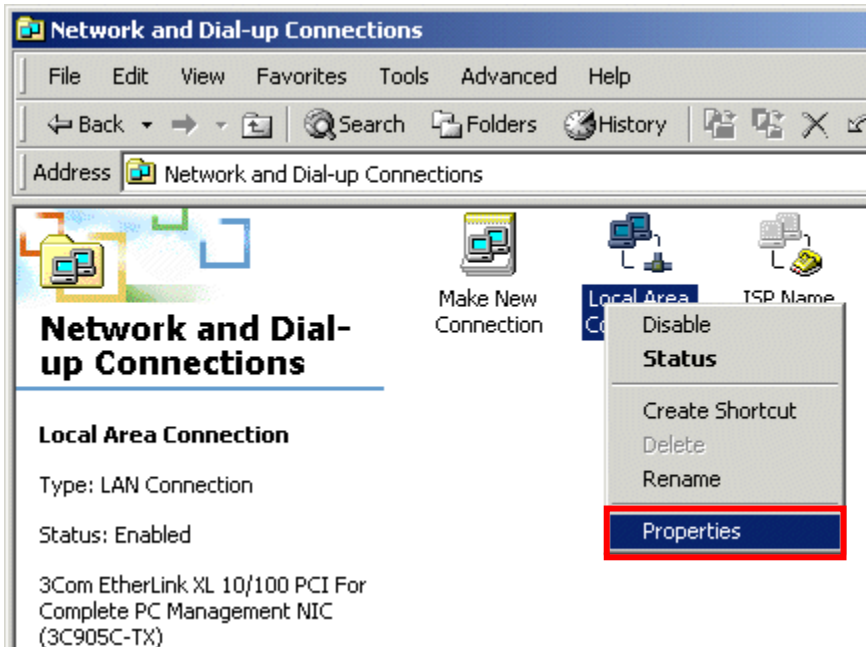
2. Select **Settings**.



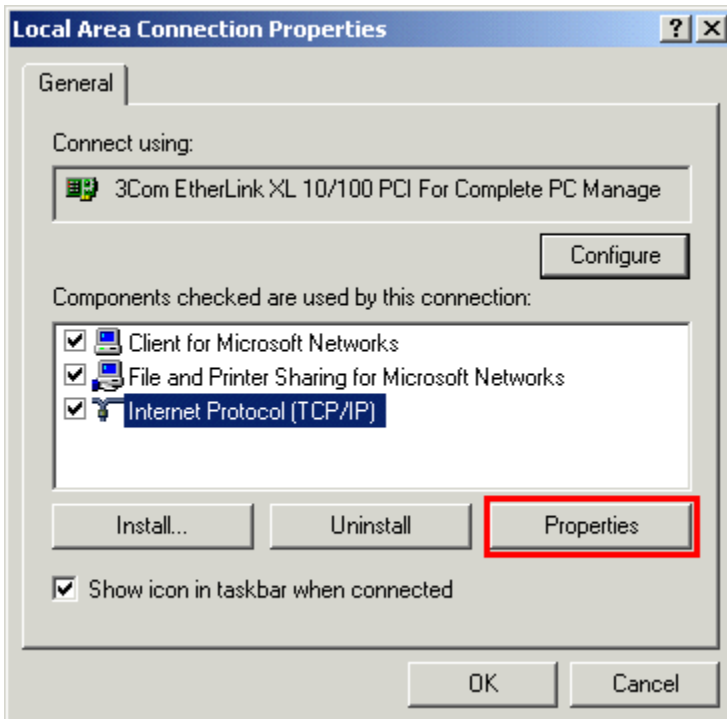
3. Select **Network and Dial-up Connections**.



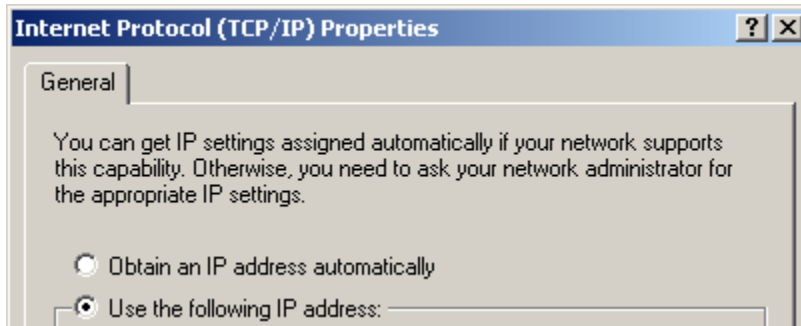
4. Right-click on **Local Area Connection**. Select **Properties**.



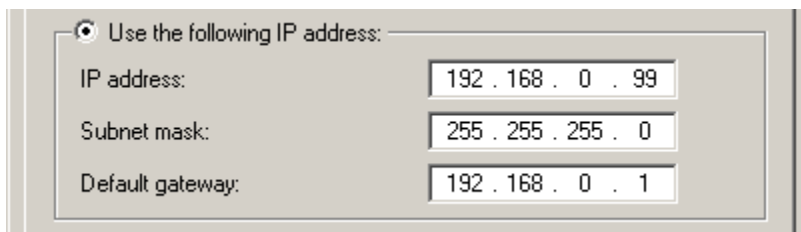
5. Highlight **Internet Protocol (TCP/IP)**. Select **Properties**.



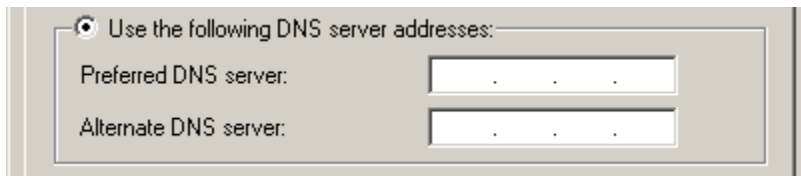
6. Select **Use the following IP address**.



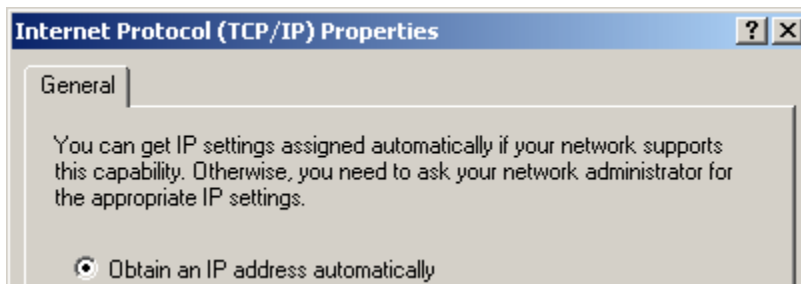
7. Type in your Static IP, Subnet Mask IP and Default Gateway IP.



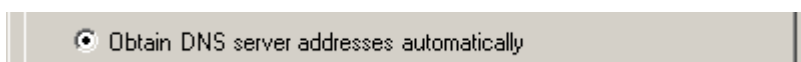
8. Select **Use the following DNS server addresses** and enter your DNS Server IP addresses.



9. To remove static IP settings, select **Obtain an IP address automatically**.



10. Select **Obtain DNS server address automatically**. Select **OK**.



11. Select **OK** to complete the process, close all open windows, and restart the computer if requested.

