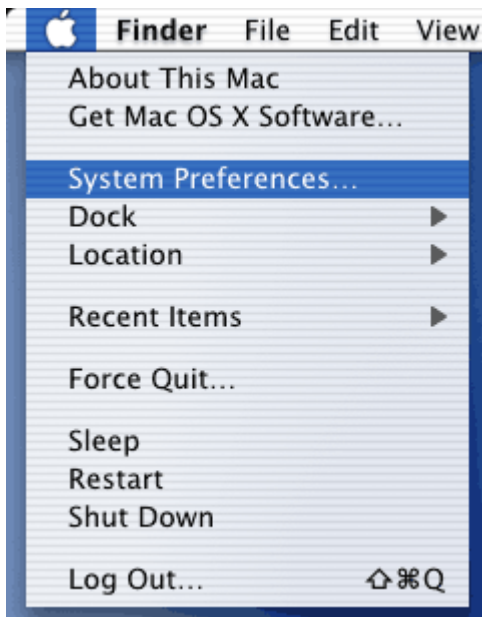


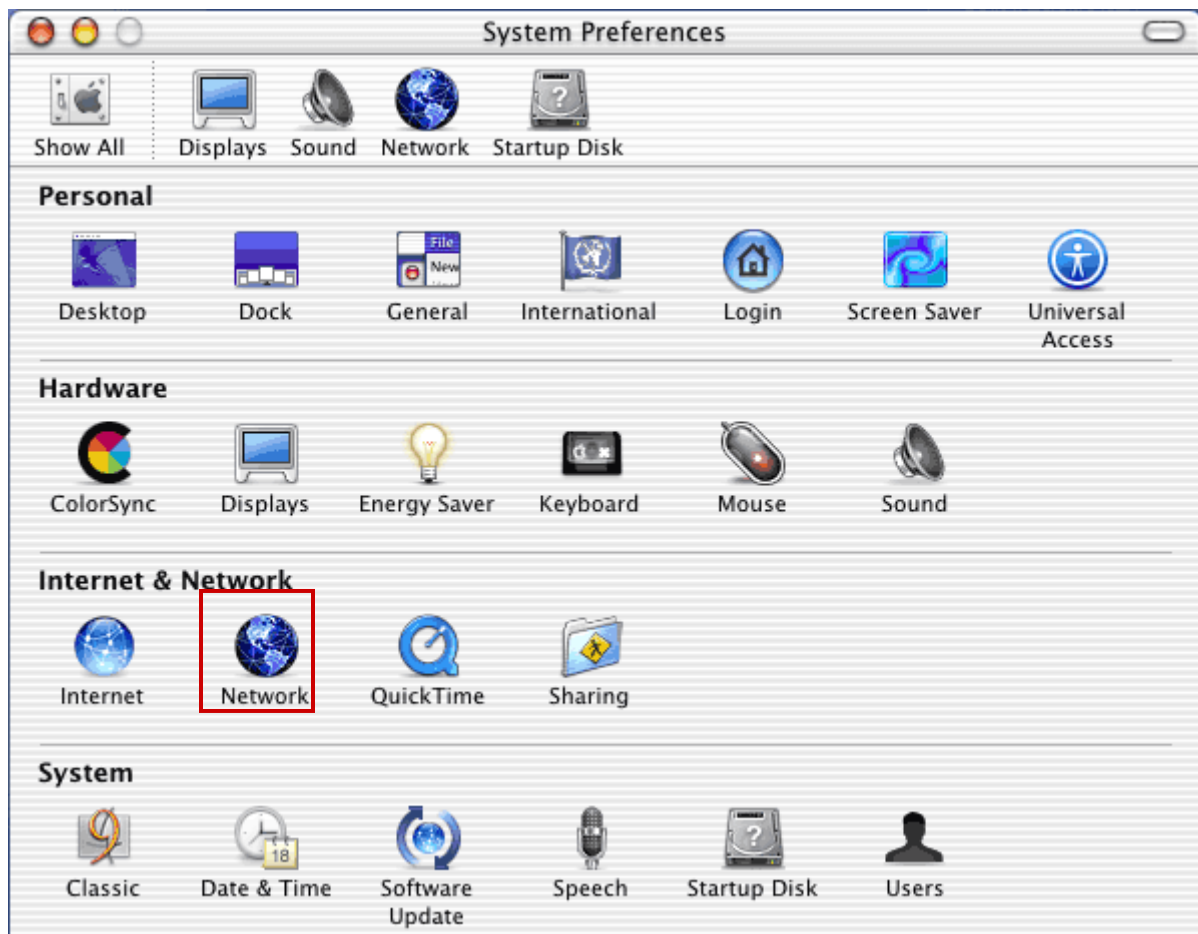
Mac OS® X – Network Support

How to View Network Settings Mac OS 10.x-10.2

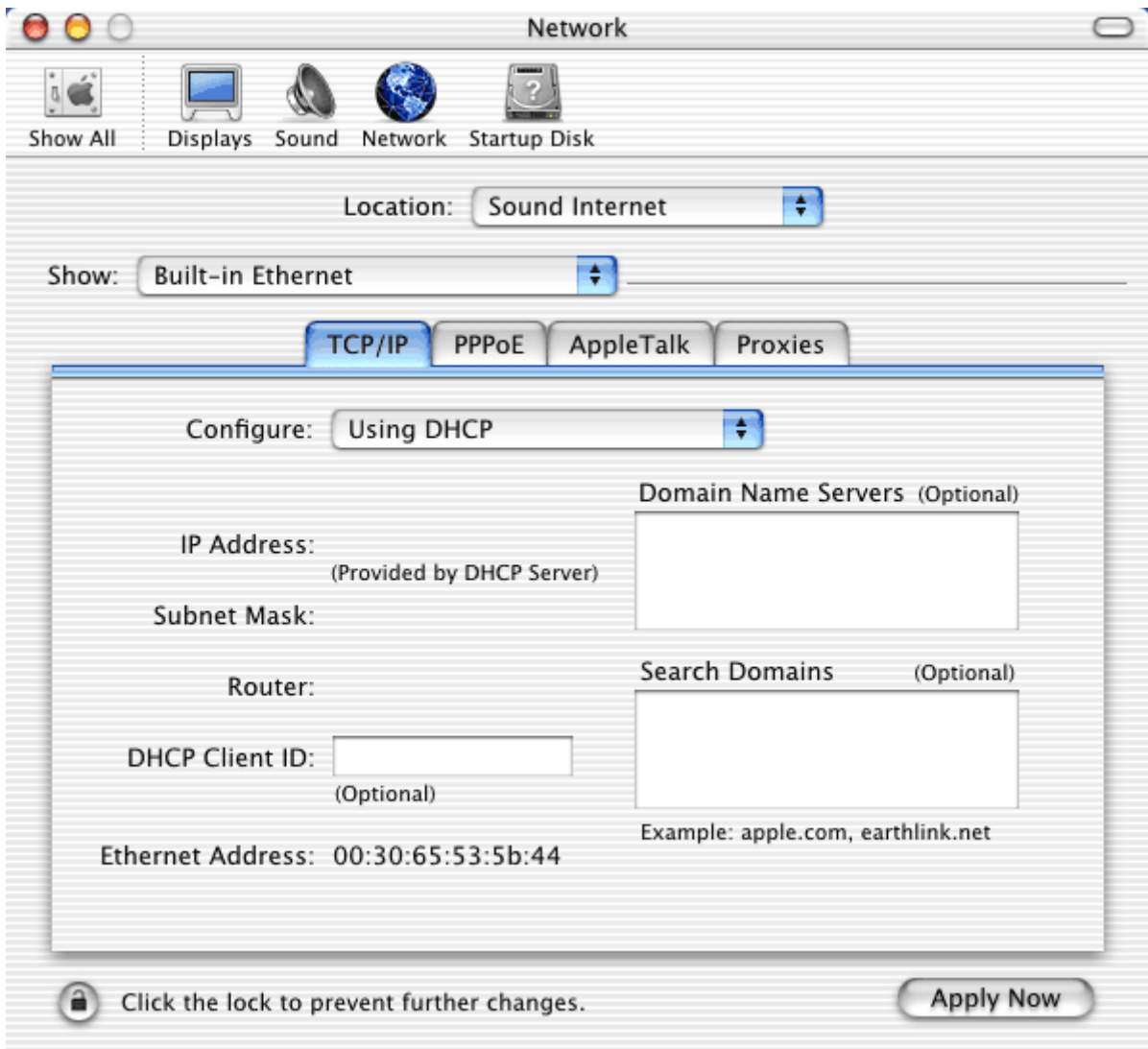
1. Select **System Preferences** from the Apple menu.



2. Select **Network**.



3. In the “Show” field, confirm that **Built-in Ethernet** is selected. Select the **TCP/IP** tab. For a Dynamic IP address, select **Using DHCP** in the “Configure” field.



4. Select the **Proxies** tab to check the proxies.
5. After making your changes, select the **Apply Now** button. Select the **red circle** in the top left corner to exit.