

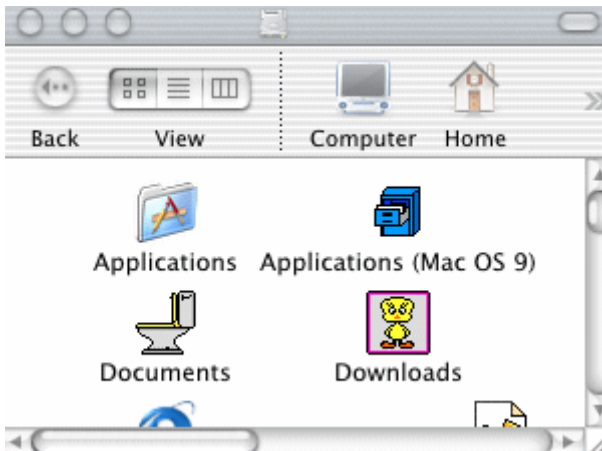
## Mac OS® X – Network Support

### How to Use Traceroute Mac OS 10.x-10.2

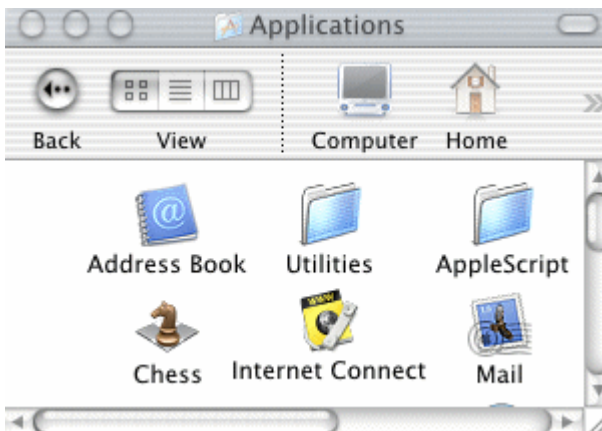
1. Select the **Hard Drive**.



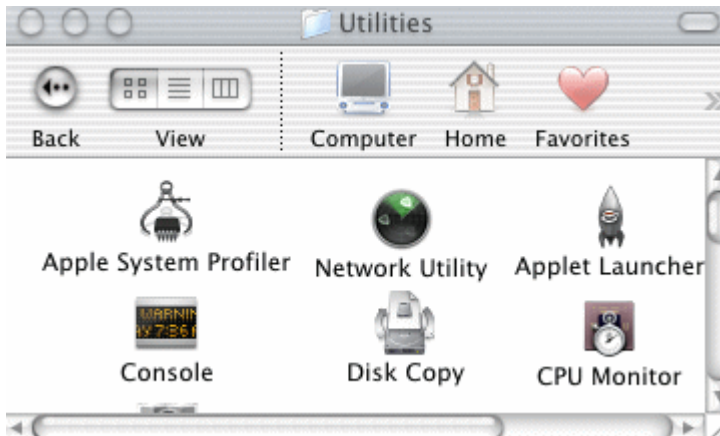
2. Select **Applications**.



3. Select **Utilities**.



4. Select **Network Utility**.



5. Select the **Traceroute** tab. Type the **IP address** or the **DNS address** to trace. Select **Start** once it appears on your screen.



6. When finished viewing the results, select the **red circle** in the top left corner to exit.