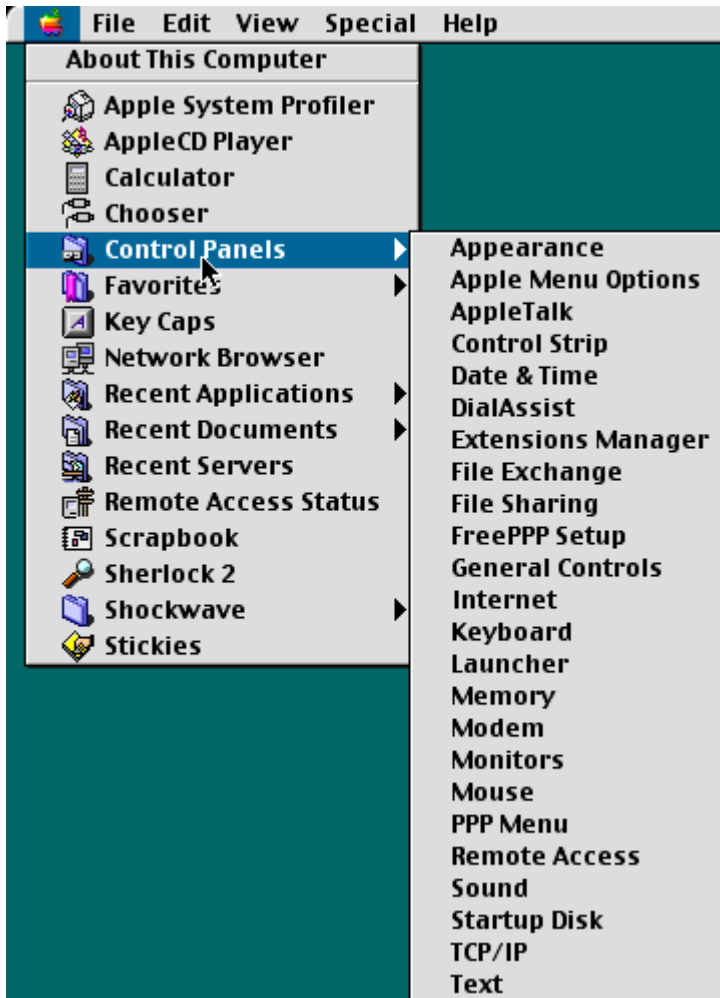


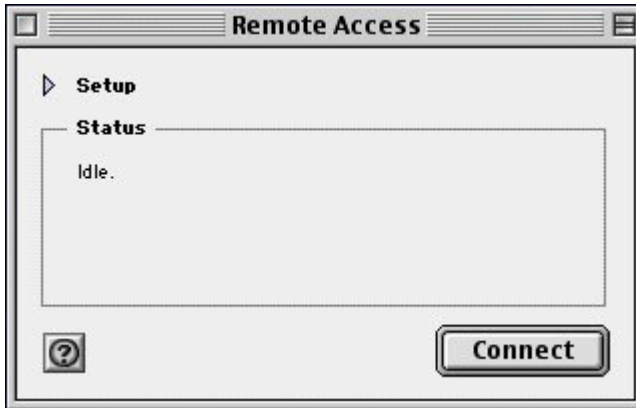
Mac OS® 8/9 – Dial-Up Support

How to View Dial-Up Connection Configuration

1. Select **Control Panels** from the Apple menu. Then, select **Remote Access** from the options on the right.



2. Select the **Triangle** next to Setup. It should point down.



3. Select **Registered User**. Type the **user name**, **password** and **phone number** into the corresponding fields. Select the **Save password** checkbox so you don't have to enter it every time you connect. Select the **Options** button.



4. Under the **Redialing** tab, select options to match those listed in the picture below. Then, select the **Connection** tab.

The screenshot shows the 'Options' dialog box with the 'Redialing' tab selected. The 'Redial:' dropdown menu is set to 'Redial main number only'. Below it, the 'Redial' field is set to '5' times, and the 'Time between retries' field is set to '5' seconds. At the bottom right, there are 'Cancel' and 'OK' buttons.

5. Under the **Connection** tab, select options to match those listed in the picture below. Then, select the **Protocol** tab.

The screenshot shows the 'Options' dialog box with the 'Connection' tab selected. The 'Use verbose logging' checkbox is unchecked. Under the 'Reminders:' section, the 'Flash icon in menu bar while connected' checkbox is checked, while 'Prompt every 5 minutes to maintain connection' and 'Disconnect if idle for 10 minutes' are unchecked. At the bottom right, there are 'Cancel' and 'OK' buttons.

6. Select **PPP** in the “Use protocol” field. To dial automatically when necessary, select **Connect automatically when starting TCP/IP applications**. The other options are selected by default. Select **OK** to return to the main “Remote Access” screen.

