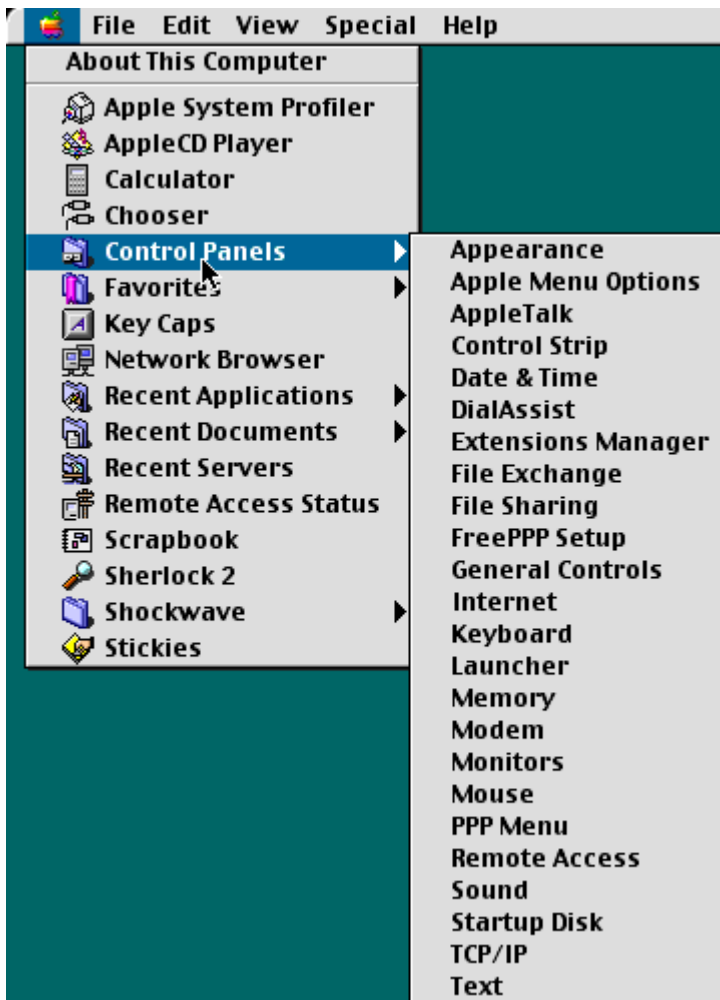


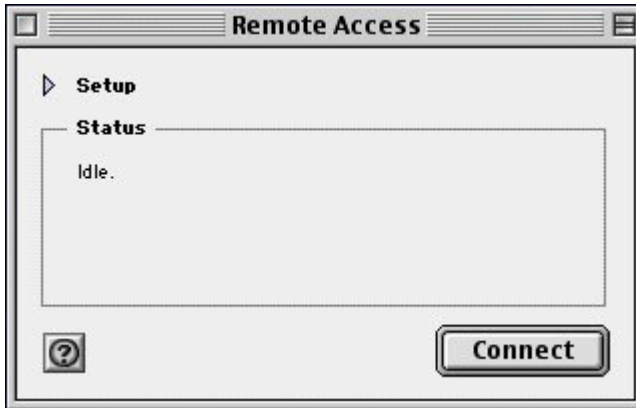
Mac OS® 8/9 – Dial-Up Support

How to Turn Off Automatic Dial-Up

1. Select **Control Panels** from the Apple menu. Then, select **Remote Access** from the options on the right.



2. Select the **Triangle** next to Setup. It should point down.



3. Select the **Options** button.



4. Under the **Protocol** tab, remove the checkmark by **Connect automatically when starting TCP/IP applications**. Select **OK** to return to the main "Remote Access" screen.

