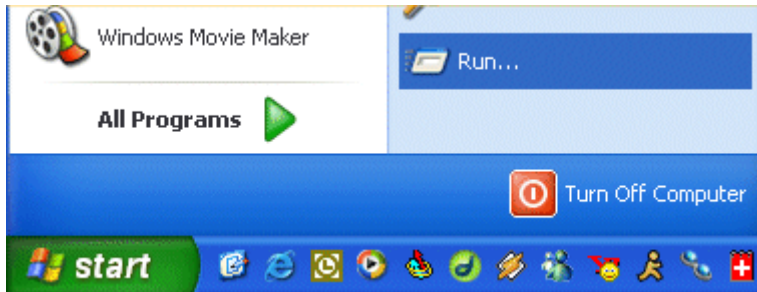


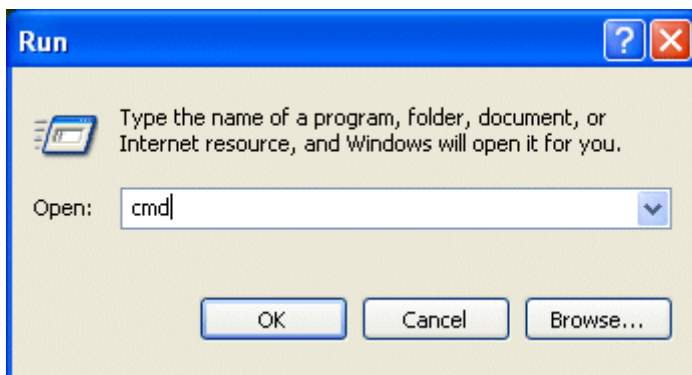
## Windows® XP – Network Support

### How to Use Ping

1. Select **Start**. Then, select **Run**.



2. Type **cmd**. Select **OK**.





3. At the blinking cursor, type **ping www.qwest.com**. Select **Enter**. This will send ping packets to the address specified. If you see four "Reply from" messages, the connection is working.

```
C:\Documents and Settings>ping www.qwest.com

Pinging qwest.com [155.70.40.50] with 32 bytes of data:

Reply from 155.70.40.50: bytes=32 time=78ms TTL=52
Reply from 155.70.40.50: bytes=32 time=77ms TTL=52
Reply from 155.70.40.50: bytes=32 time=75ms TTL=52
Reply from 155.70.40.50: bytes=32 time=75ms TTL=52

Ping statistics for 155.70.40.50:
    Packets: Sent = 4, Received = 4, Lost = 0 (0% loss),
    Approximate round trip times in milli-seconds:
        Minimum = 75ms, Maximum = 78ms, Average = 76ms

C:\Documents and Settings>
```

4. To ping just an IP address, type **ping** and the IP address. Select **Enter**. This will send ping packets to the address specified. If you see four "Reply from" messages, the connection is working.

```
C:\Documents and Settings>ping 155.70.40.50

Pinging 155.70.40.50 with 32 bytes of data:

Reply from 155.70.40.50: bytes=32 time=85ms TTL=52
Reply from 155.70.40.50: bytes=32 time=76ms TTL=52
Reply from 155.70.40.50: bytes=32 time=75ms TTL=52
Reply from 155.70.40.50: bytes=32 time=96ms TTL=52

Ping statistics for 155.70.40.50:
    Packets: Sent = 4, Received = 4, Lost = 0 (0% loss),
    Approximate round trip times in milli-seconds:
        Minimum = 75ms, Maximum = 96ms, Average = 83ms

C:\Documents and Settings>
```

5. To do a continuous ping, type **-t** at the end of your ping command. Select **Enter**. This will send continuous ping packets to the address specified. If you see "Reply from" messages, the connection is working. To stop the ping, select **Ctrl C** on the keyboard.

```
C:\Documents and Settings>ping 155.70.40.50 -t
```

```
Pinging 155.70.40.50 with 32 bytes of data:
```

```
Reply from 155.70.40.50: bytes=32 time=85ms TTL=52  
Reply from 155.70.40.50: bytes=32 time=76ms TTL=52  
Reply from 155.70.40.50: bytes=32 time=75ms TTL=52  
Reply from 155.70.40.50: bytes=32 time=96ms TTL=52  
Reply from 155.70.40.50: bytes=32 time=96ms TTL=52  
Reply from 155.70.40.50: bytes=32 time=96ms TTL=52  
Reply from 155.70.40.50: bytes=32 time=96ms TTL=52  
Reply from 155.70.40.50: bytes=32 time=96ms TTL=52  
Reply from 155.70.40.50: bytes=32 time=96ms TTL=52  
Reply from 155.70.40.50: bytes=32 time=96ms TTL=52
```

```
C:\Documents and Settings>
```

6. Type **exit** at the prompt to return to Windows.

## Additional Ping Commands

### Usage:

```
ping [-t] [-a] [-n count] [-l size] [-f] [-i TTL] [-v TOS]
[-r count] [-s count] [[-j host-list] | [-k host-list]]
[-w timeout] target_name
```

### Options:

-t	Ping the specified host until stopped To see statistics and continue, type Control-Break To stop, type Control-C
-a	Resolve addresses to hostnames
-n count	Number of echo requests to send
-l size	Send buffer size
-f	Set Don't Fragment flag in packet
-i TTL	Time To Live
-v TOS	Type Of Service
-r count	Record route for count hops
-s count	Timestamp for count hops
-j host-list	Loose source route along host-list
-k host-list	Strict source route along host-list
-w timeout	Timeout in milliseconds to wait for each reply