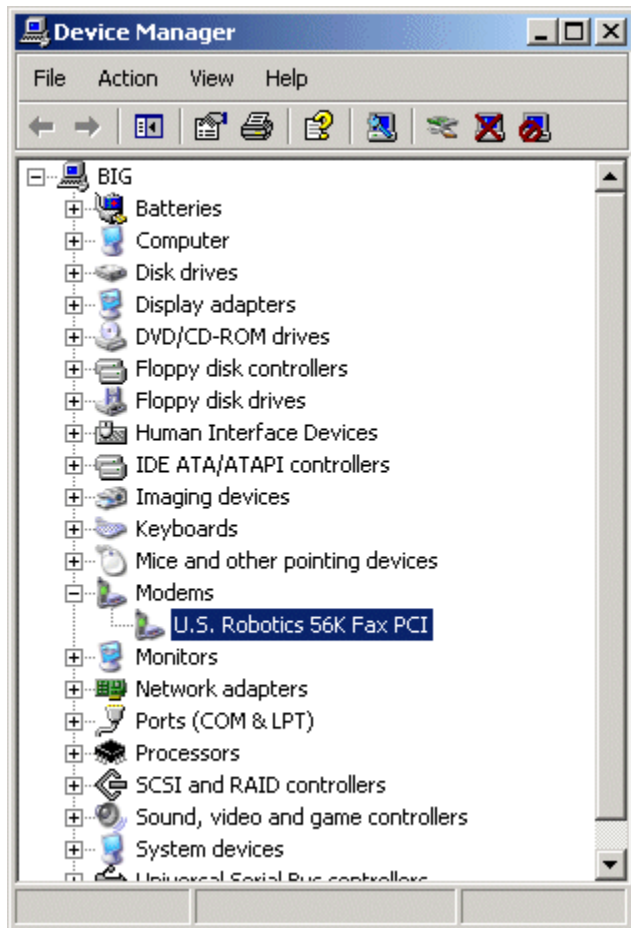


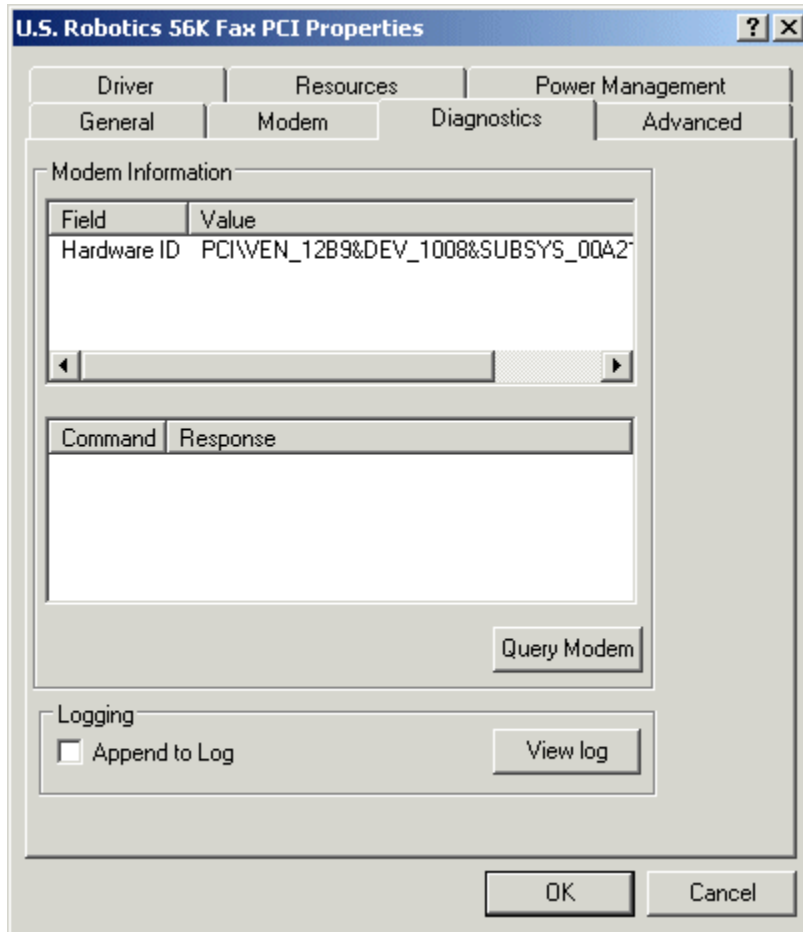
Windows® XP – Dial-Up Support

How to Check if a Modem is Working

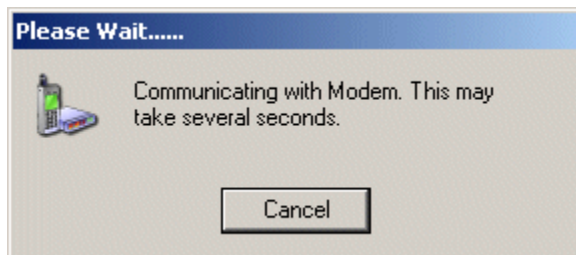
1. Right-click on **My Computer**. Select the **Hardware** tab. Select **Device Manager**. Then, select the **+ sign** next to Modems. Right-click on your **modem**. Select **Properties**.



2. Select the **Diagnostics** tab. Then, select the **Query Modem** button.



3. This screen will appear.



4. If Windows can communicate with modem, this screen will appear. Select **OK**.

