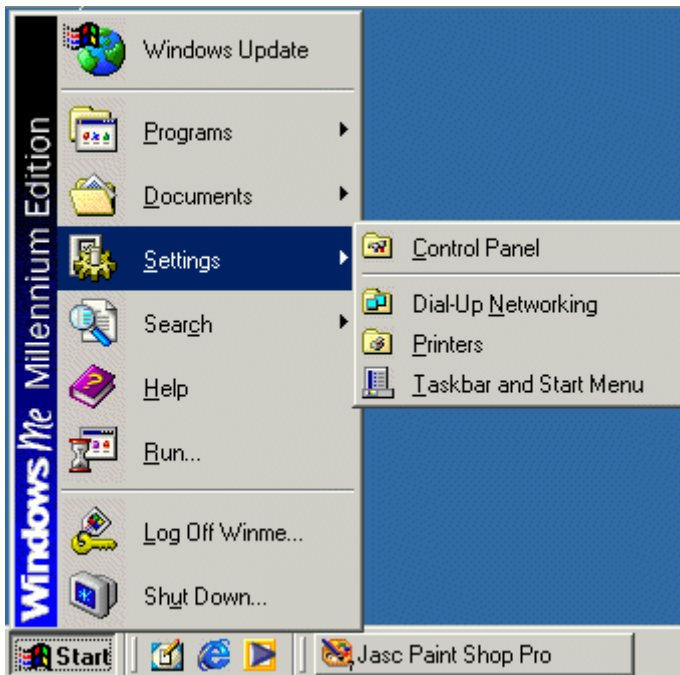


## Windows® ME – Network Support

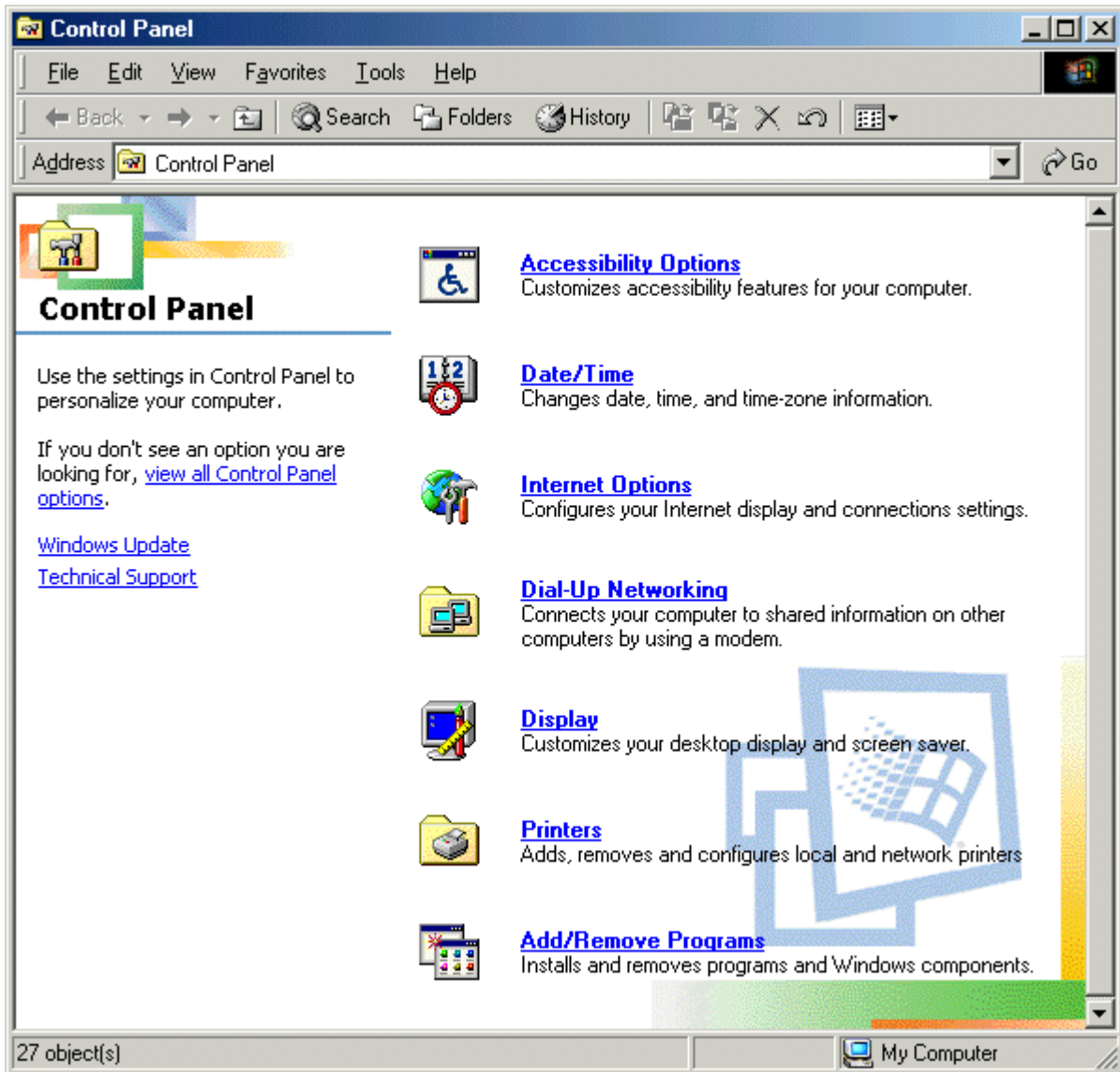
### How to View Network Settings

1. Select **Start**. Select **Settings**. Then, select **Control Panel** from the options on the right.

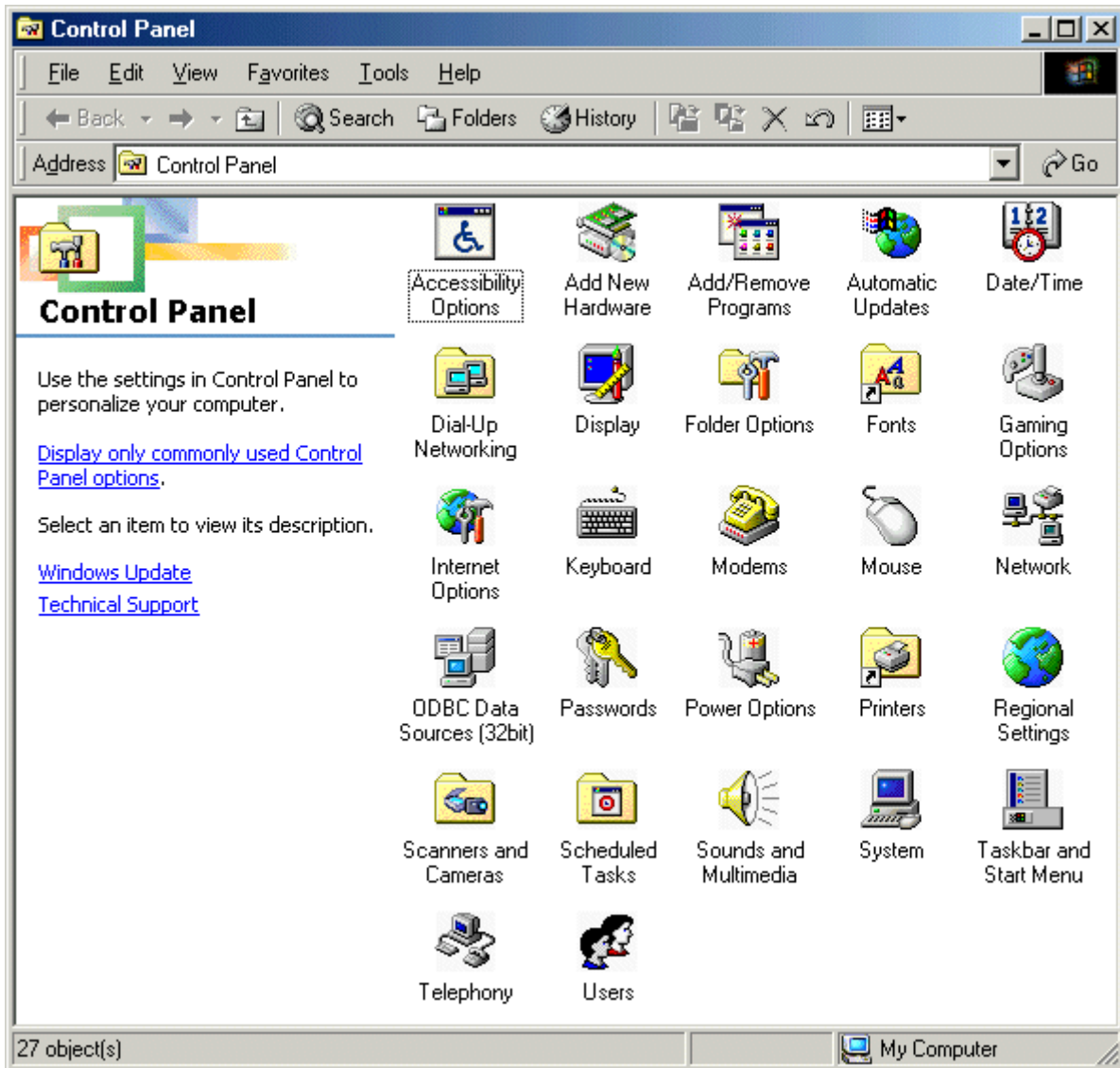


2. In the upper-left corner, select **View all Control Panel options**.

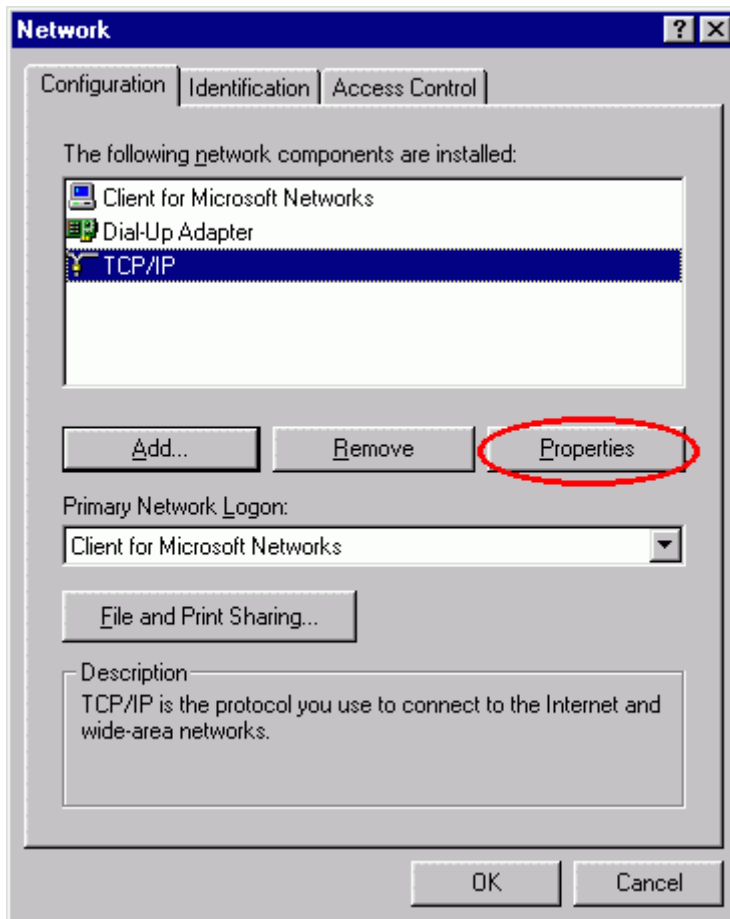
**NOTE:** If that option isn't available, continue on.



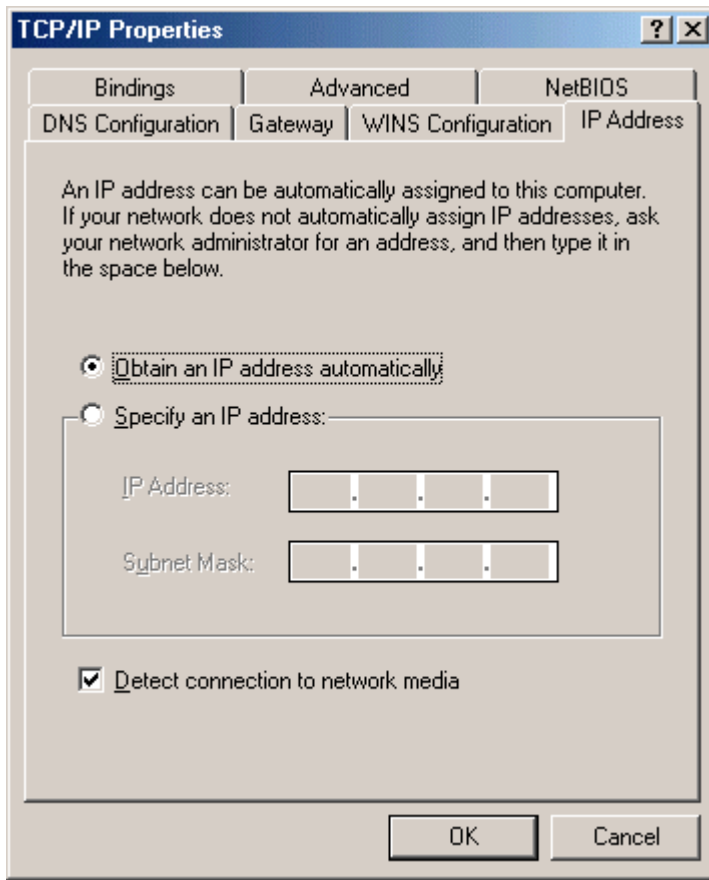
3. Double-click on **Network**.



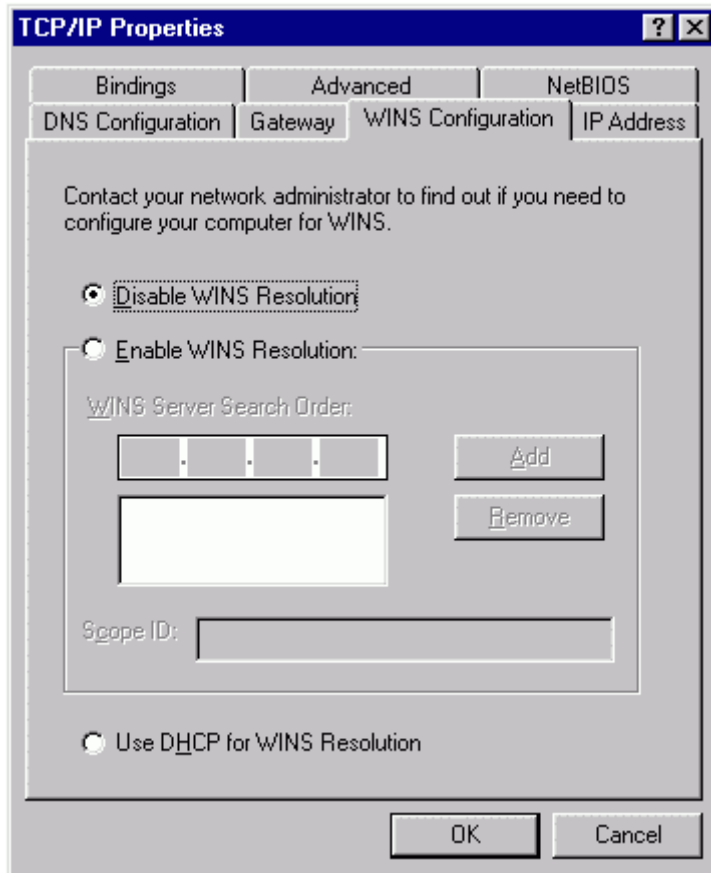
- Next, select **TCP/IP**. Select the **Properties** button.



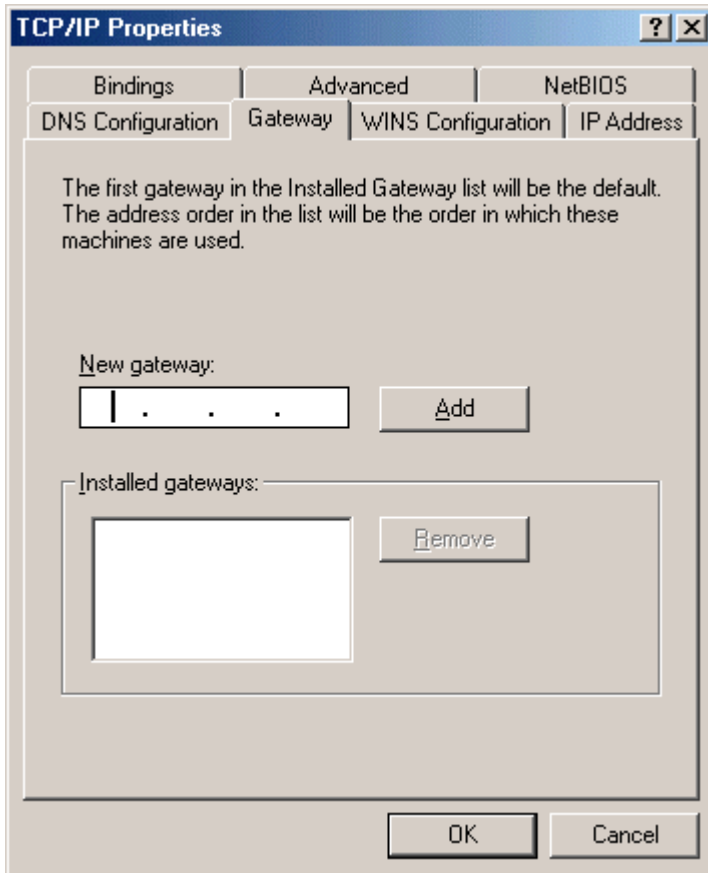
5. For dynamic connections, confirm that **Obtain an IP address automatically** is selected. Then, select the **WINS Configuration** tab.



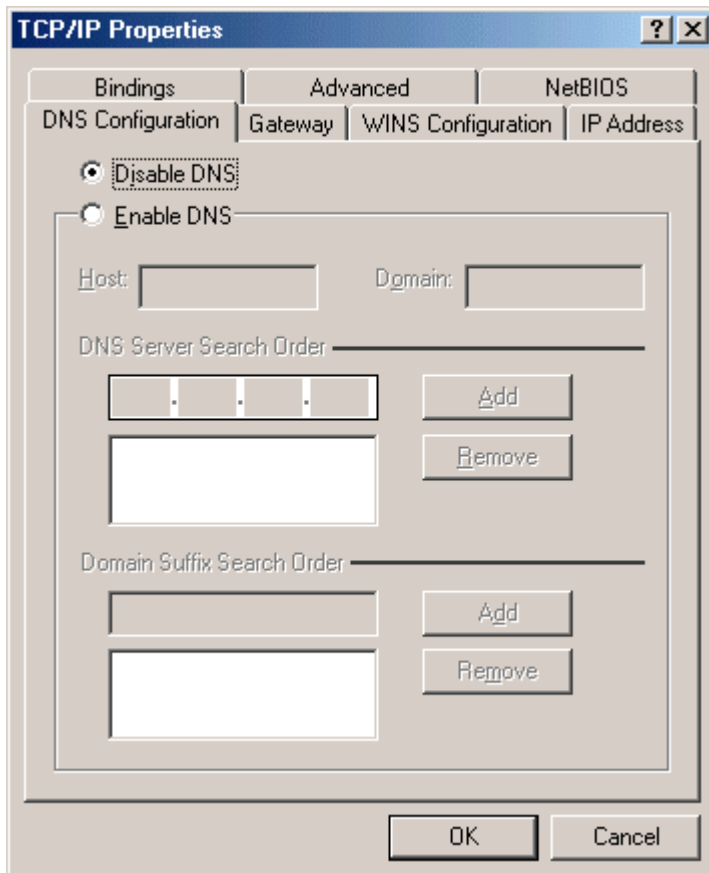
6. Select **Disable WINS Resolution**. Then, select the **Gateway** tab.



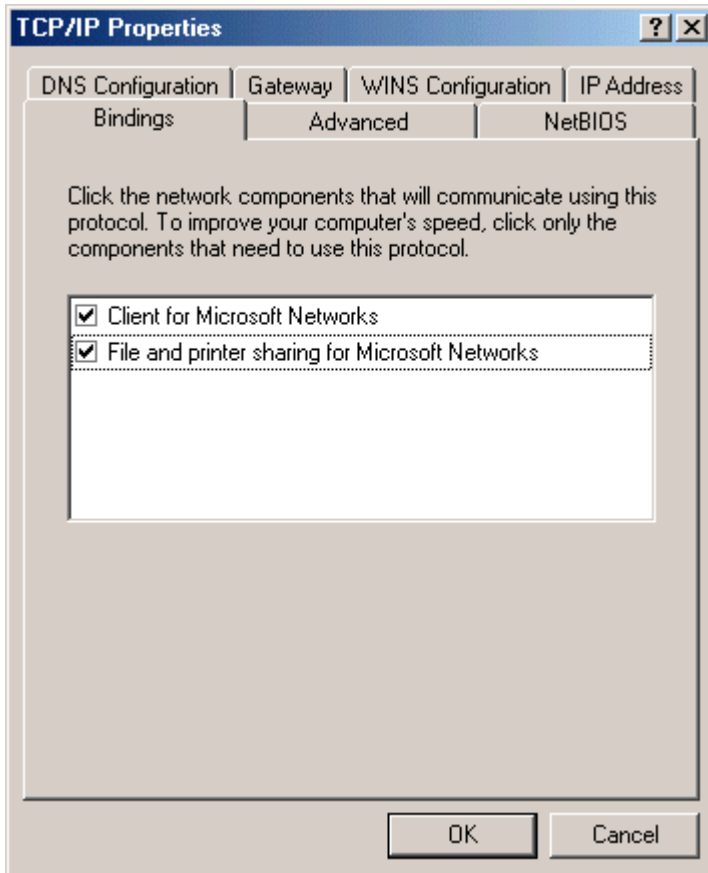
7. The **Installed Gateways** box should be empty. If a number is listed there, select it (so it's highlighted), and then select the **Remove** button. After you've made all your changes, select the **DNS Configuration** tab.



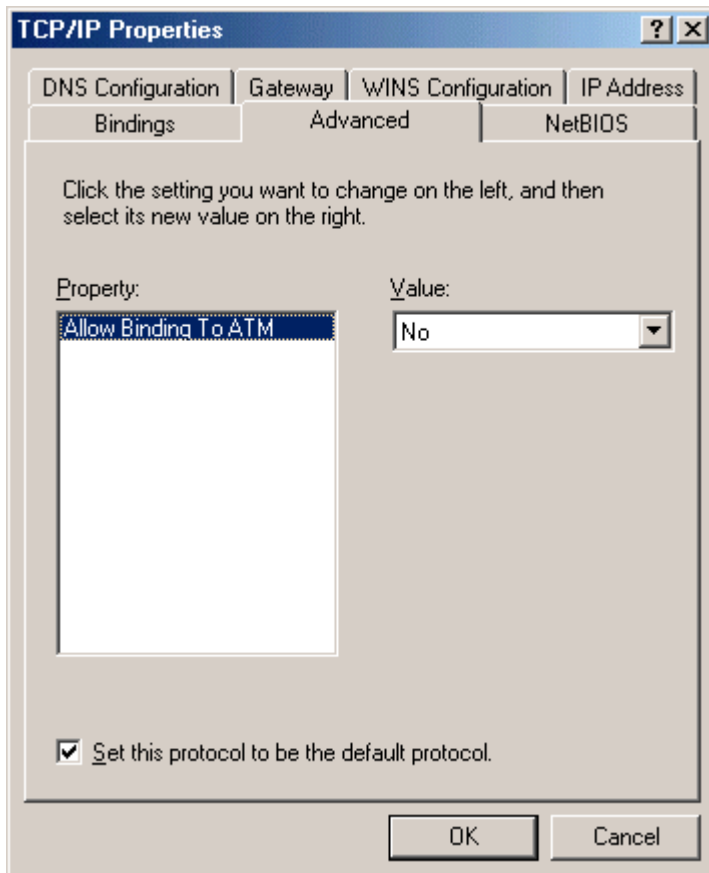
8. On the DNS Configuration tab, confirm **Disable DNS** is checked.



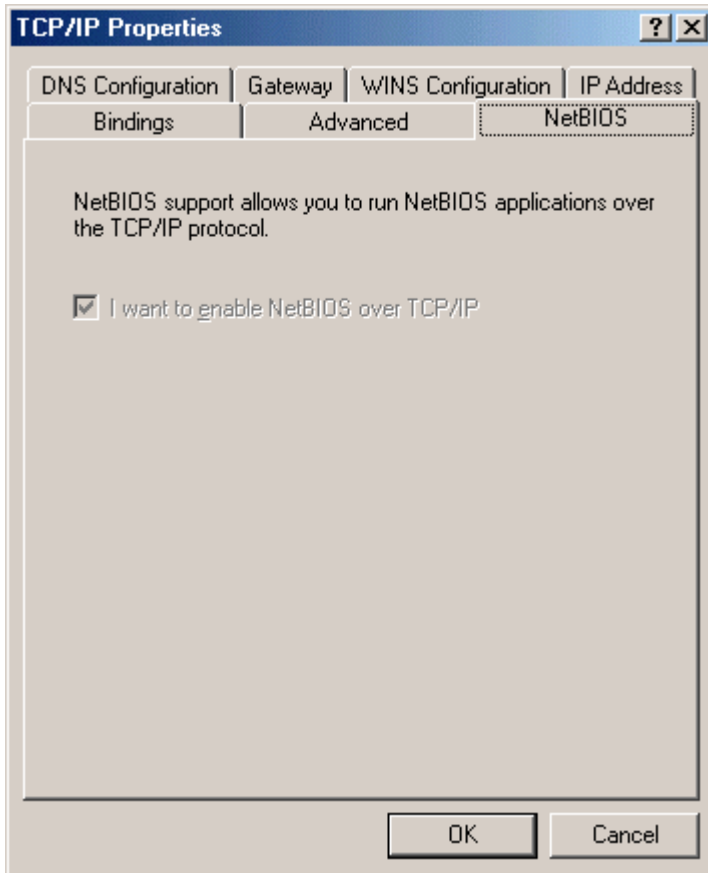
9. Select the **Bindings** tab. Confirm your settings.



10. Select the **Advanced** tab. Confirm your settings.



11. Select the **NetBIOS** tab. Confirm your settings. Then, select **OK** to return to the main network screen.



12. Select **OK**. When prompted to restart, select **Yes**.

