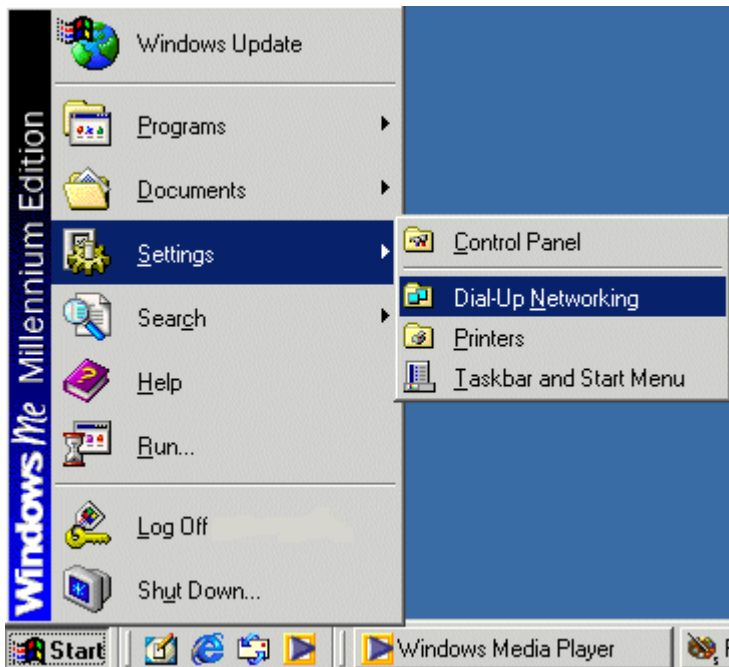


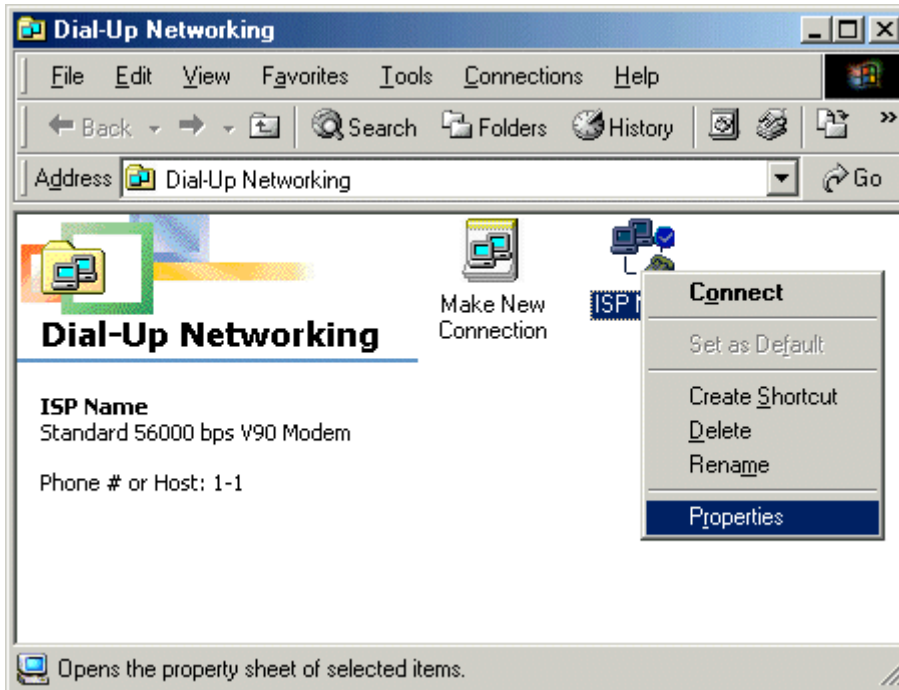
Windows® ME – Dial-Up Support

How to Connect Automatically

1. Select **Start**. Select **Settings**. Then, select **Dial-Up Networking** from the options from the right.



2. Right-click on the **Dial-up** icon. Select **Properties**.



3. Select the **Security** tab. Uncheck **Connect automatically**. Select **OK** to exit.

The image shows a Windows-style dialog box titled "ISP Name" with a help icon and a close button in the title bar. The dialog has several tabs: "General", "Networking", "Security", "Scripting", "Multilink", and "Dialing". The "Security" tab is selected. Inside the dialog, there is a section for "Authentication:" containing three text input fields labeled "User name:", "Password:", and "Domain:". Below these fields is a checkbox labeled "Connect automatically" which is currently unchecked. There is also a section for "Advanced security options:" containing three checkboxes: "Log on to network", "Require encrypted password", and "Require data encryption", all of which are unchecked. At the bottom of the dialog are two buttons: "OK" and "Cancel".