

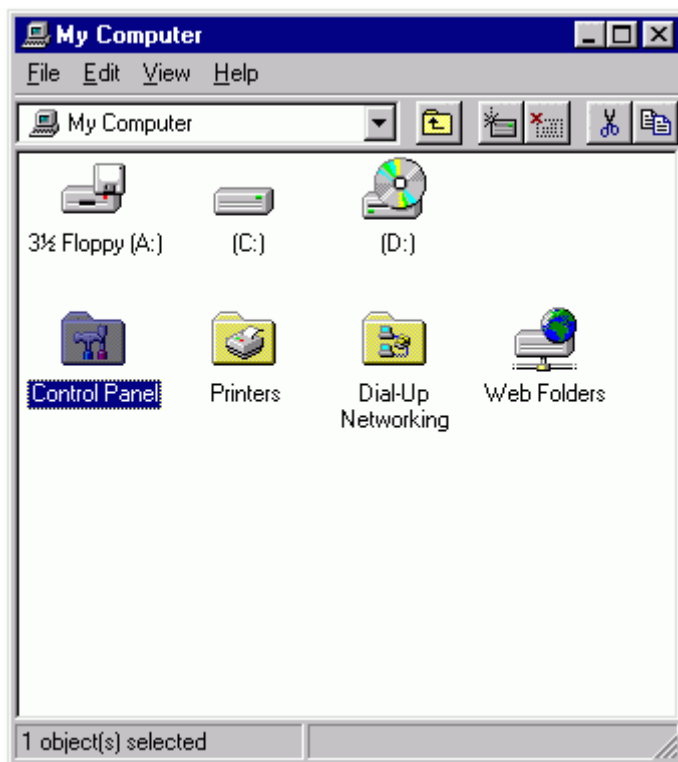
Windows® 98 – Network Support

How to View Network Settings

1. Double-click on **My Computer**.



2. Double-click on **Control Panel**.

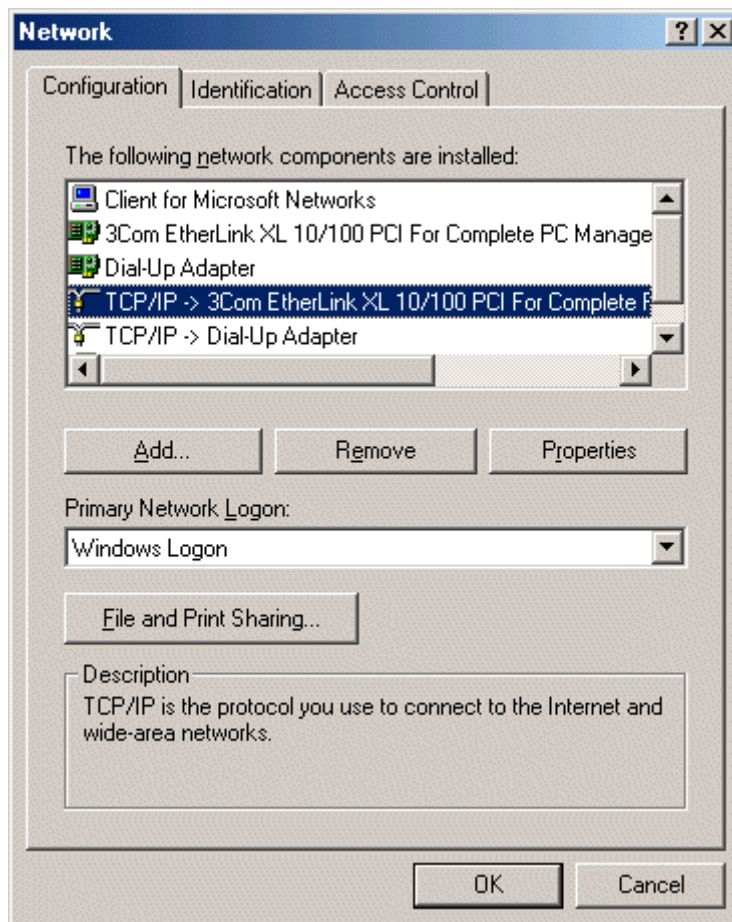


3. Double-click on **Network**.

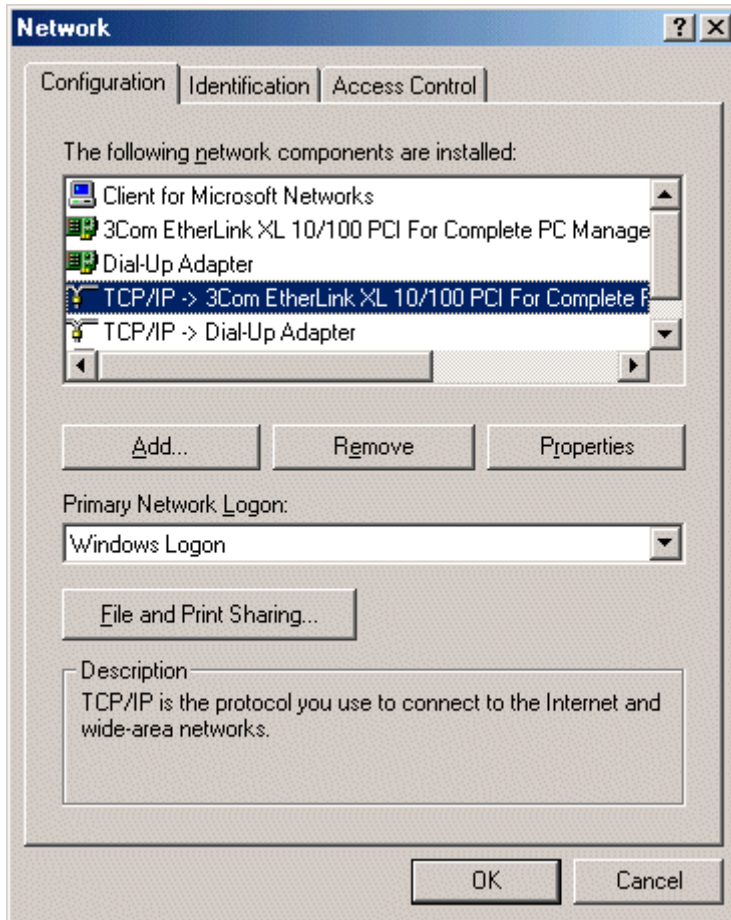


4. In the window that pops up, these components might appear:

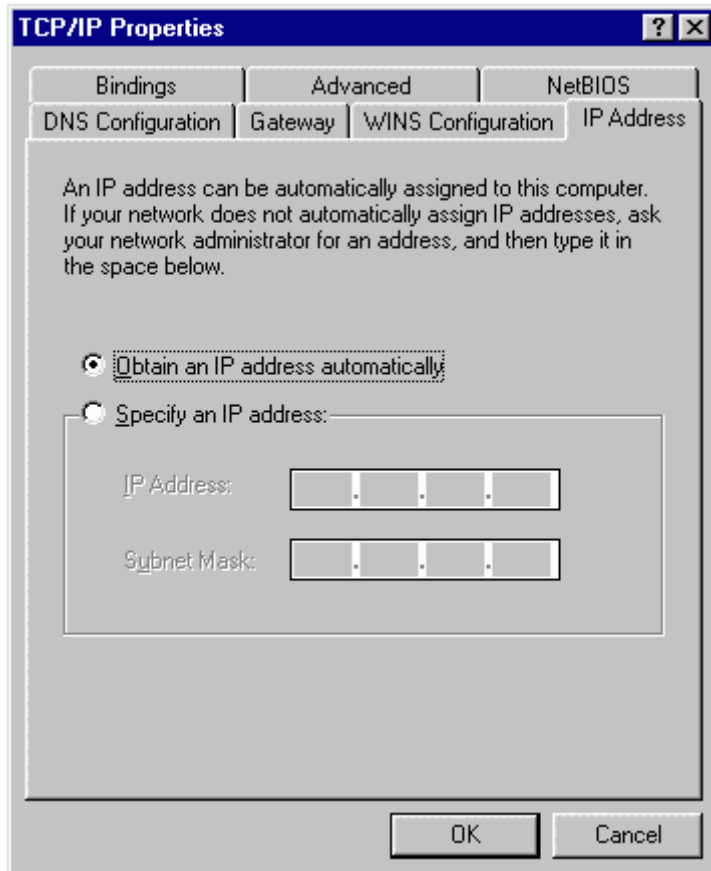
- Client for Microsoft Networks
- Windows Family Logon
- Dial-Up Adapter (only needed if you have a modem)
- Ethernet Adapter (name will vary)
- TCP/IP (it may be called TCP/IP > Dial-Up Adapter and/or TCP/IP > Ethernet Adapter)



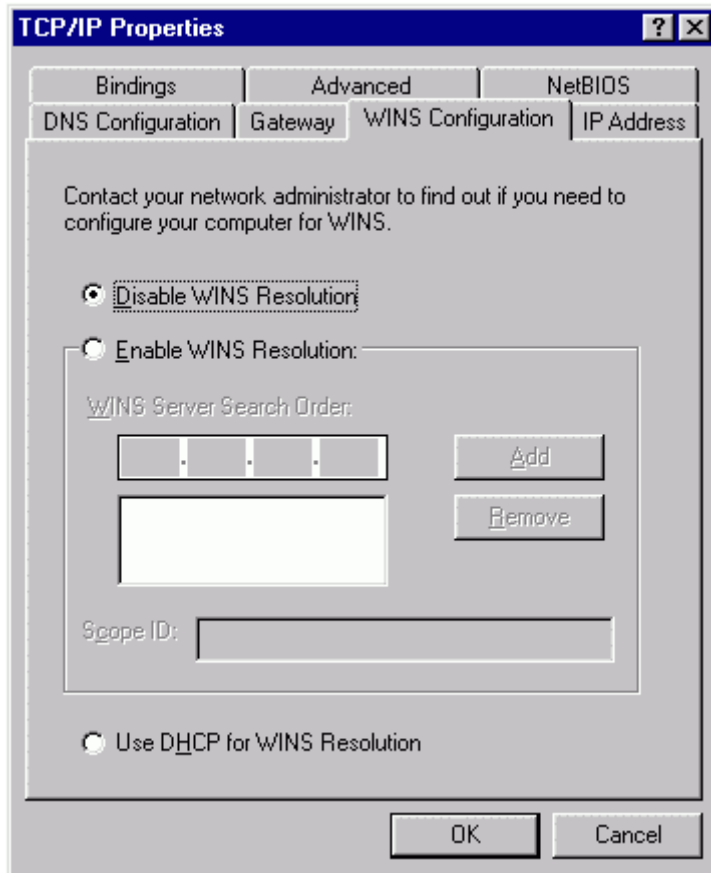
5. Select **TCP/IP for the Ethernet card** (it should be highlighted). Then, select the **Properties** button.



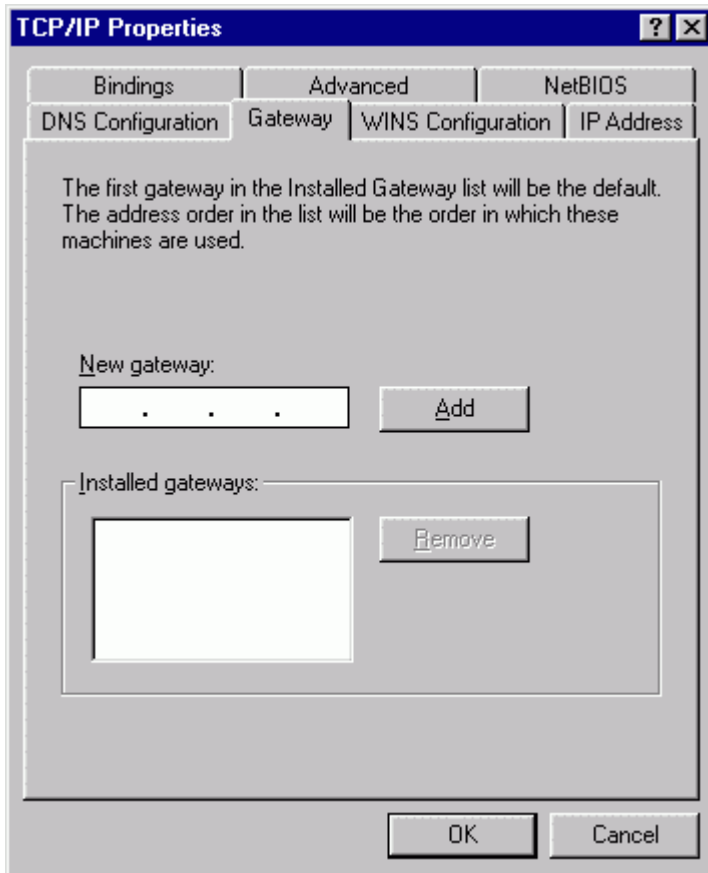
6. Confirm **Obtain an IP address automatically** is checked. Then, select the **WINS Configuration** tab.



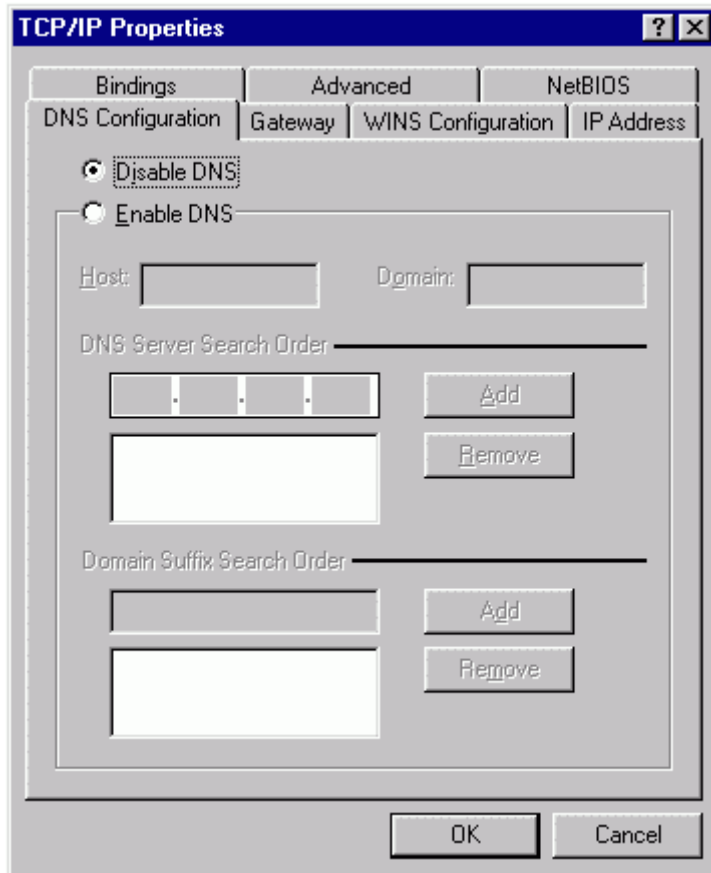
7. Select **Disable WINS Resolution**. Select the **Gateway** tab.



8. The "Installed Gateways" box should be empty. If a number is listed there, select it (so it's highlighted), and then select the **Remove** button. After you've made all your changes, select the **DNS Configuration** tab.



9. Confirm that **Disable DNS** is checked. Then, select **OK**.



10. You'll return to the first Network window. Select **OK**. When prompted to restart, select **Yes**.

