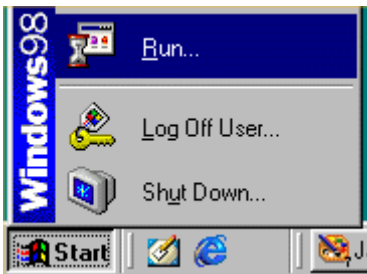


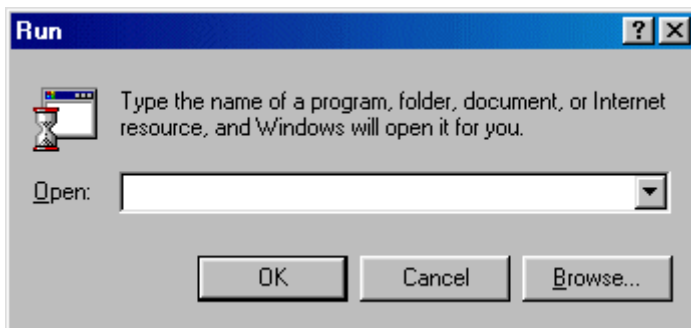
## Windows® 98 – Network Support

### How to Use Windows IP Configuration (winipcfg)

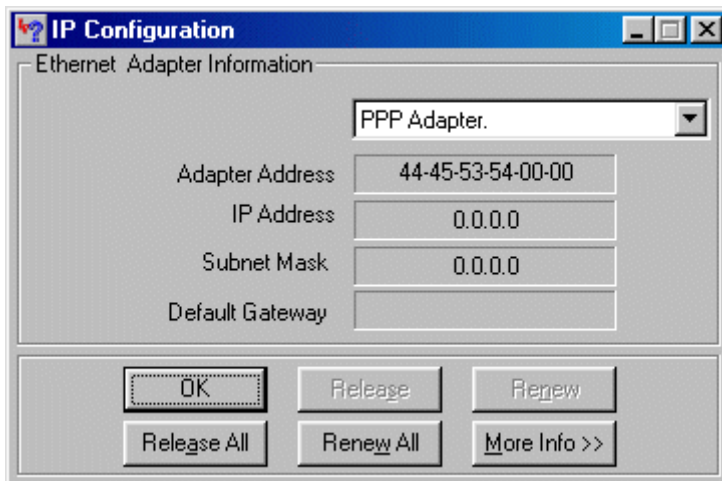
1. Select **Start**. Select **Run**.



2. Type **winipcfg**. Select **OK**.



3. Select the drop-down arrow on the **PPP Adapter** box. Then, select the **network (Ethernet) adapter** that's in your computer.



4. Your screen should display the IP Address and other information for that network card. If you're using a DHCP server to get your IP address, select **Release All** to drop the IP. Then select **Renew All** to renew the IP address. Select **OK** to exit.

