

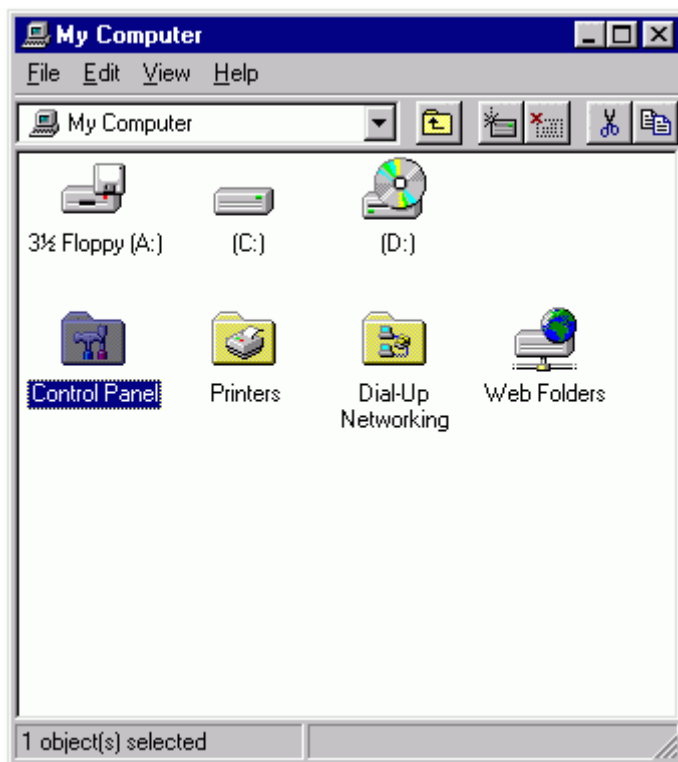
## Windows® 95 – Network Support

### How to Add/Remove a Static IP Address in TCP/IP

1. Double-click on **My Computer**.



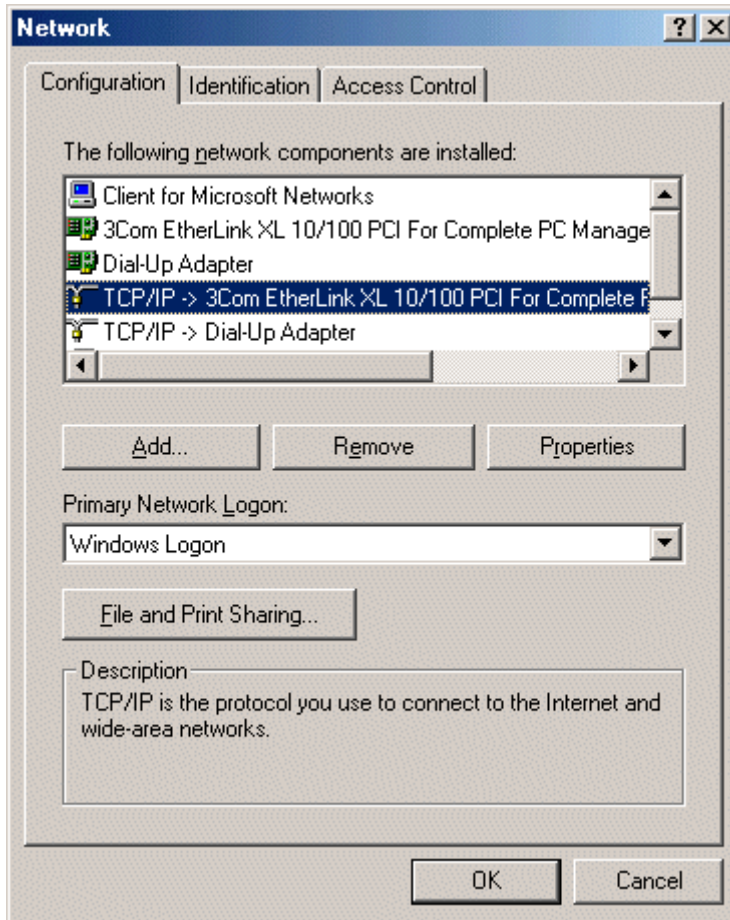
2. Double-click on **Control Panel**.



3. Double-click on **Network**.

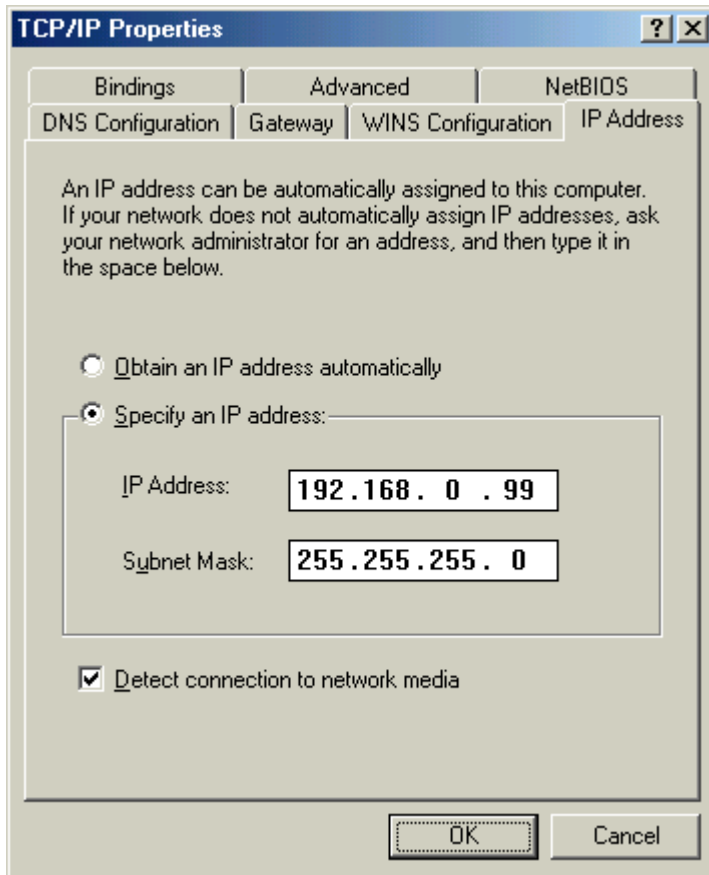


4. Select **TCP/IP for the Ethernet** card. Then, select the **Properties** button.

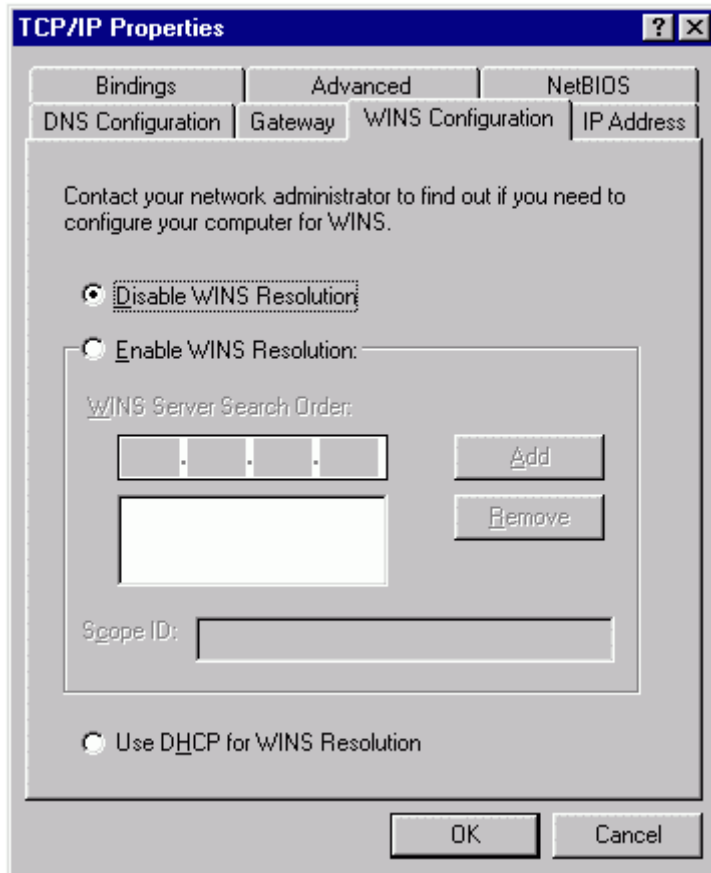


5. Select **Specify an IP address**. Type the addresses for **static IP** and **Subnet mask**. To remove a static IP address, select **Obtain an IP address automatically**. Next, select the **WINS Configuration** tab.

**NOTE:** This picture is just an example. To recover an Actiontec® modem, change the IP address to match the settings that appear in the picture below.

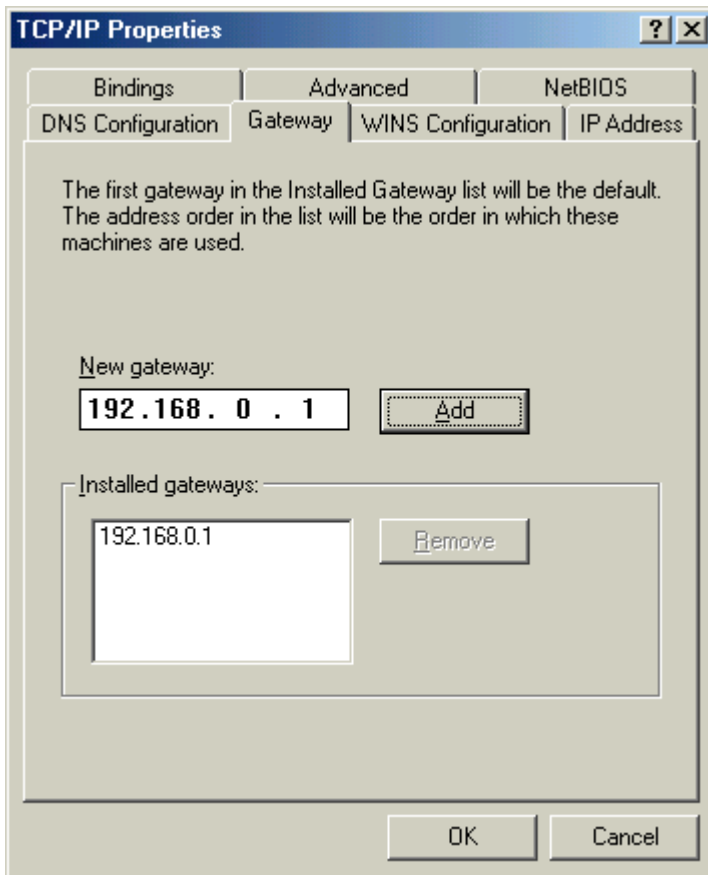


6. Confirm that **Disable WINS Resolution** is checked. Select the **Gateway** tab.

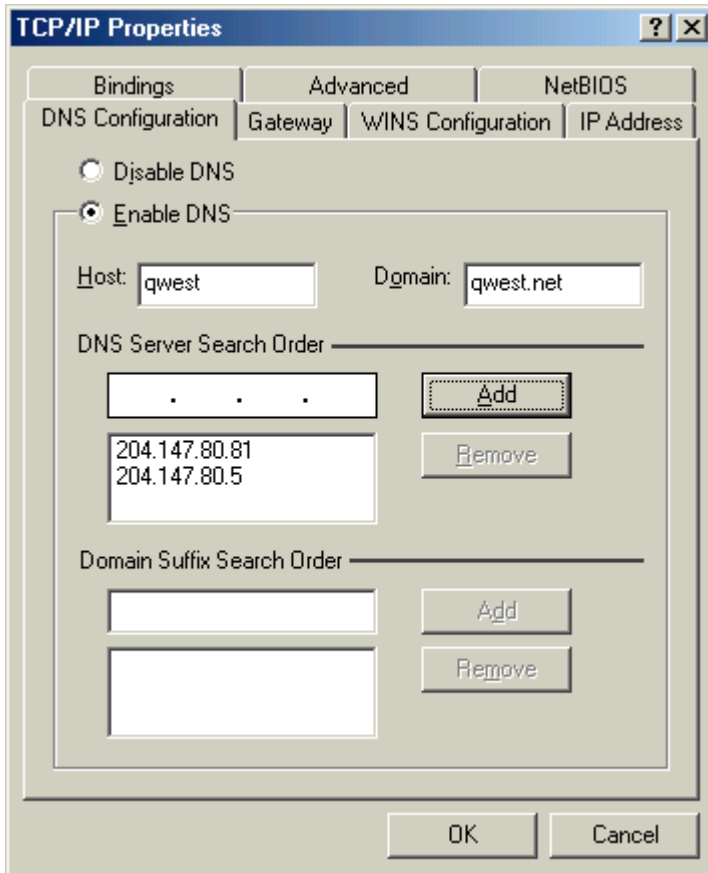


7. Type the **Gateway IP address**. Select **Add**. To use static IPs, the **Installed gateways** box should be blank. Select the **DNS Configuration** tab.

**NOTE:** The picture below is just an example.



- To use a static IP, select **Enable DNS**. If not, select **Disable DNS**. Type a host name and domain name (you choose the names). Type the first **DNS IP address**. Select **Add**. Do the same for the second DNS IP address. Select **OK**.



9. The first Network window will appear. Select **OK**. When prompted to restart, select **Yes**.

