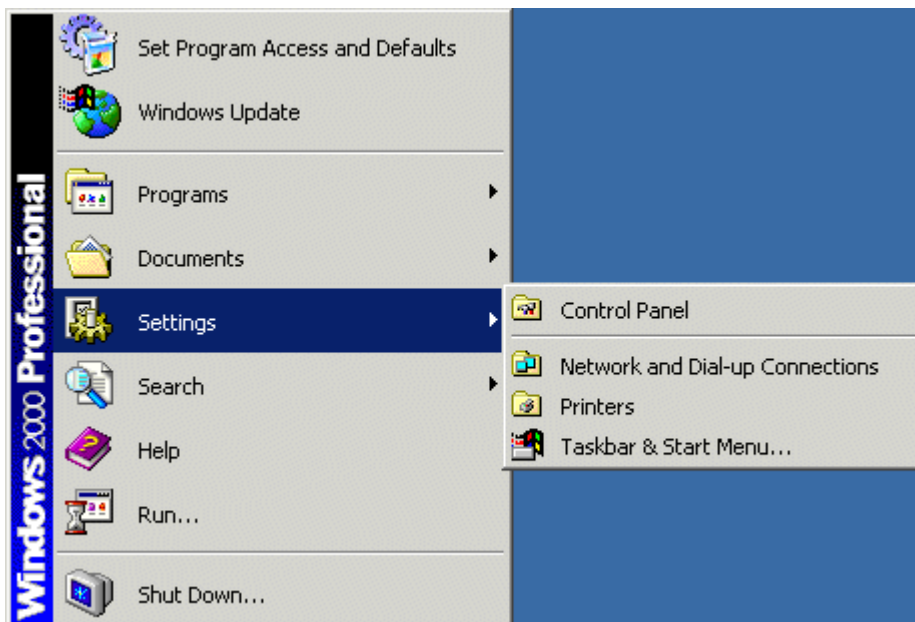


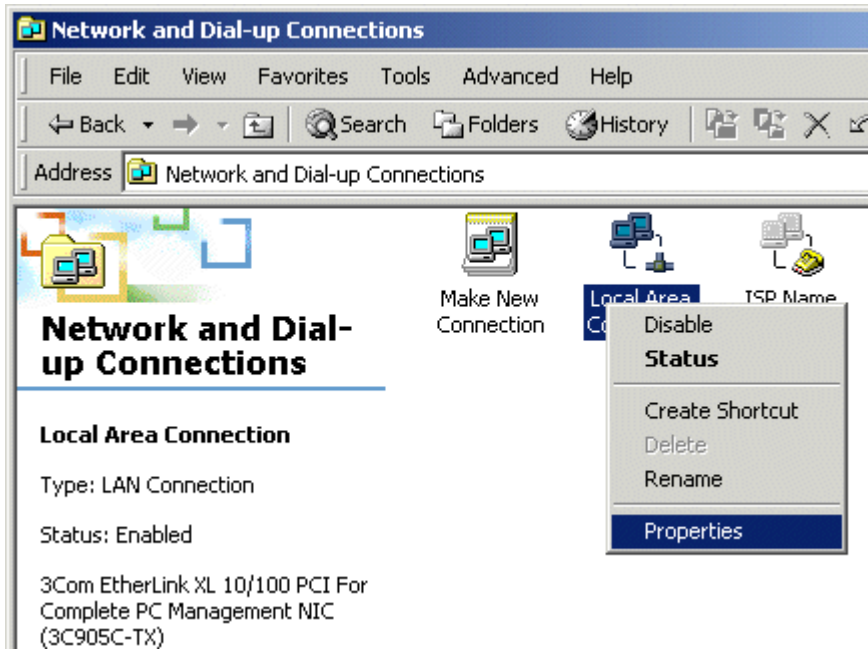
Windows® 2000 – Network Support

How to View Basic Network Settings

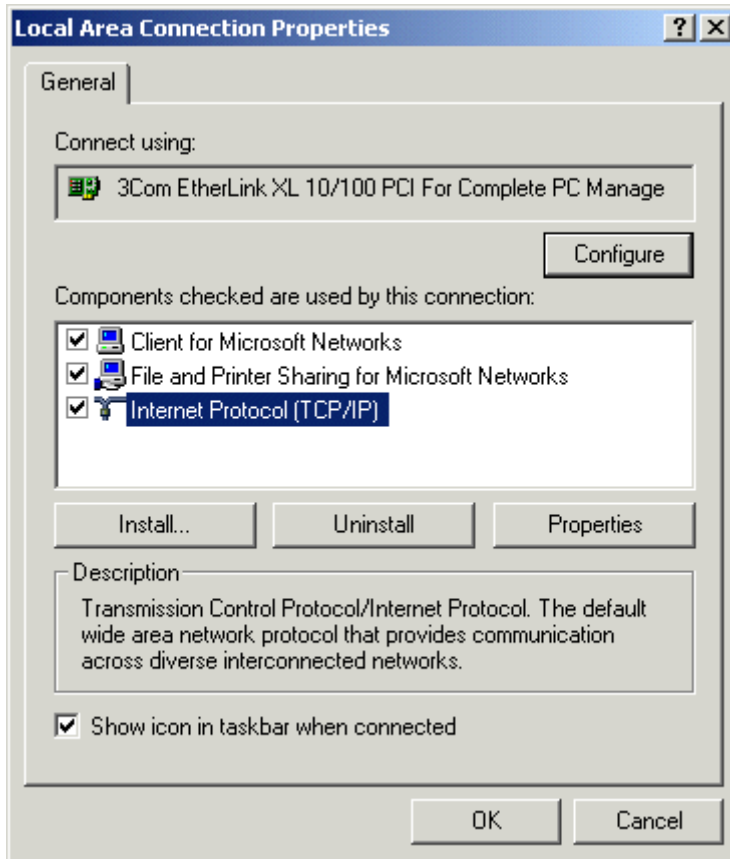
1. Select **Start**. Select **Settings**. Then, select **Network and Dial-up Connections** from the options on the right.



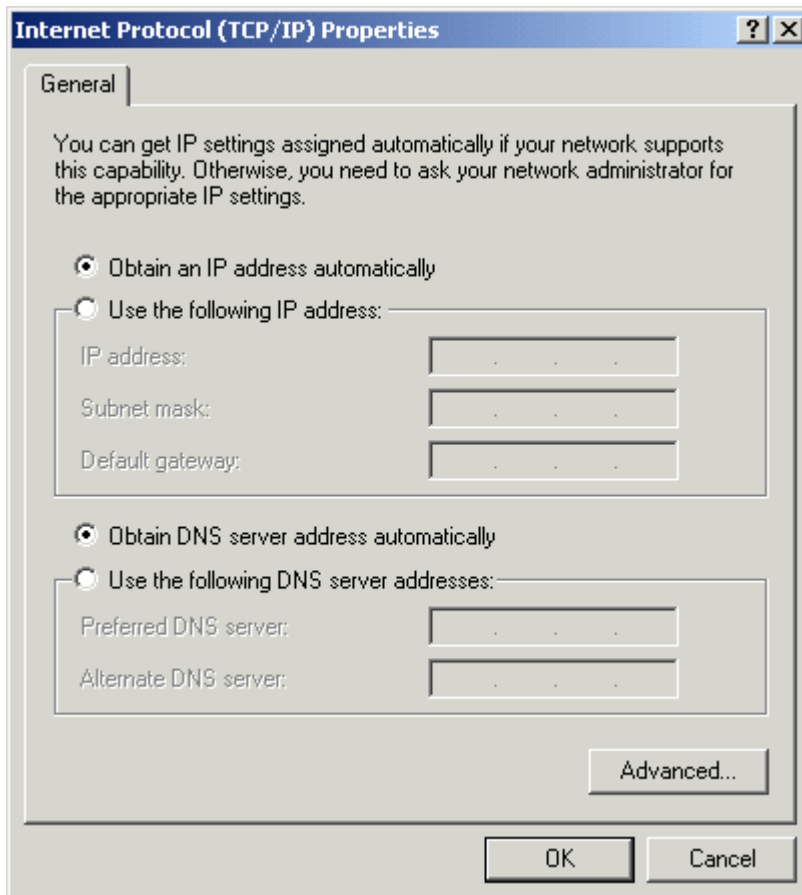
2. Right-click on **Local Area Connection**. Select **Properties**.



3. Select **Internet Protocol (TCP/IP)**. Then, select the **Properties** button.



4. TCP/IP, by default, is set to "Obtain an IP address automatically" and "Obtain DNS server address automatically." If you don't need static IPs, select **OK**.



5. Select **OK**. You'll return to the Control Panel.

