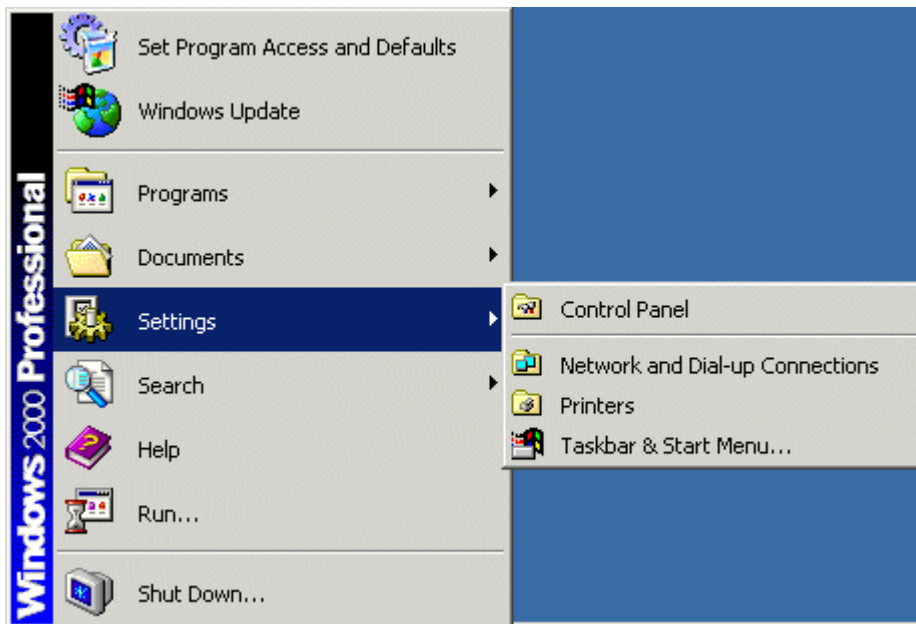


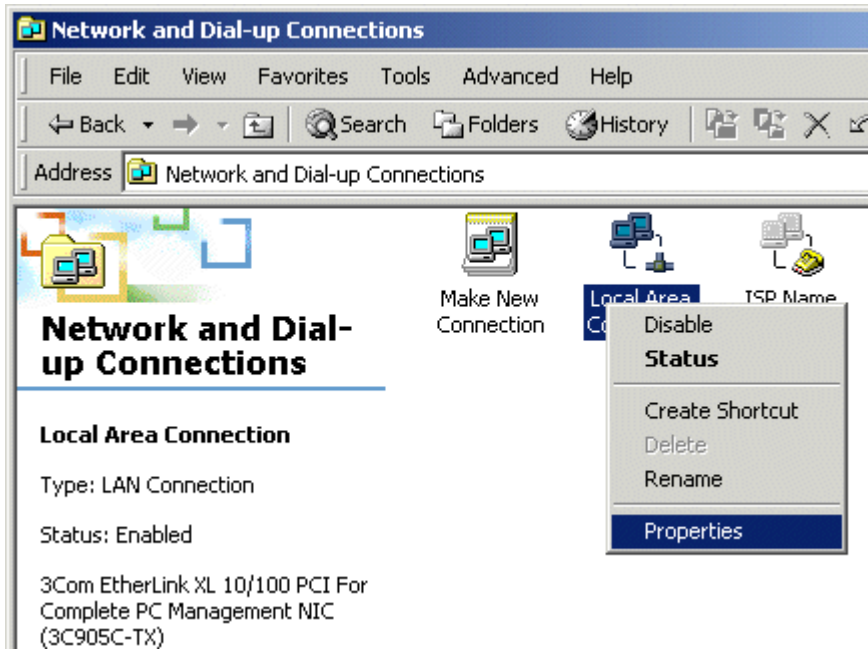
## Windows® 2000 – Network Support

### How to View Advanced Network Settings

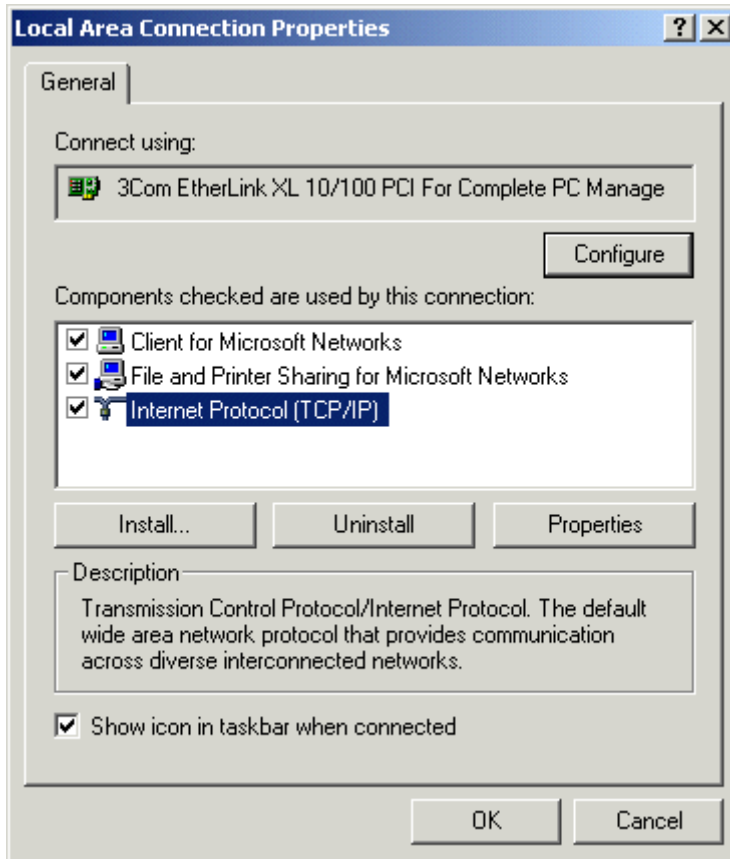
1. Select **Start**. Select **Settings**. Then, select **Network and Dial-up Connections** from the options on the right.



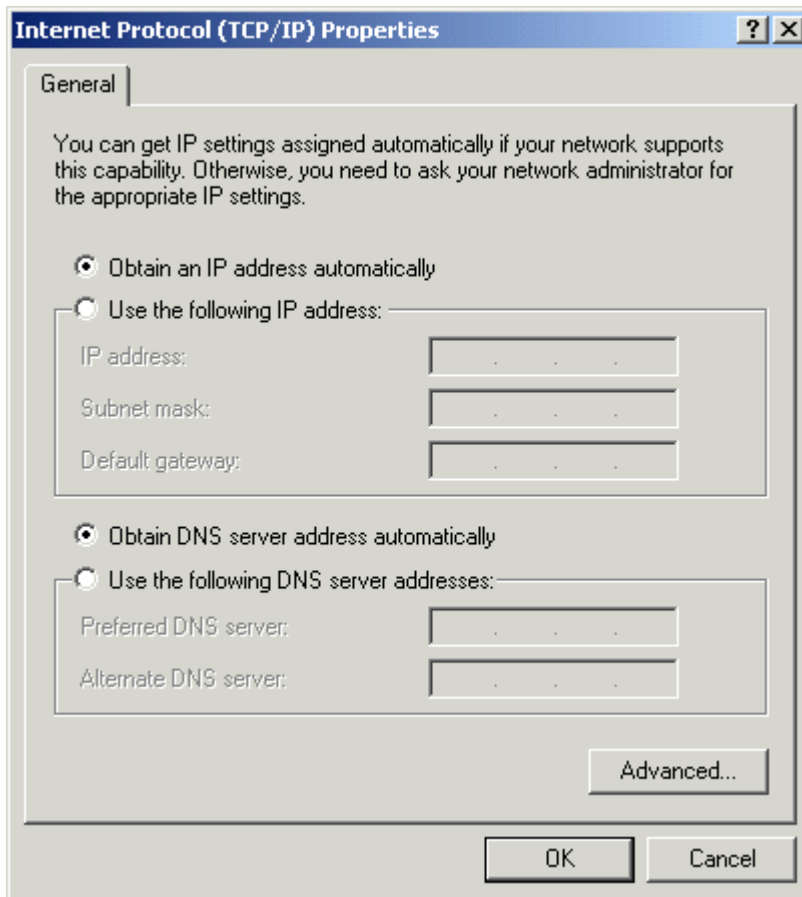
2. Right-click on **Local Area Connection**. Select **Properties**.



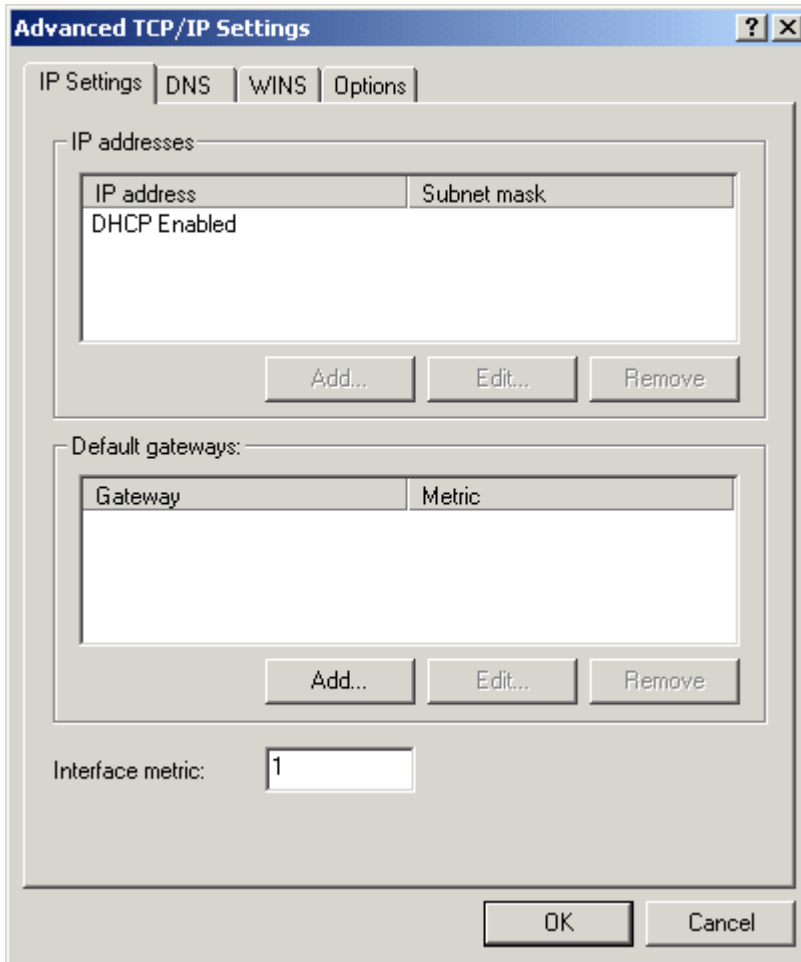
3. Select **Internet Protocol (TCP/IP)**. Select the **Properties** button.



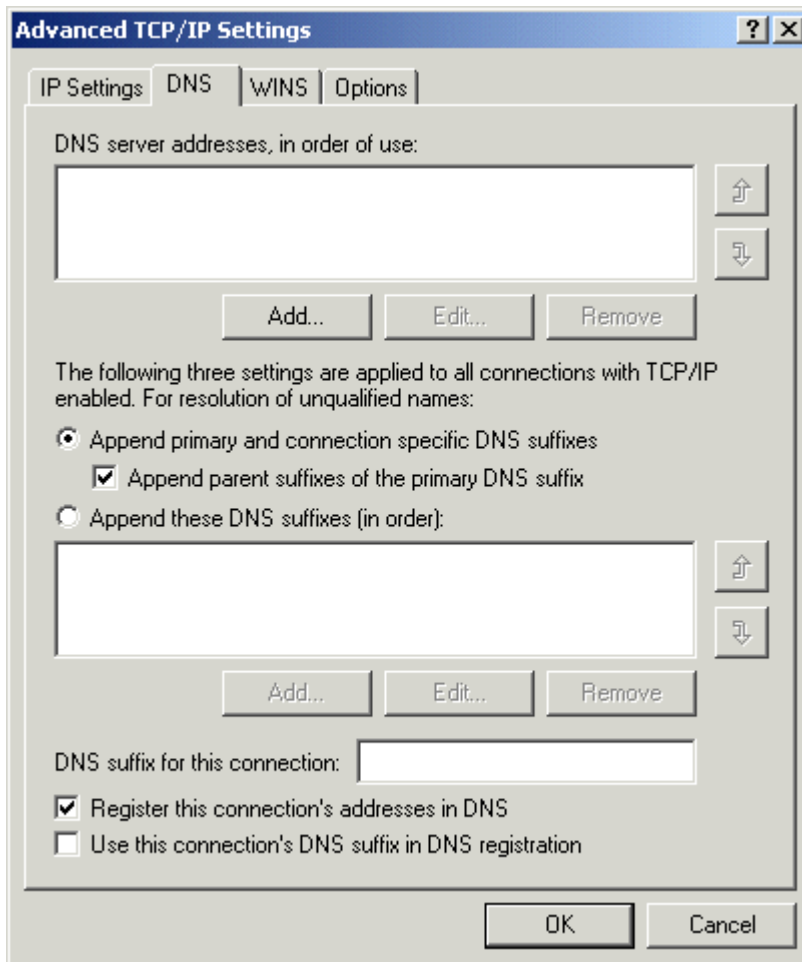
4. TCP/IP, by default, is set to "Obtain an IP address automatically" and "Obtain DNS server address automatically". Select the **Advanced** button to view the advanced TCP/IP settings.



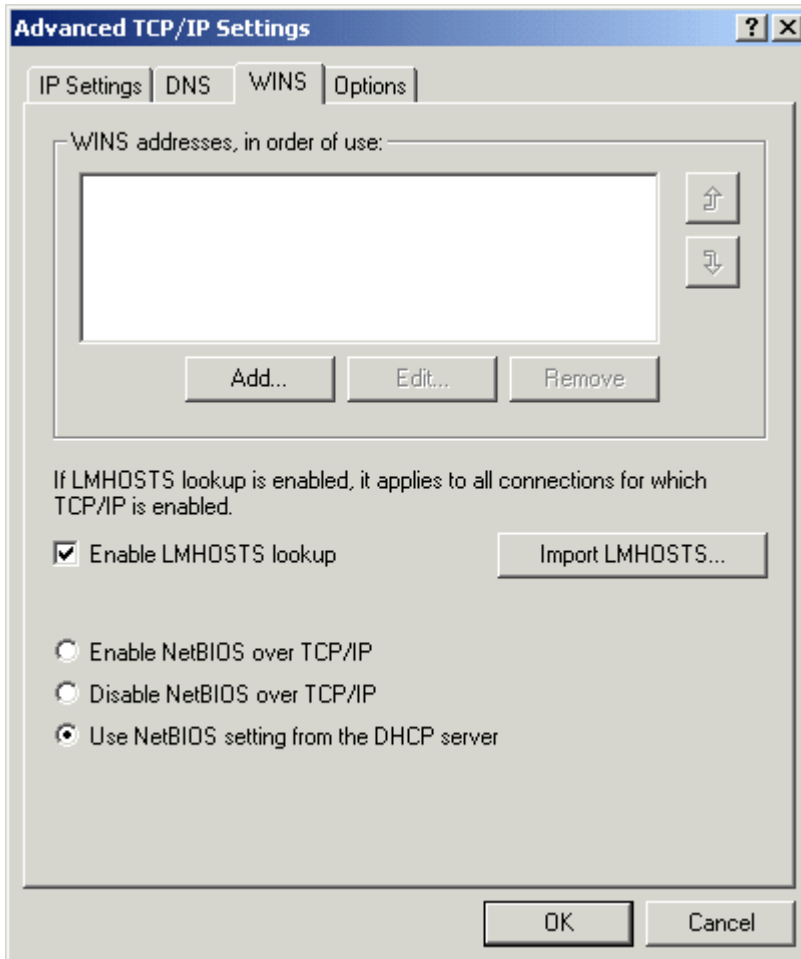
5. If TCP/IP is setup to obtain an IP address automatically, the screen will look like this.



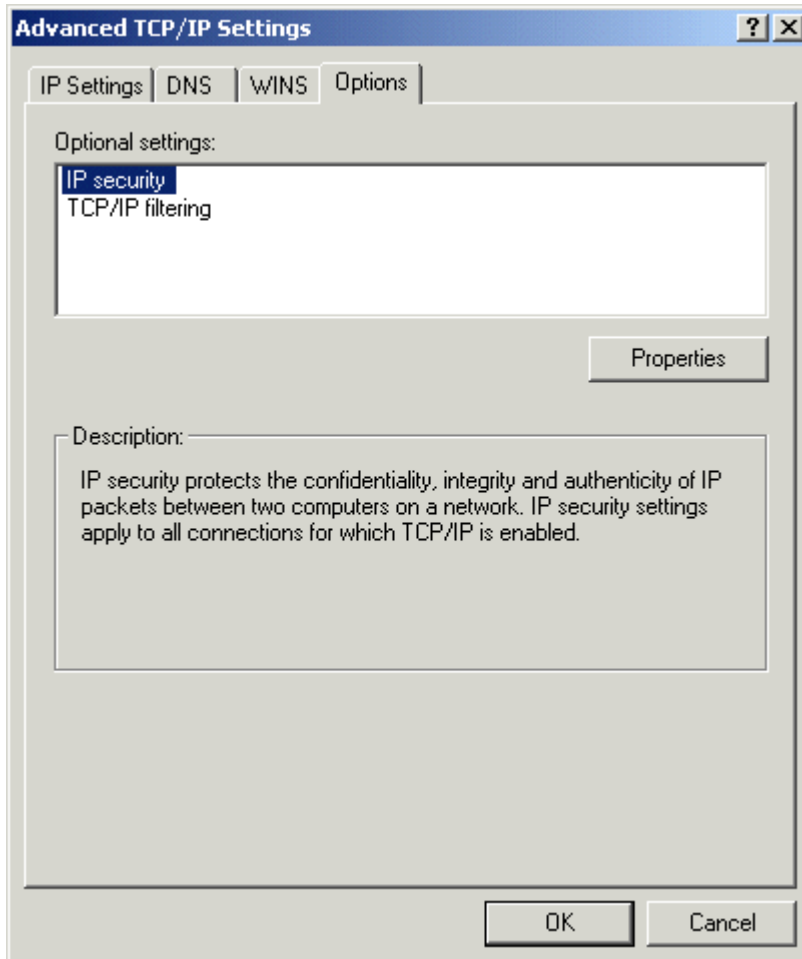
6. Select the **DNS** tab. If TCP/IP is setup to obtain an IP address as well as DNS automatically, the screen will look like this.



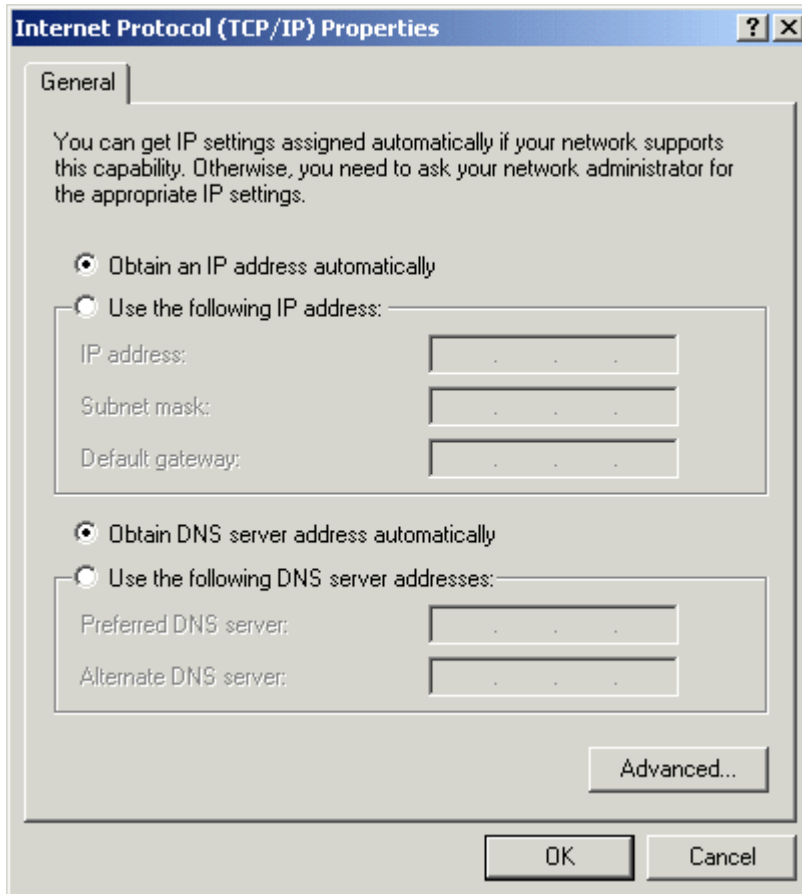
7. Select the **WINS** tab.



8. Select the **Options** tab.



9. Select **OK** to return to the TCP/IP properties screen.



10. Select **OK**. Select **OK** again on the next screen to exit. Any changes will be saved. You may need to restart for your changes to take effect.