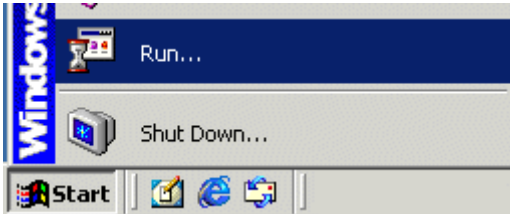


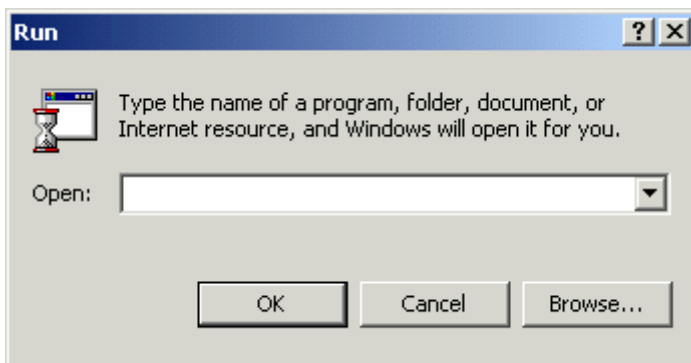
Windows® 2000 – Network Support

How to Use Windows IP Configuration (ipconfig)

1. Select **Start**. Select **Run**.



2. Type **cmd**. Select **OK**.



3. At the blinking cursor, type **ipconfig**. Select **Enter**. This will list the IP Address for your network (Ethernet) card and/or dial-up connection.

```
C:\>ipconfig

Windows IP Configuration

Ethernet adapter Local Area Connection:

    Connection-specific DNS Suffix  . :
    IP Address. . . . . : 192.168.0.6
    Subnet Mask . . . . . : 255.255.255.0
    Default Gateway . . . . . : 192.168.0.1

C:\>
```

4. To refresh your IP address, type **ipconfig /release**. Select **Enter**. If successful, you'll see this screen.

```
C:\>ipconfig /release

Windows IP Configuration

Ethernet adapter Local Area Connection:

    Connection-specific DNS Suffix  . :
    IP Address. . . . . : 0.0.0.0
    Subnet Mask . . . . . : 0.0.0.0
    Default Gateway . . . . . :

C:\>
```

5. Now type **ipconfig /renew**. Select **Enter**. This will renew your IP address. If successful, you'll see this screen.

```
C:\>ipconfig /renew

Windows IP Configuration

Ethernet adapter Local Area Connection:

    Connection-specific DNS Suffix  . :
    IP Address. . . . . : 192.168.0.6
    Subnet Mask . . . . . : 255.255.255.0
    Default Gateway . . . . . : 192.168.0.1

C:\>
```

Then, type **exit** and select **Enter**, or select the X in the top-right corner to close the window.

- You can also type **ipconfig /all** to see what DNS servers the computer is using.

```
C:\>ipconfig /all

Windows IP Configuration

    Host Name . . . . . : HomePC
    Primary Dns Suffix . . . . . :
    Node Type . . . . . : Hybrid
    IP Routing Enabled. . . . . : No
    WINS Proxy Enabled. . . . . : No

Ethernet adapter Local Area Connection:

    Connection-specific DNS Suffix . :
    Description . . . . . : 3Com EtherLink XL 10/100 PCI For Complete PC Management NIC
    (3C905C-TX)
    Physical Address. . . . . : 00-01-02-66-7C-55
    Dhcp Enabled. . . . . : Yes
    Autoconfiguration Enabled . . . . : Yes
    IP Address. . . . . : 192.168.0.6
    Subnet Mask . . . . . : 255.255.255.0
    Default Gateway . . . . . : 192.168.0.1
    DHCP Server . . . . . : 192.168.0.5
    DNS Servers . . . . . : 192.168.0.5
    Primary WINS Server . . . . . : 192.168.0.5
    Lease Obtained. . . . . : Monday, November 17, 2003 2:35:16 PM

    Lease Expires . . . . . : Tuesday, November 18, 2003 2:35:16 AM

C:\>
```

- Type **Exit** to close the window.