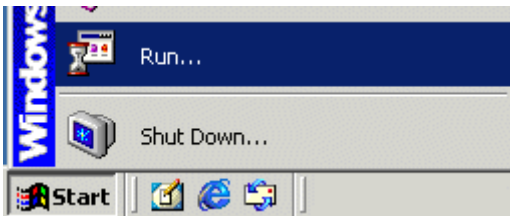


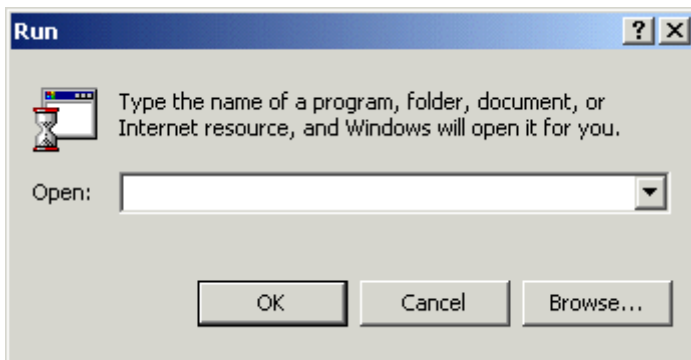
## Windows® 2000 – Network Support

### How to Use Traceroute

1. Select **Start**. Select **Run**.



2. Type **cmd**. Select **OK**.





3. At the blinking cursor, type **tracert** and the domain name or IP address you want to trace. Select **Enter**.

```
C:\Documents and Settings>tracert www.qwest.com

Tracing route to qwest.com [155.70.40.50]
over a maximum of 30 hops:

  1  <1 ms  <1 ms  <1 ms  192.168.0.1 [192.168.0.1]
  2  45 ms  32 ms  31 ms  67-41-35-254.bois.qwest.net [67.41.35.254]
  3  40 ms  32 ms  50 ms  bois-agw1.inet.qwest.net [67.41.42.29]
  4  31 ms  31 ms  31 ms  bse-core-02.inet.qwest.net [207.108.224.202]
  5  53 ms  44 ms  44 ms  tkw-core-01.inet.qwest.net [205.171.205.150]
  6  52 ms  44 ms  46 ms  tkw-core-03.inet.qwest.net [205.171.190.6]
  7  74 ms  75 ms  78 ms  svl-core-02.inet.qwest.net [205.171.205.110]
  8  76 ms  76 ms  74 ms  sjp-brdr-01.inet.qwest.net [205.171.214.46]
  9  77 ms  77 ms  77 ms  so-2-0-0.edge1.SanJose1.Level3.net [209.245.146.229]
 10 83 ms  75 ms  75 ms  so-5-0-0.gar1.SanJose1.Level3.net [209.244.3.137]
 11 83 ms  76 ms  74 ms  ge-9-0.ipcolo3.SanJose1.Level3.net [64.159.2.9]
 12 185 ms 230 ms 227 ms unknown.Level3.net [64.152.69.30]
 13 77 ms  78 ms  75 ms  w17.www.scd.yahoo.com [155.70.40.50]

Trace complete.

C:\Documents and Settings>
```

4. Type **exit** at the prompt to return to Windows.