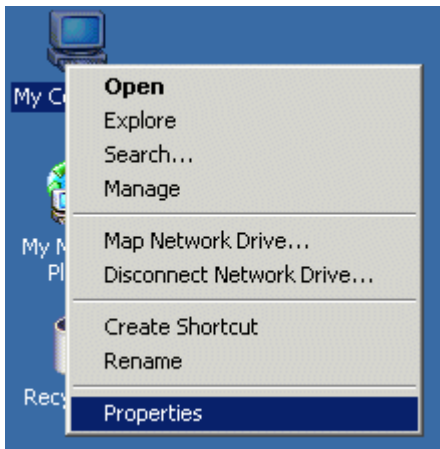


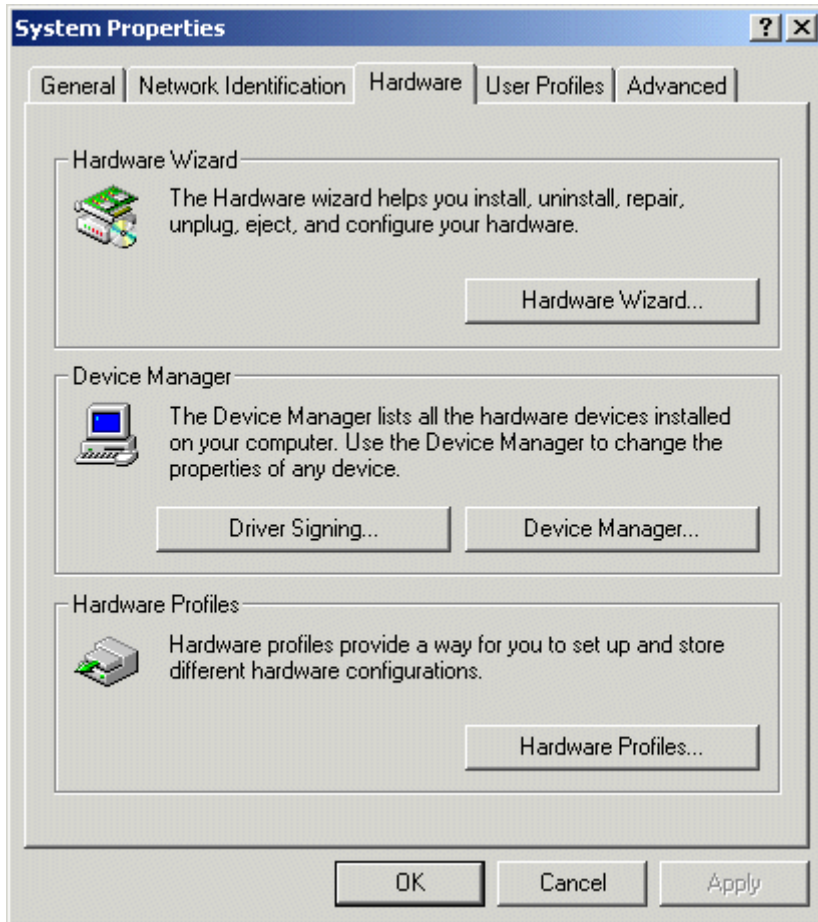
Windows® 2000 – Network Support

How to Enable/Disable a Network Interface Card (NIC)

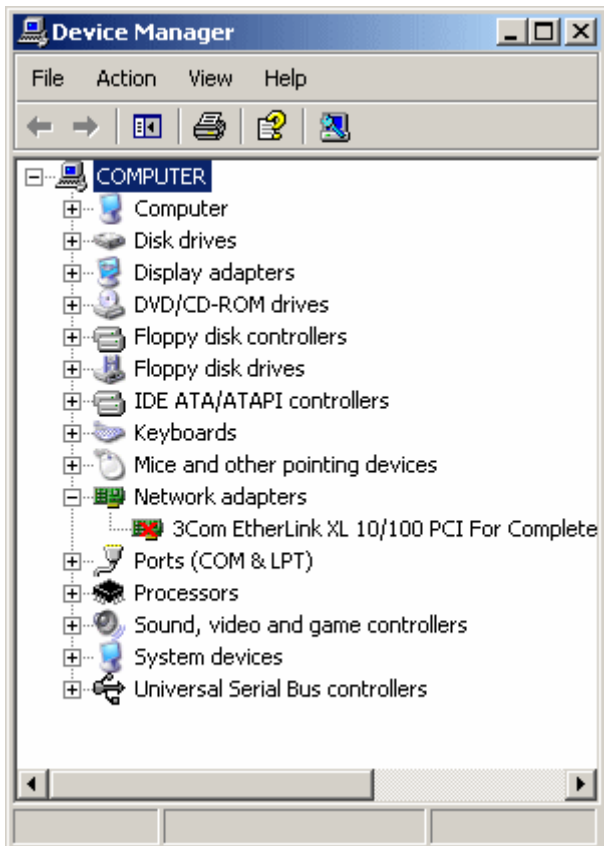
1. Right-click on **My Computer** or in the Start menu. Select **Properties**.



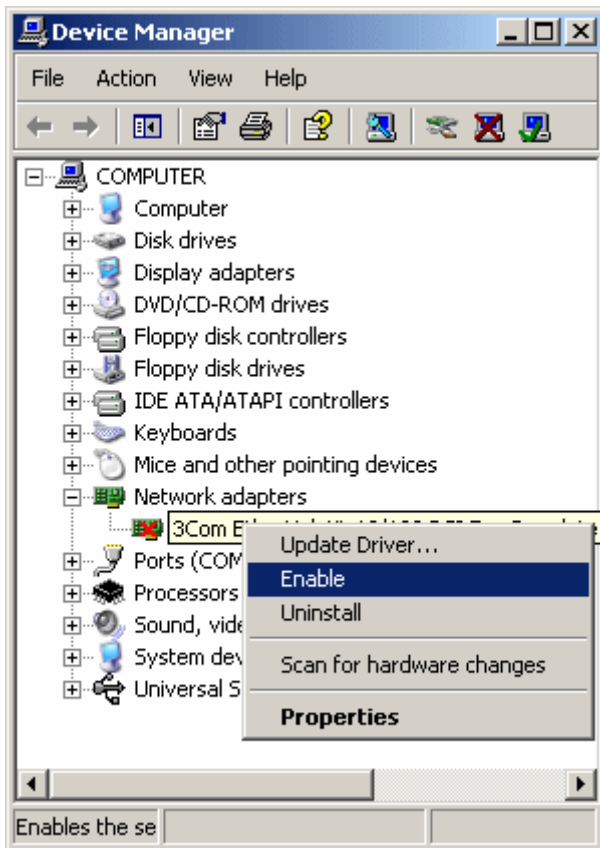
2. Select the **Hardware** tab. Then, select the **Device Manager** button.



3. The Device Manager lists every driver on your computer. Select the **+ sign** next to “Network adapters.” If the Ethernet card is disabled, you’ll see a red X on the green card.



4. To enable the device, right-click on the **green card**. Select **Enable**.



5. Now the card is enabled. Close the Device Manager.

