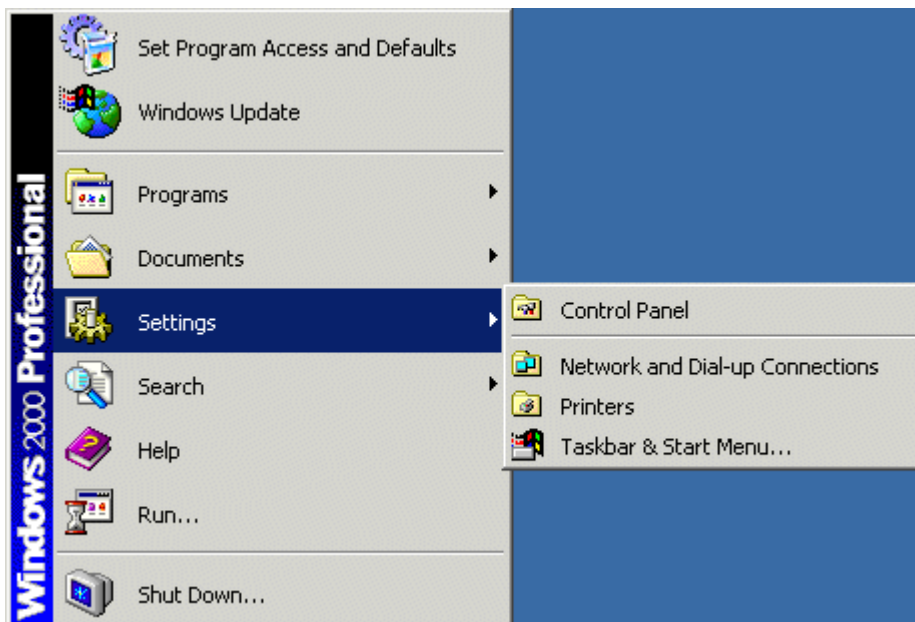


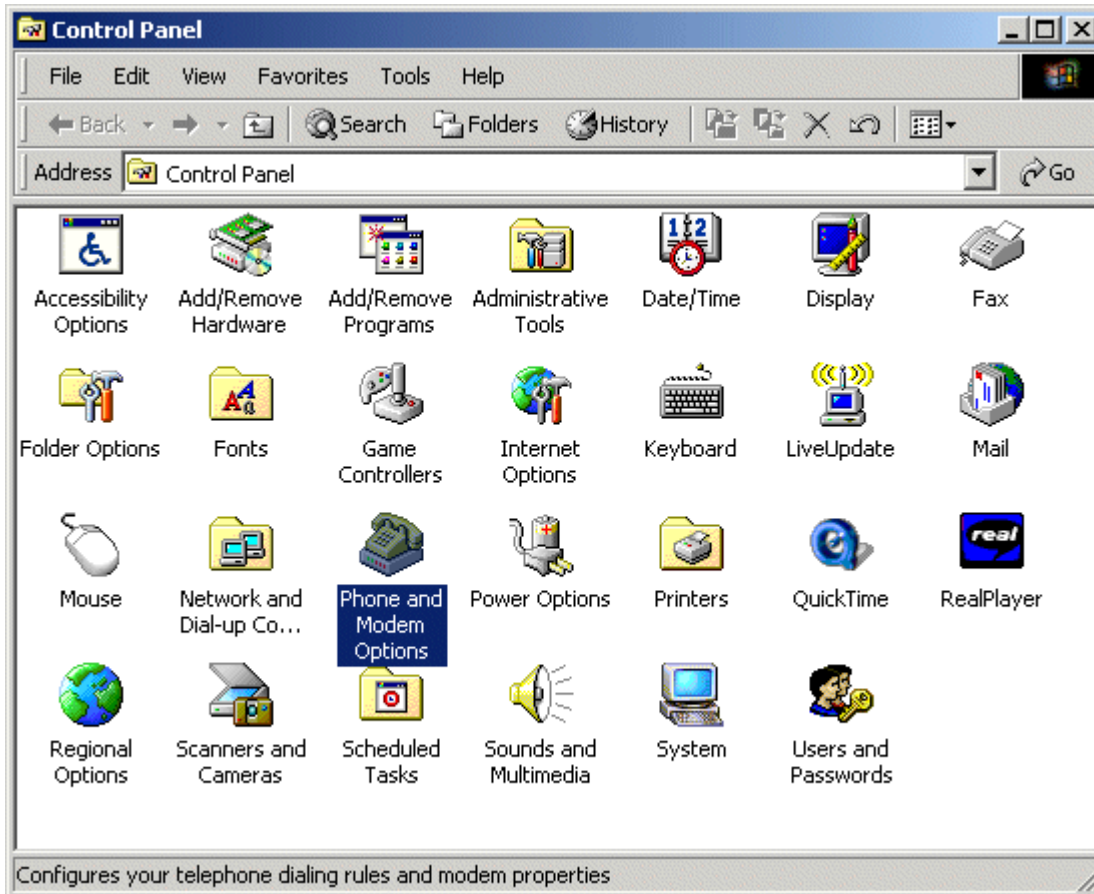
Windows® 2000 – Dial-Up Support

How to View Modem Settings

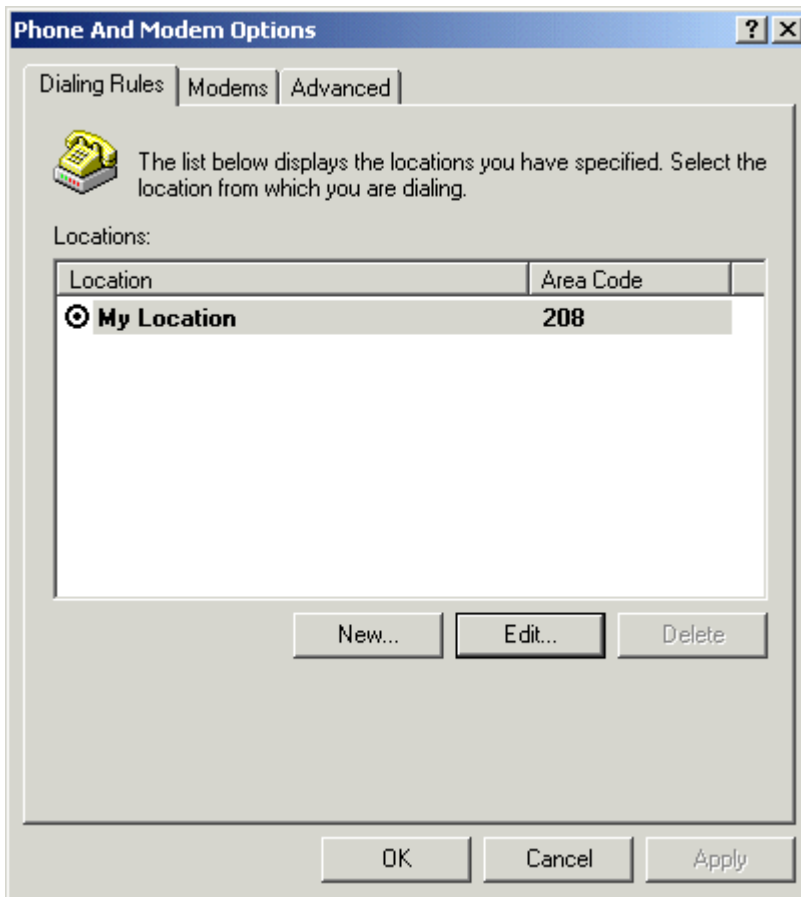
1. Select **Start**. Select **Settings**. Then, select **Control Panel** from the options on the right.



2. Double-click **Phone and Modem Options**.




3. At least one location should be listed in the white box. To configure the location properties, select the listed location and then select **Edit**.



4. On the General tab, confirm your area code appears in the Area code field. To disable call waiting, check the **To disable call waiting, dial** box. Then, in the adjacent drop-down list, select the appropriate option for your area (usually *70).

Edit Location [?] [X]

General | Area Code Rules | Calling Card

 Location name:

Specify the location from which you will be dialing.

Country/region: Area code:

Dialing rules

When dialing from this location, use the following rules:

To access an outside line for local calls, dial:

To access an outside line for long-distance calls, dial:

To disable call waiting, dial:

Dial using: Tone Pulse

OK Cancel Apply

5. Select the **Area Code Rules** tab. Make any necessary changes. Select **OK**.

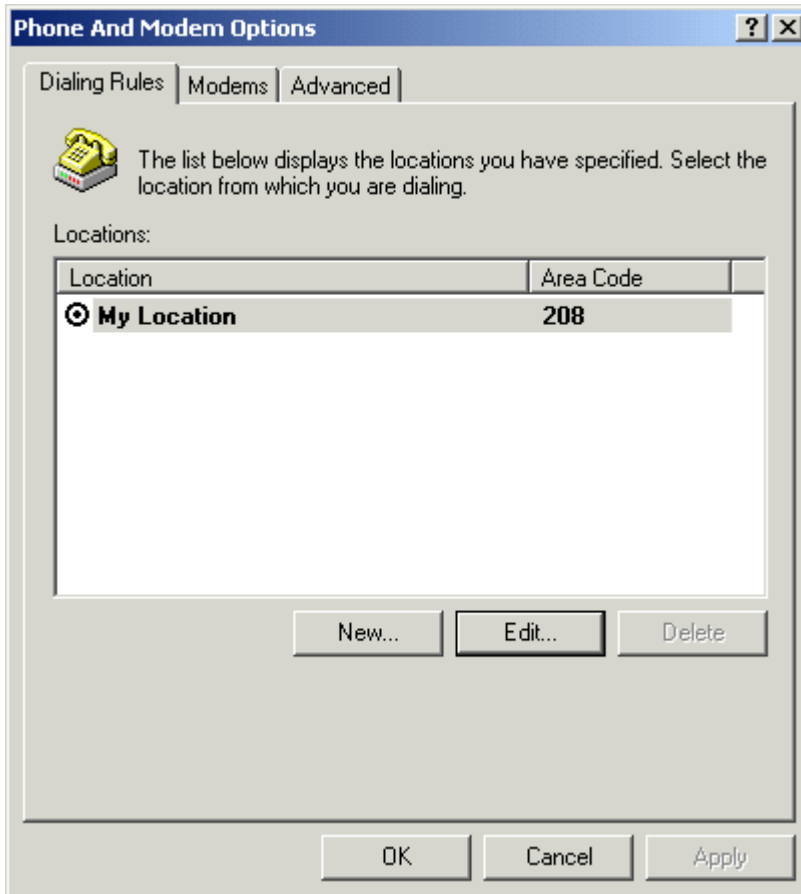
The screenshot shows a dialog box titled "Edit Location" with three tabs: "General", "Area Code Rules", and "Calling Card". The "Area Code Rules" tab is selected. The dialog contains the following text: "An area code rule determines how phone numbers are dialed from your current area code to other area codes and within your area code." Below this is the label "Area code rules:" followed by a table with three columns: "Area Code", "Prefixes", and "Rule". The table is currently empty. Below the table are three buttons: "New...", "Edit...", and "Delete". At the bottom of the dialog is a "Description" section with the text: "Select a rule in the list above to view its description, or click New to add a rule." At the very bottom of the dialog are three buttons: "OK", "Cancel", and "Apply".

Area Code	Prefixes	Rule
-----------	----------	------

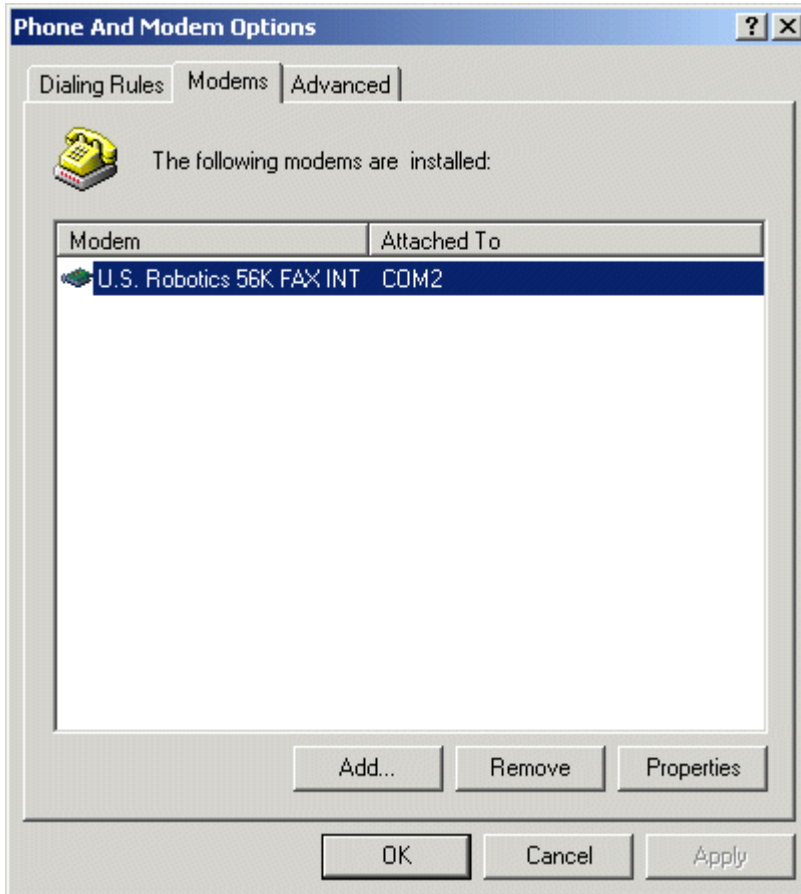
6. Select the **Calling Card** tab. Make any necessary changes. Select **OK**.

The image shows a screenshot of the 'Edit Location' dialog box, specifically the 'Calling Card' tab. The dialog has a title bar with a question mark and a close button. Below the title bar are three tabs: 'General', 'Area Code Rules', and 'Calling Card'. The 'Calling Card' tab is selected. The main area contains the instruction: 'Select the calling card you will use, or click New to add a different card.' Below this is a list of 'Card Types' with radio buttons: 'None' (selected), 'AT&T Direct Dial via 1010ATT1', 'AT&T via 1010ATT0', 'AT&T via 1-800-321-0288', 'British Telecom (UK)', and 'Calling Card via 0'. Below the list are three buttons: 'New...', 'Edit...', and 'Delete'. Further down are three text input fields: 'Account number:', 'Personal ID Number (PIN):', and 'Access phone numbers for:'. The 'Access phone numbers for:' field has three sub-entries: 'Long distance calls:', 'International calls:', and 'Local calls:'. At the bottom of the dialog are three buttons: 'OK', 'Cancel', and 'Apply'.

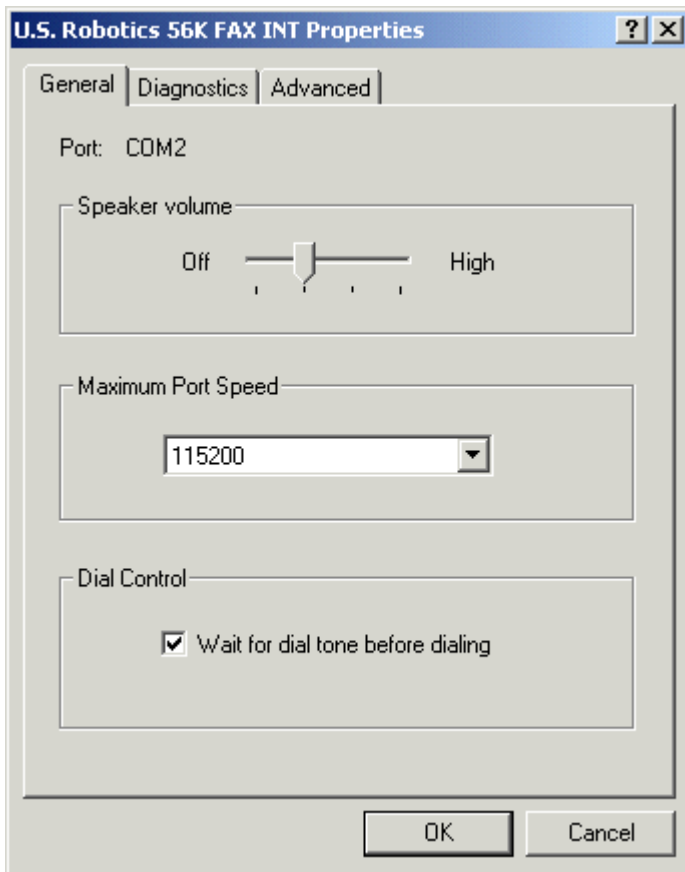
7. Select the **Dialing Rules** tab. Make any necessary changes. Select **OK**.



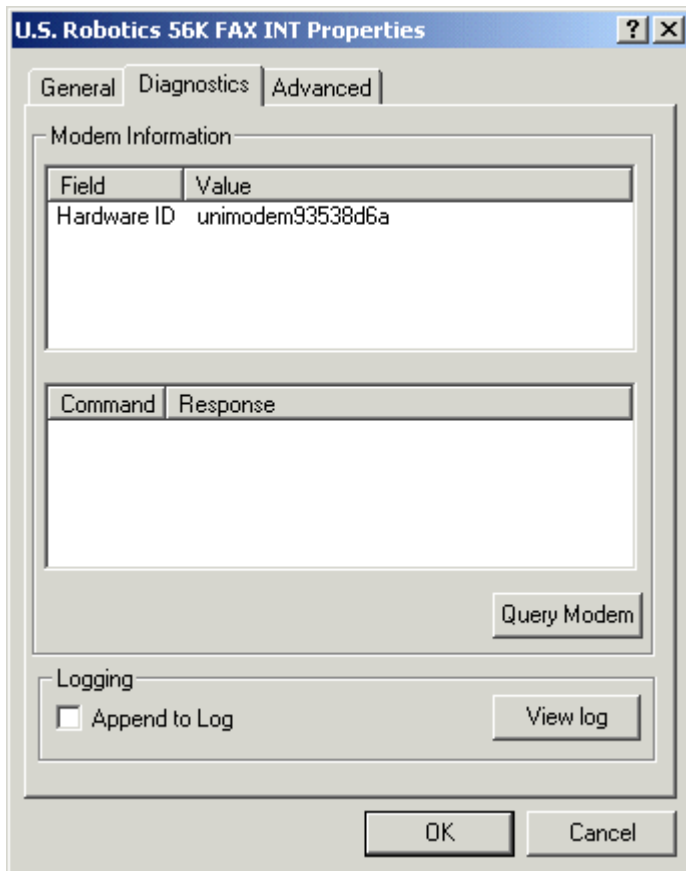
8. Select the **Modems** tab. Your internal modem name should appear in the white box. Select your modem and then select **Properties**.



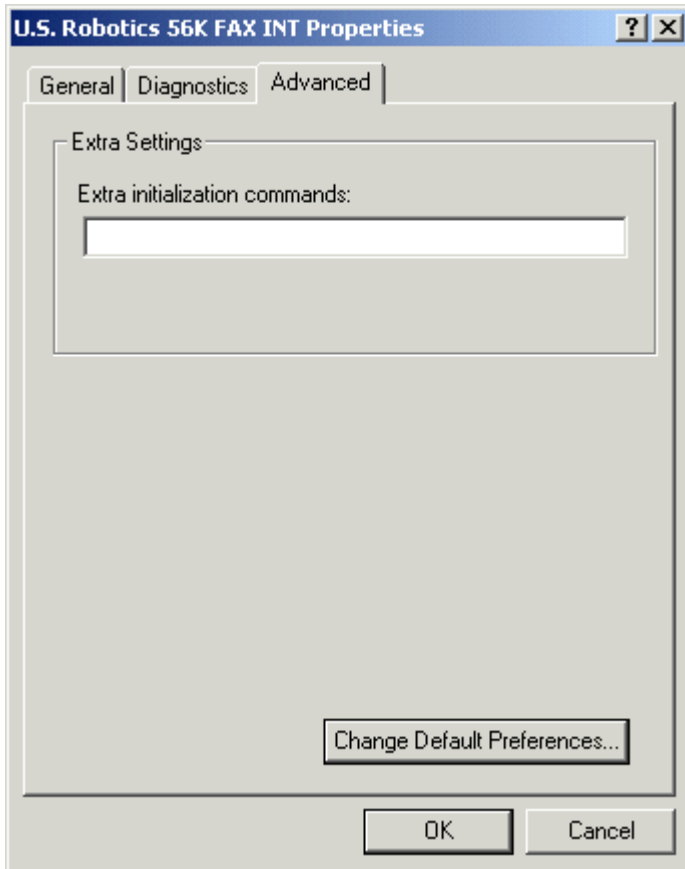
9. Under the General tab, you can adjust the speaker volume and port speed. The defaults are typically acceptable, but change them if you wish. Then select **OK**.



10. Select the **Diagnostics** tab. To determine if your operating system is communicating the modem, select the **Query Modem** button. If it passes, continue. If it fails, you need to reinstall the modem drivers or configure the modem differently.



11. Select the **Advanced** tab. Your screen should match the picture below. Select **OK**.



12. Under the Advanced tab, select **OK** to exit back to the Control Panel.

