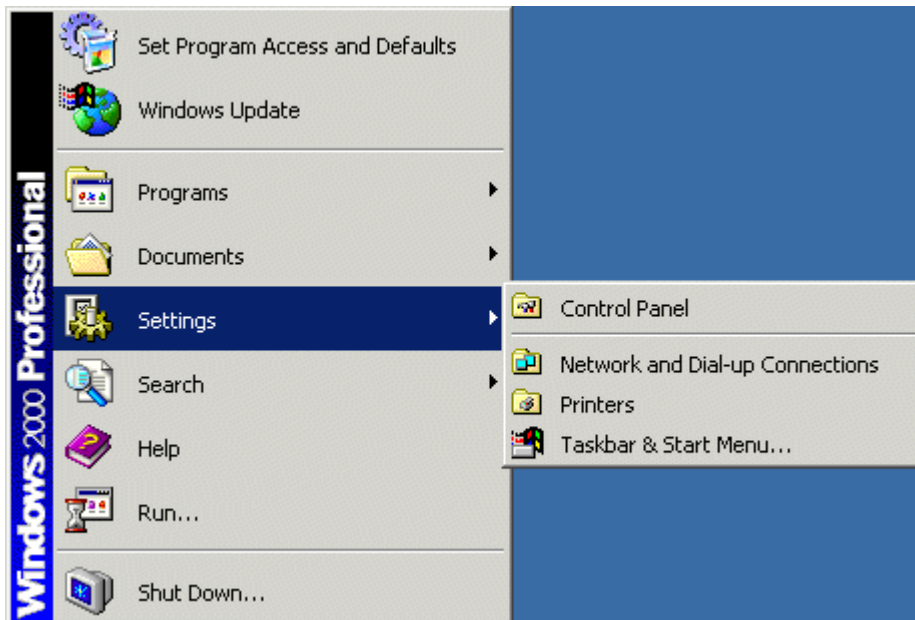


Windows® 2000 – Dial-Up Support

How to View the Current Dial-Up Connection Configuration

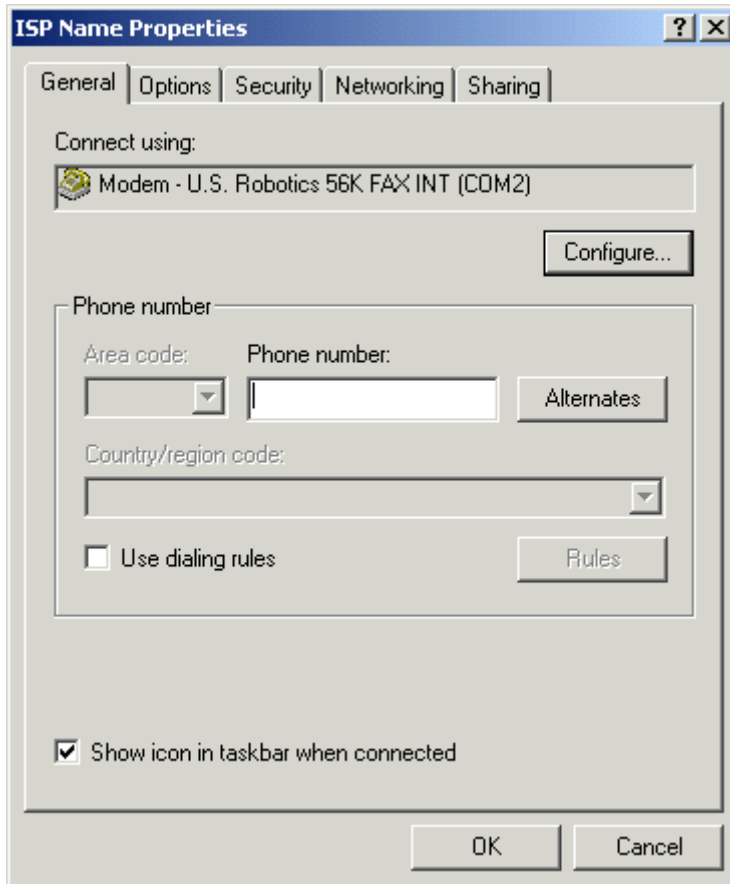
1. Select **Start**. Select **Settings**. Then, select **Network and Dial-up Connections** from the options on the right.



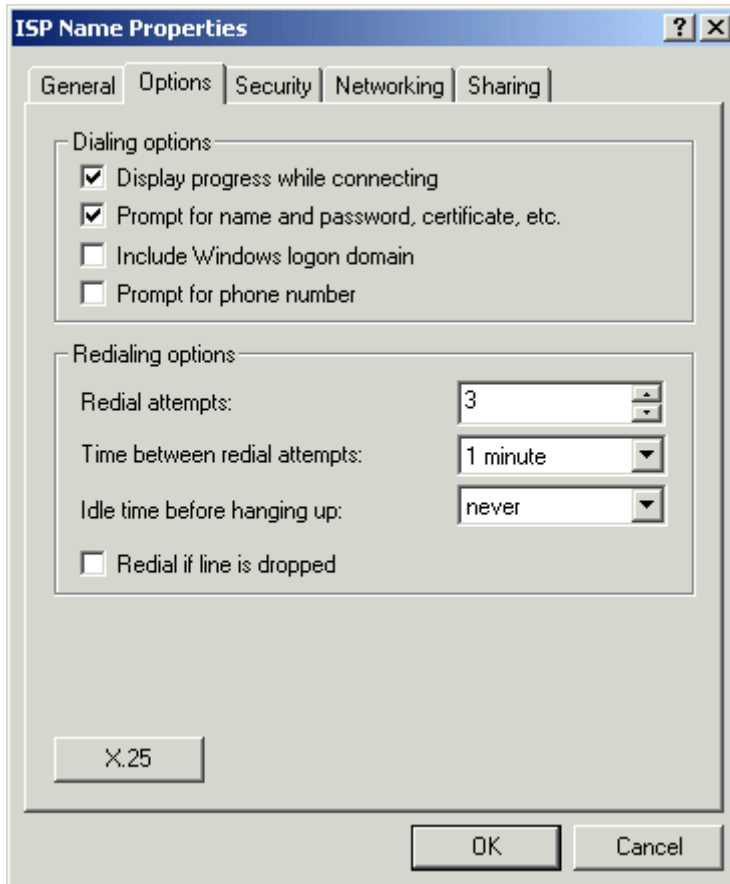
2. Right-click on **ISP dial-up**. Select **Properties**.



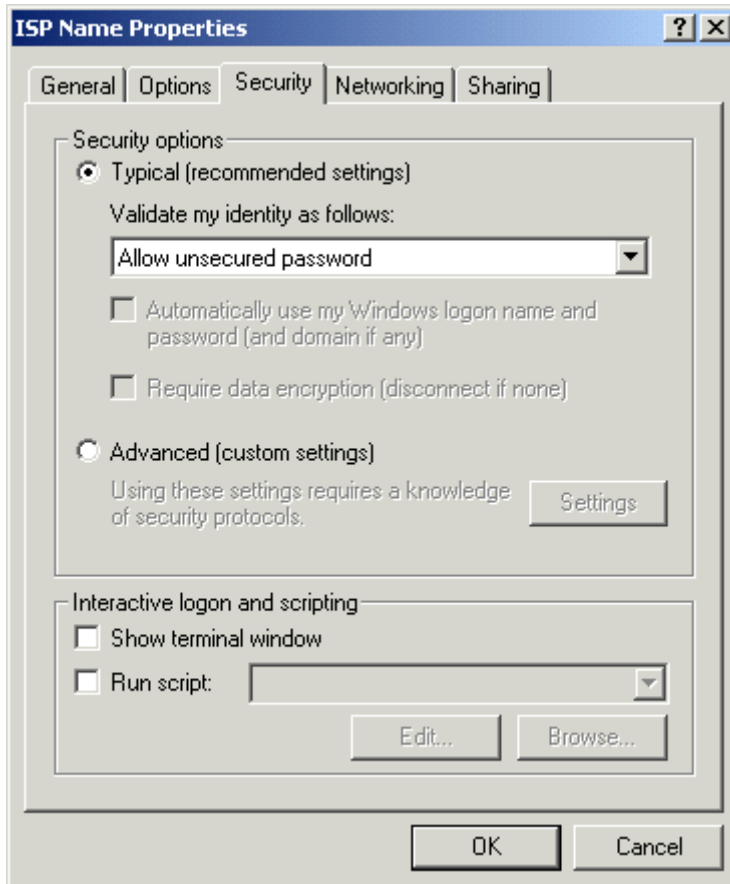
3. Confirm your local dial-up number under “Phone number.” Select the **Options** tab.



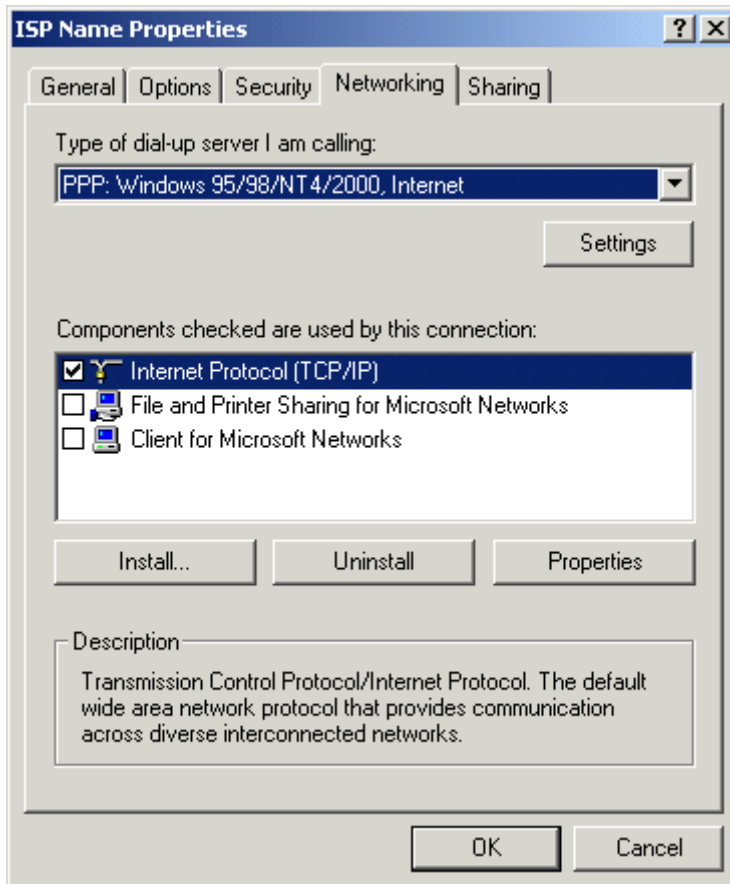
4. Select the **Security** tab.



5. Select the **Networking** tab.



6. Select the **Sharing** tab.



7. Select **OK** to return to Network and Dial-up Connections.

