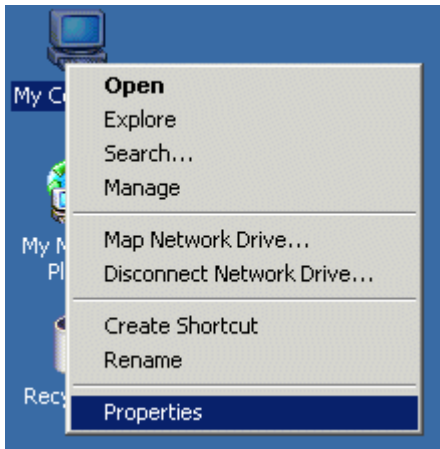
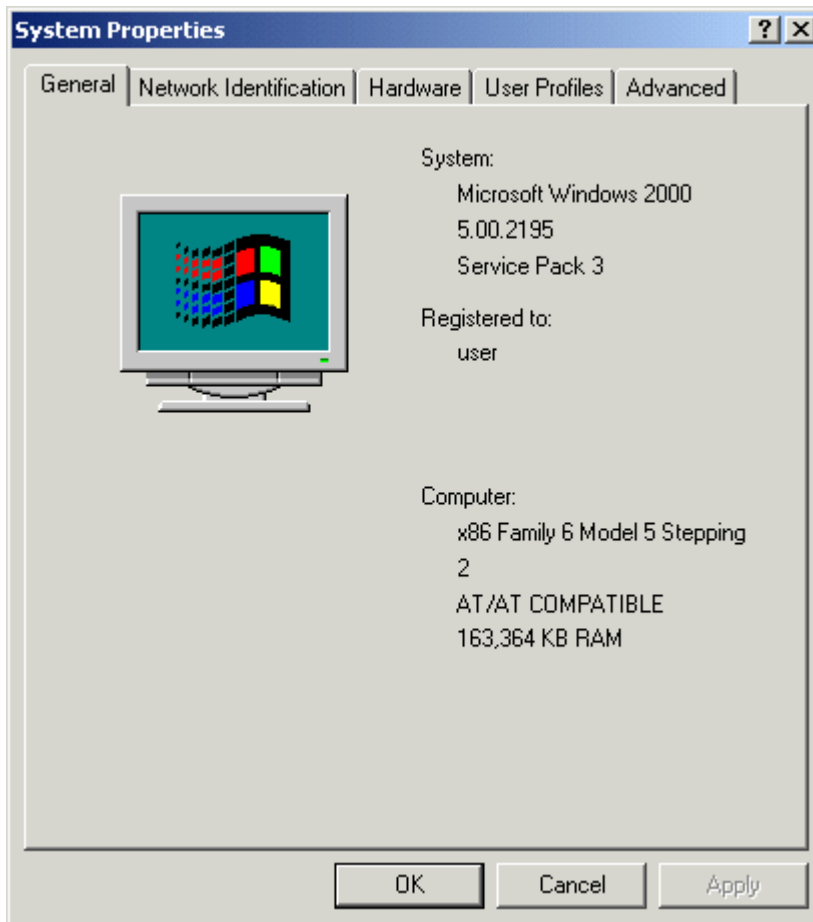


Windows® 2000 – Dial-Up Support
How to Check Modem Communication

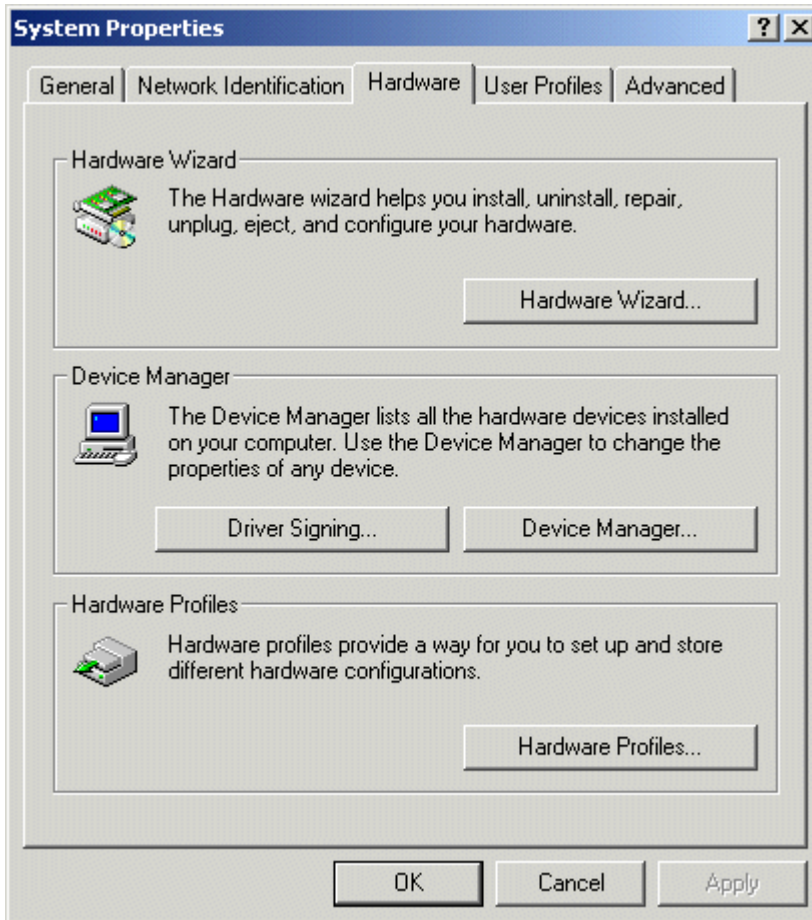
1. Right-click on **My Computer**. Select **Properties**.



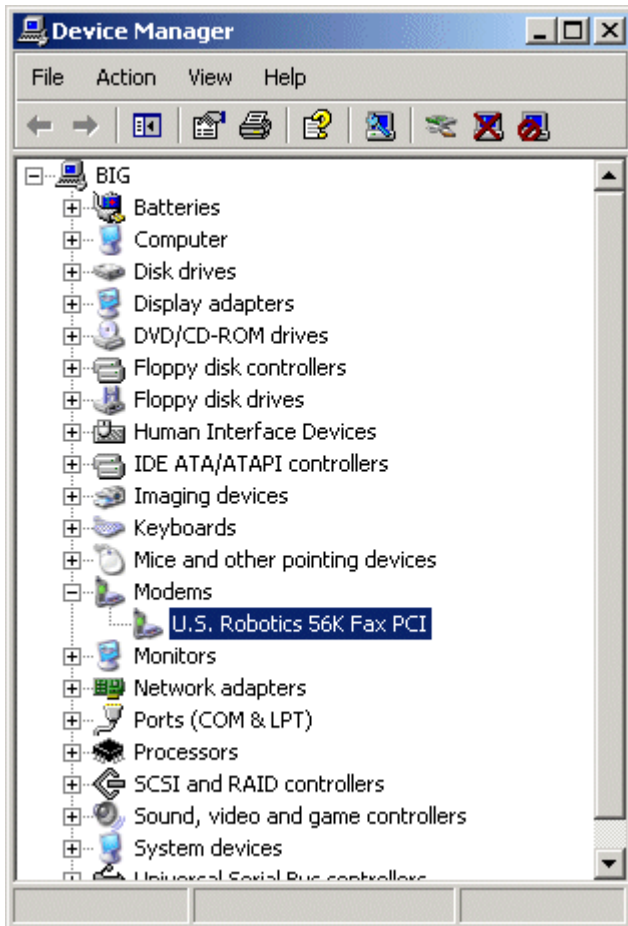
2. Select the **Hardware** tab.



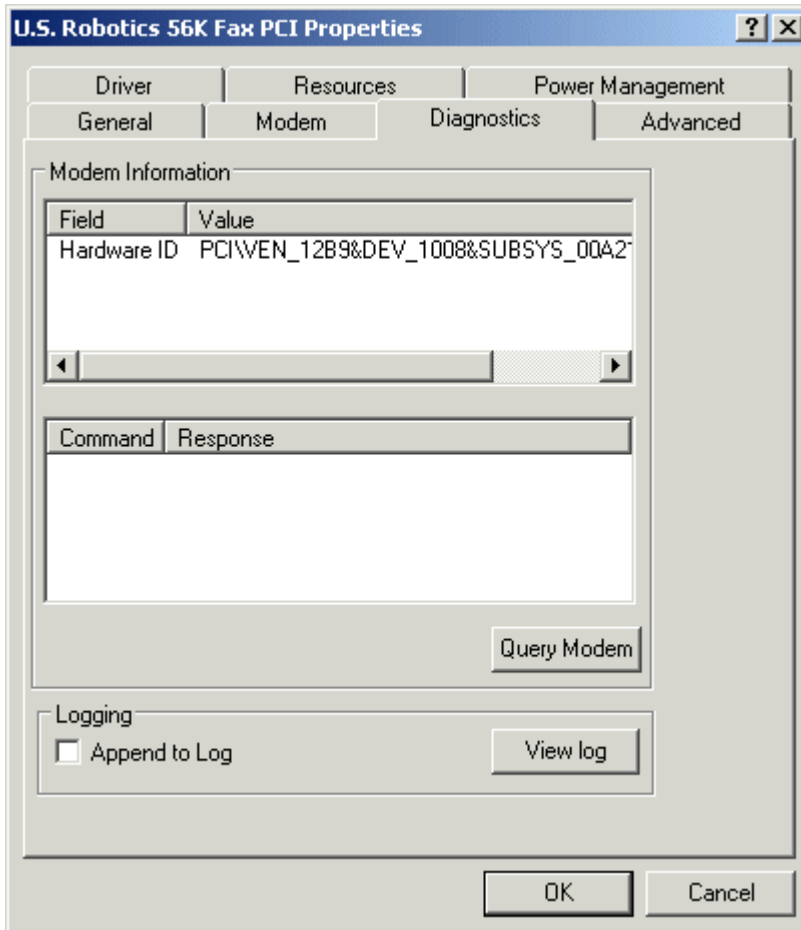
3. Select the **Device Manager** button.



4. In the Device Manager, select the **+** sign next to Modems. Right-click on your **modem**. Select **Properties**.



5. Select the **Diagnostics** tab. Select the **Query Modem** button.



6. This window will appear.



7. If Windows can communicate with the modem, your screen should look similar to the picture below. Select **OK**.
 - If Windows can't communicate with the modem, you'll need to reinstall the modem using the instructions provided with the modem.

