

## **Qwest® Wireless Card**

How to Install and Configure Drivers on a Computer with Windows® XP  
- New Installation Only -



### Use this document if:

- You want to install and configure your Qwest wireless card and the 2Wire drivers to work with your 2Wire modem.

### This document assumes:

1. You use the Qwest wireless card (manufactured by 2Wire).
2. Your computer has Windows XP operating system.
3. You have not previously installed any version of driver software for your wireless card. If you have already installed the driver software supplied on the CD, do not reinstall the driver software (do not use these instructions).
4. Your wireless card is not currently connected to your computer. This document includes instructions about when to connect the wireless card to your computer.

### Summary of the four-part process:

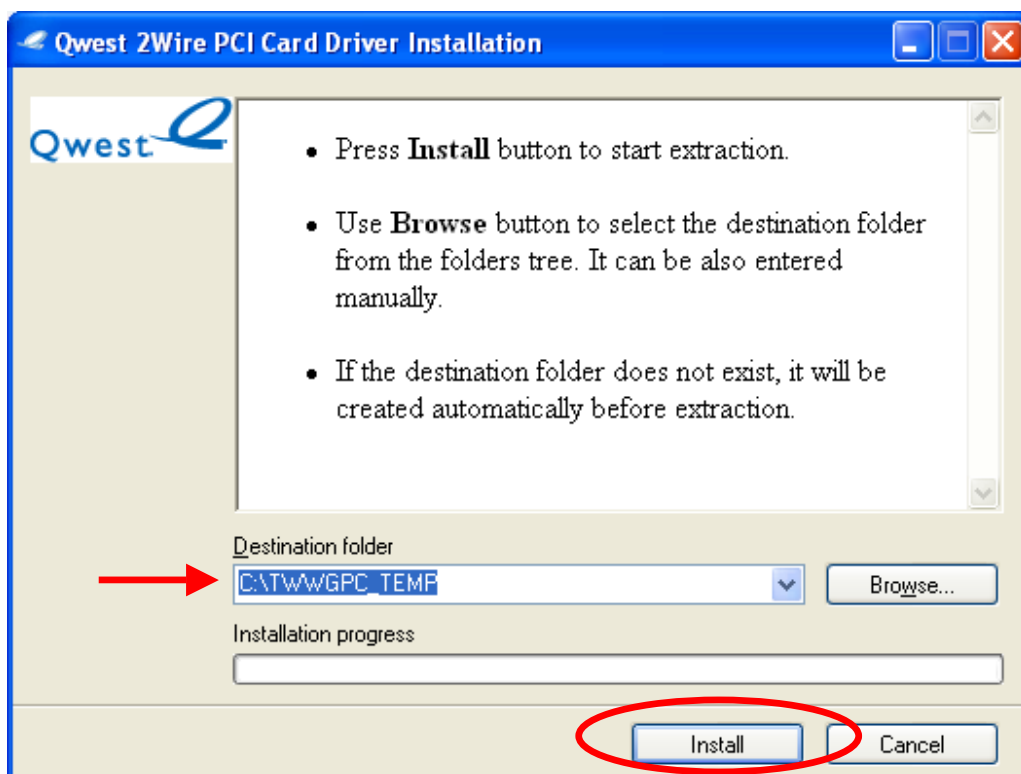
1. Download the executable file.
2. Run the executable file to extract all components.
3. Install the wireless card and the driver software.
4. Use the 2Wire Client Manager program to configure your wireless card.

Part 1: Download the executable file.

1. Confirm that your Qwest wireless card is NOT connected to your computer.
2. Click the “download file” link for your operating system on the Qwest Internet Help page.
3. Click **Save**.
4. Select **Desktop** in the “Save-in” drop-down box. Then click **Save**.
5. Confirm you can see the downloaded file on your desktop. The file name is “2Wire\_XP32PCIdriver\_Install”

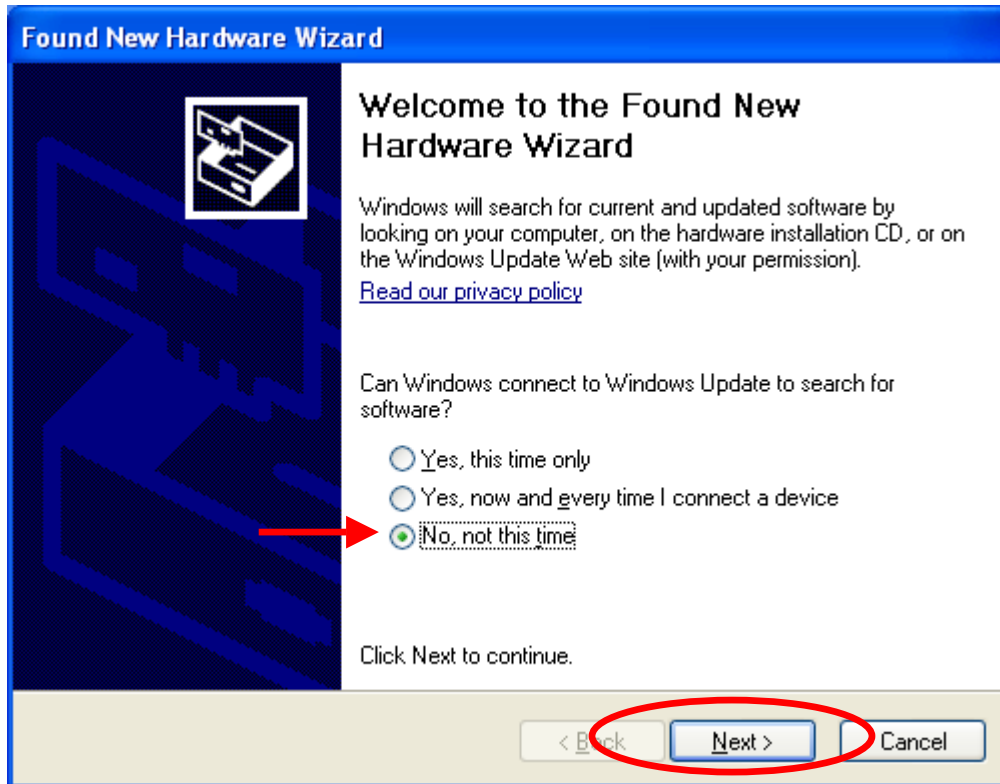
Part 2: Run the executable file to extract all components.

1. Double-click the file you downloaded to your desktop.
2. A window will appear. Click **Install** to extract all the component files to the “Destination folder.”

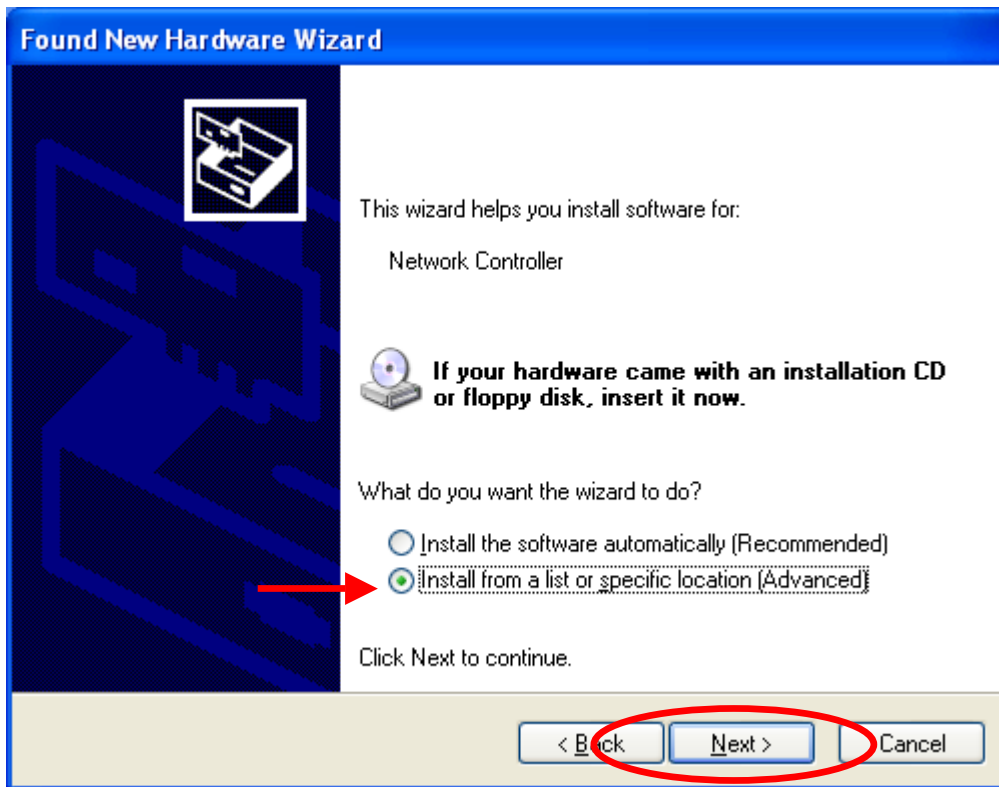


Part 3: Install the wireless card and the driver software.

1. Insert the Qwest wireless card into the slot in your computer.
2. The “Found New Hardware Wizard” will start automatically.  
Click on the radio button for “No, not this time,” and then click **Next**.

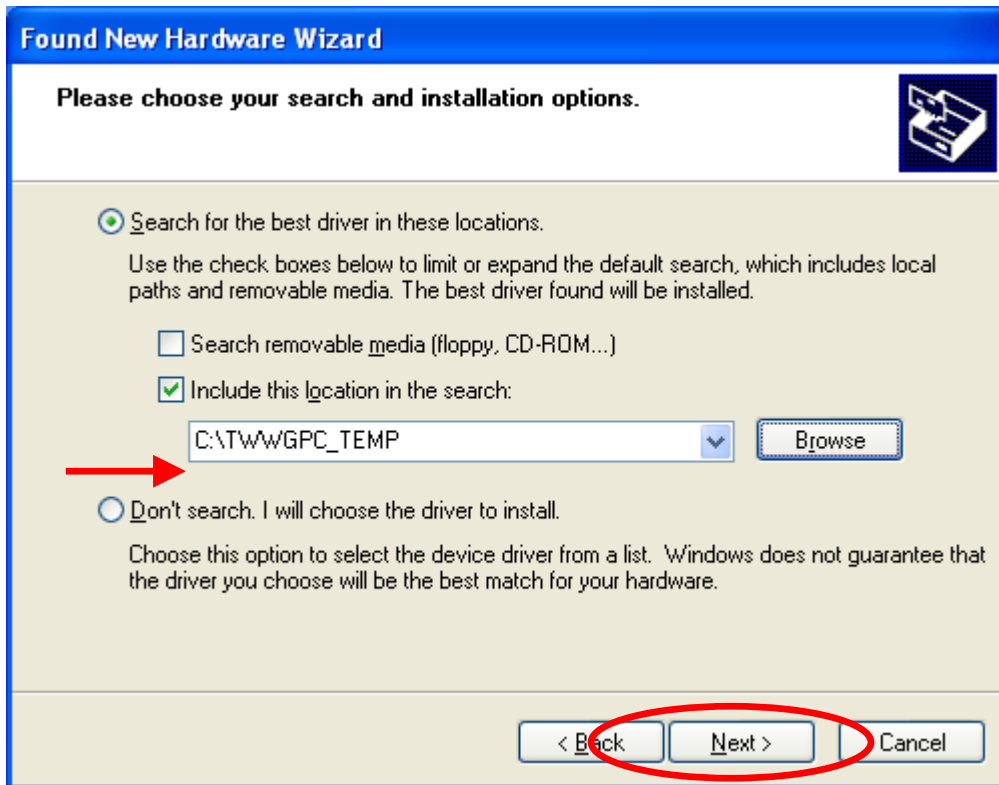


3. Click on the radio button for “Install from a list or specific location (Advanced)”, and then click **Next**.



4. Confirm that "C:\TWWGPC\_TEMP" appears in the drop-down box. If not, use the **Browse** button to find and select it as the location of the driver software.

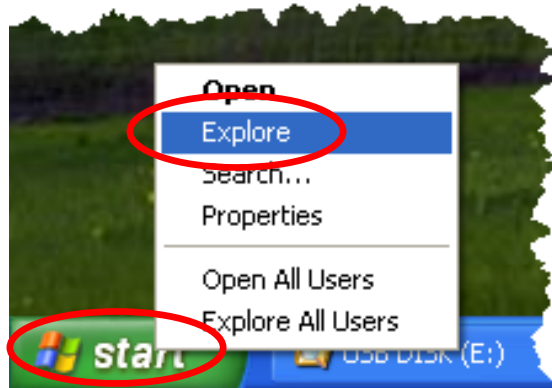
Click **Next**.



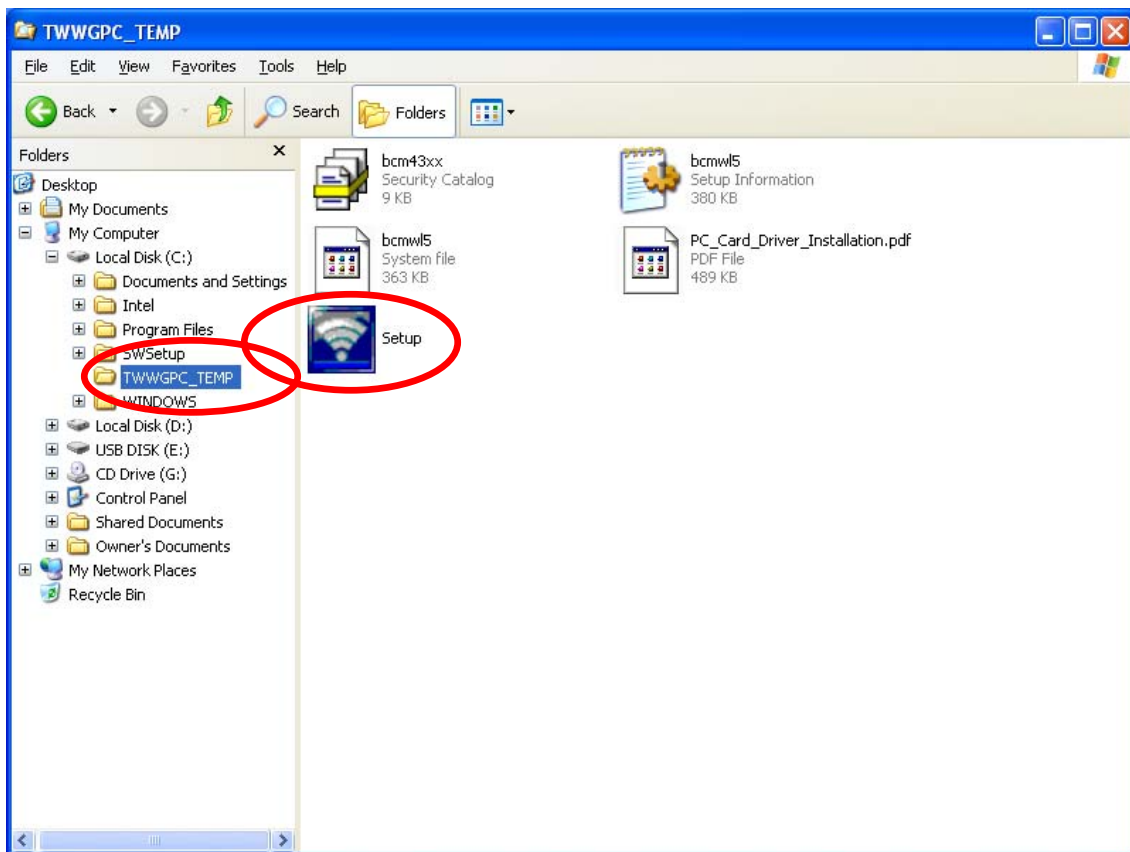
5. Follow the on-screen instructions to finish the "Found New Hardware Wizard".

Part 4: Use the 2Wire Client Manager program to configure your wireless card.

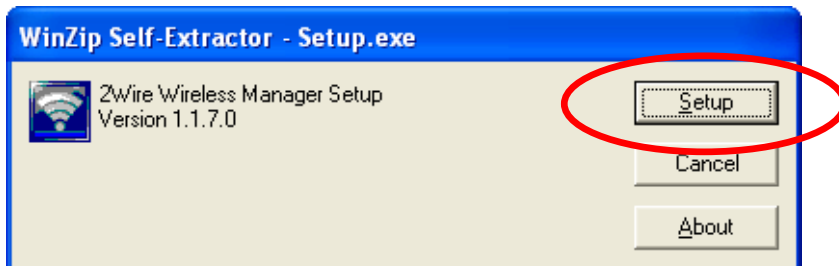
1. From the computer desktop, right-click on the **Start** button and left-click on **Explore**.



2. Find and left-click on the "TWWGPC\_TEMP" folder. Double-click on **Setup**.

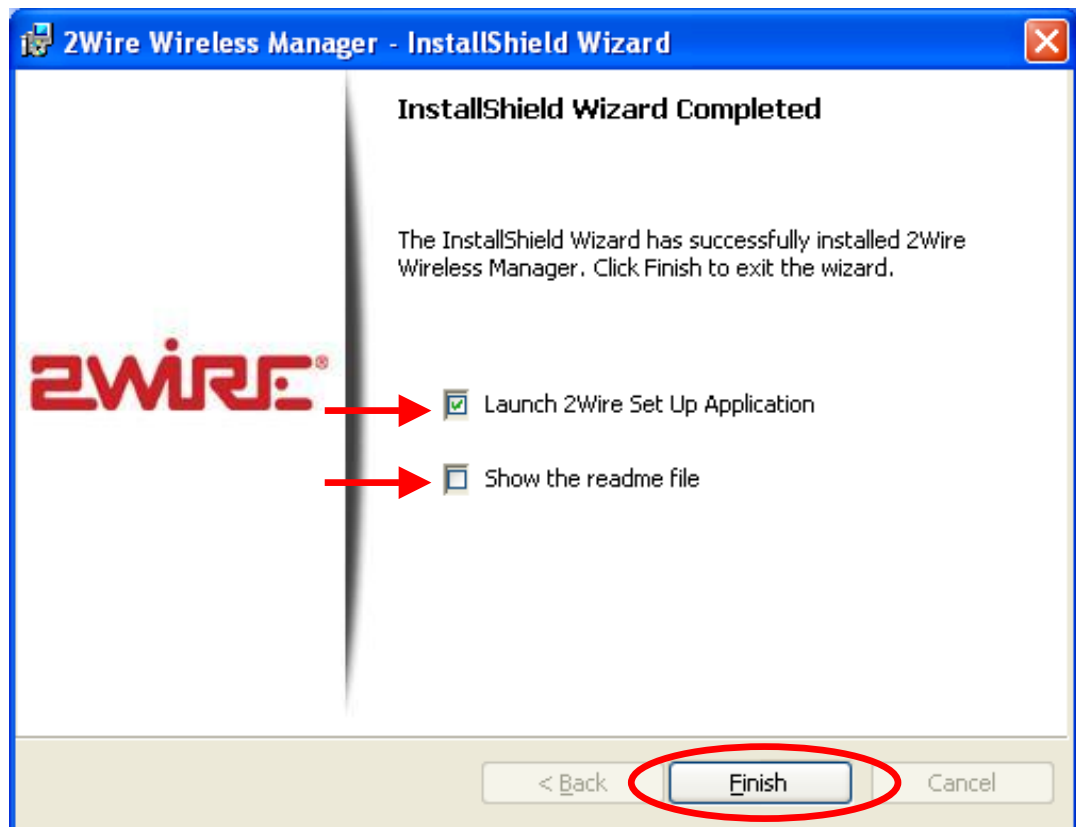


3. Click **Setup**.

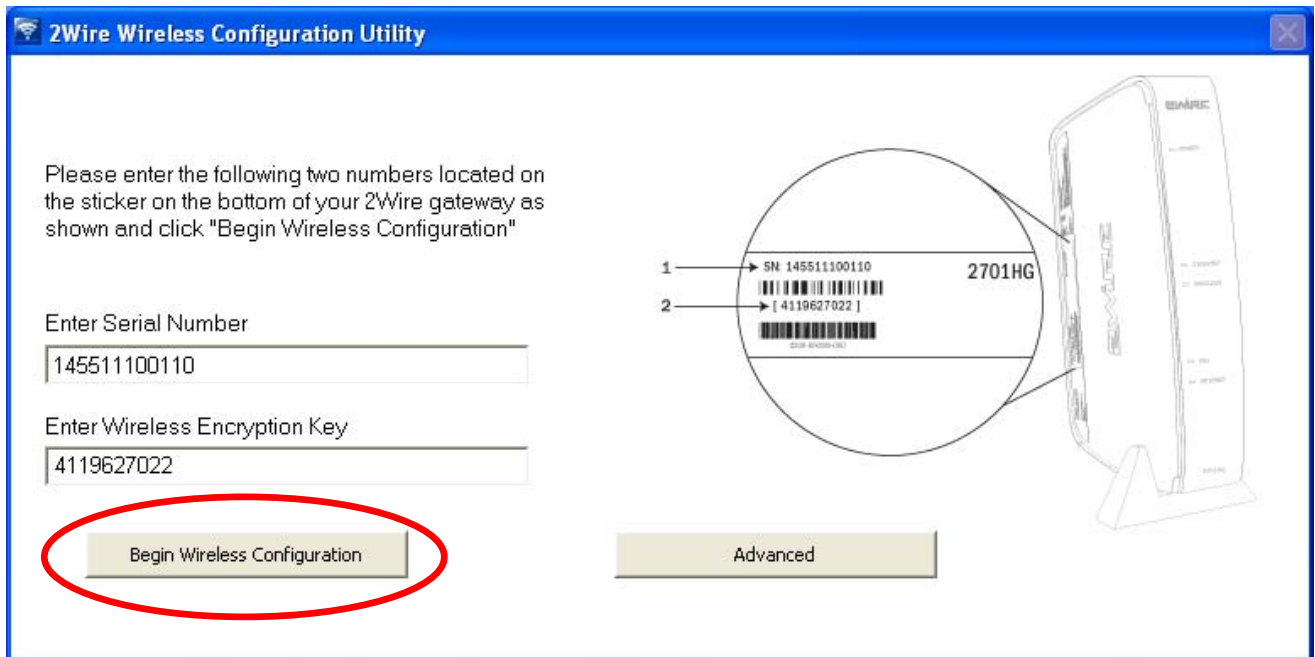


4. Follow the instructions below to complete the “2Wire Wireless Manager – InstallShield Wizard”:
  - i. On the “Welcome” page, click **Next**.
  - ii. On the “License Agreement” page:  
Click the radio button for “I accept the terms in the License Agreement.”  
Click **Next**.
  - iii. On the “Destination Folder” page, click **Next**.
  - iv. On the “Ready to Install the Program” page, click **Install**.

5. On the "InstallShield Wizard Completed" page:
  - i. Check the box for "Launch 2Wire Set Up Application."
  - ii. Uncheck the box for "Show the readme file."
  - iii. Click **Finish**.



6. In the window named "2Wire Wireless Configuration Utility":
  - i. Enter the Serial Number (1) from the sticker on the bottom of your 2Wire gateway.
  - ii. Enter the Wireless Encryption Number (2).
  - iii. Click **Begin Wireless Configuration**.



7. Test your wireless connection by opening your Internet browser to a favorite web page.