

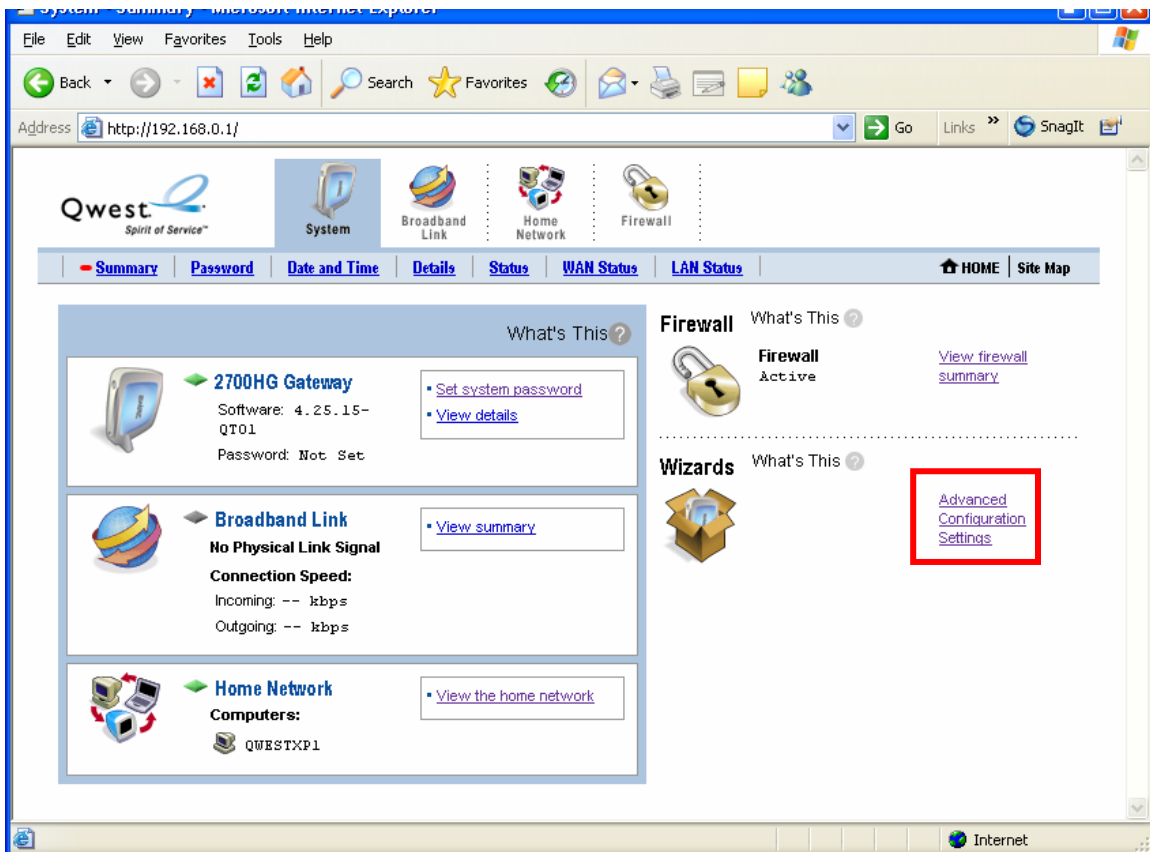
Qwest® Advanced Networking Modem with Wireless: 2Wire® 2700 HG

How to Set Up PPPoA Dynamic IP Addressing

The Qwest® Advanced Networking Modem with Wireless: 2Wire® 2700 HG provides dynamic IP Addressing by default.

Follow these steps to add the PPP credentials for a dynamic IP configuration:

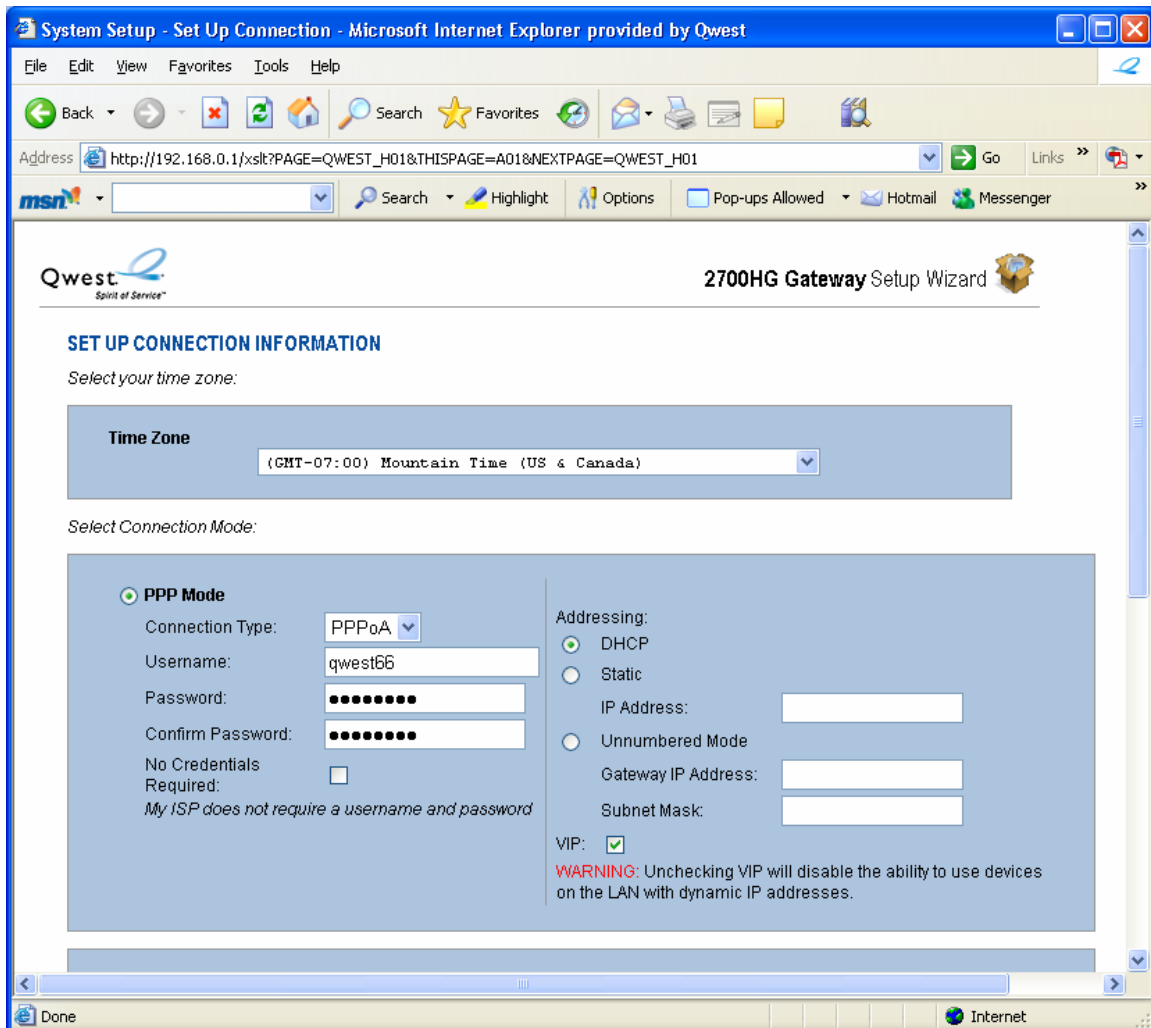
1. Enter “192.168.0.1” in the Address bar of your Internet browser to open the Qwest Advanced Networking Modem with Wireless: 2Wire 2700 HG home page. Then, select the **Advanced Configuration Settings** link in the lower-right corner.



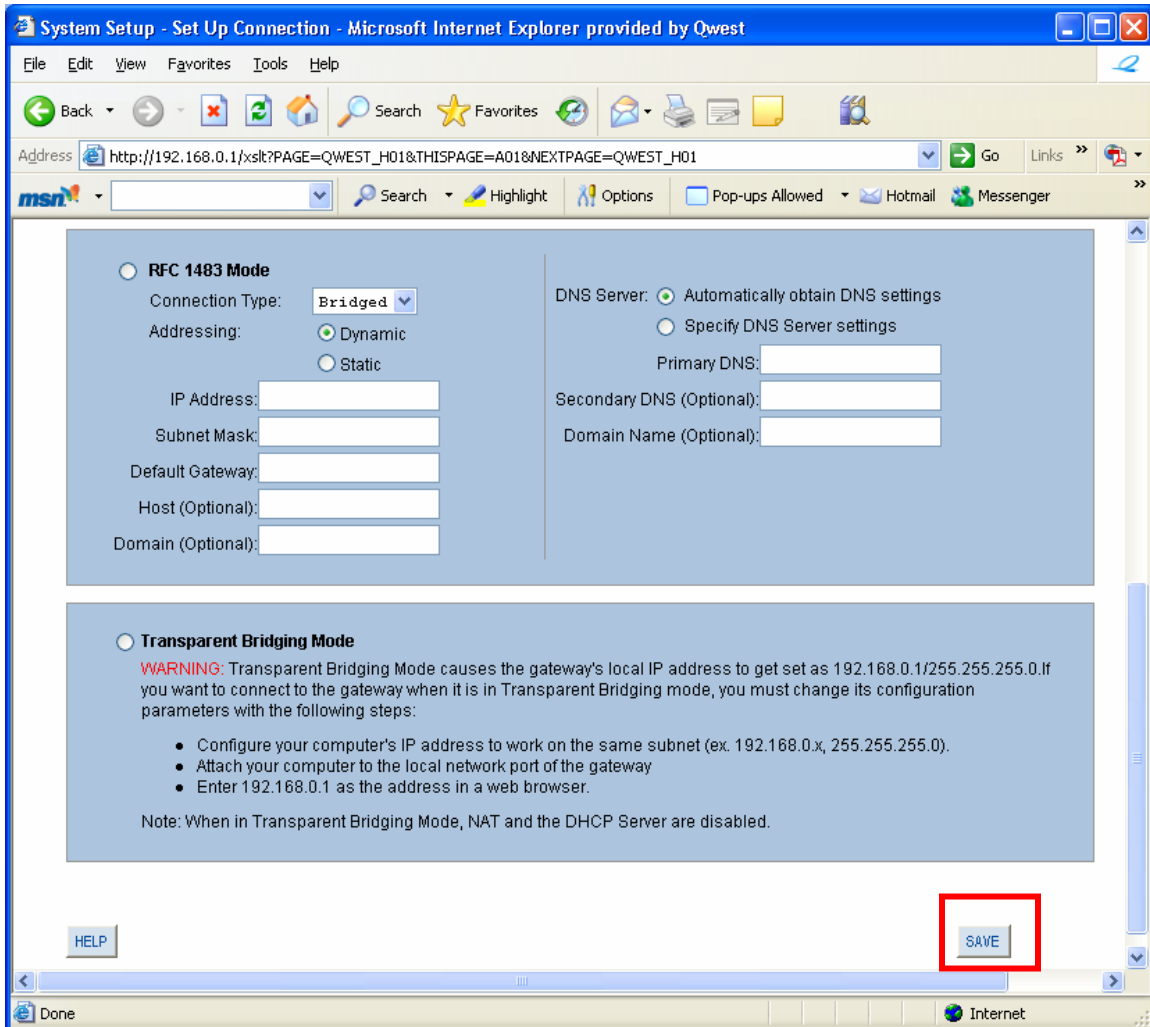
2. Select your **Time Zone** from the drop-down window.

Under the **PPP Mode** radio button, select from the “Connection Type” drop-down list and enter your **Username** and **Password**.

Enter your password again in the **Confirm Password** field.



3. Scroll down to select **SAVE**.





4. Select the **HOME** button.

The **HOME** button redirects you back to the Qwest Advanced Networking Modem with Wireless: 2Wire 2700 HG home page.

