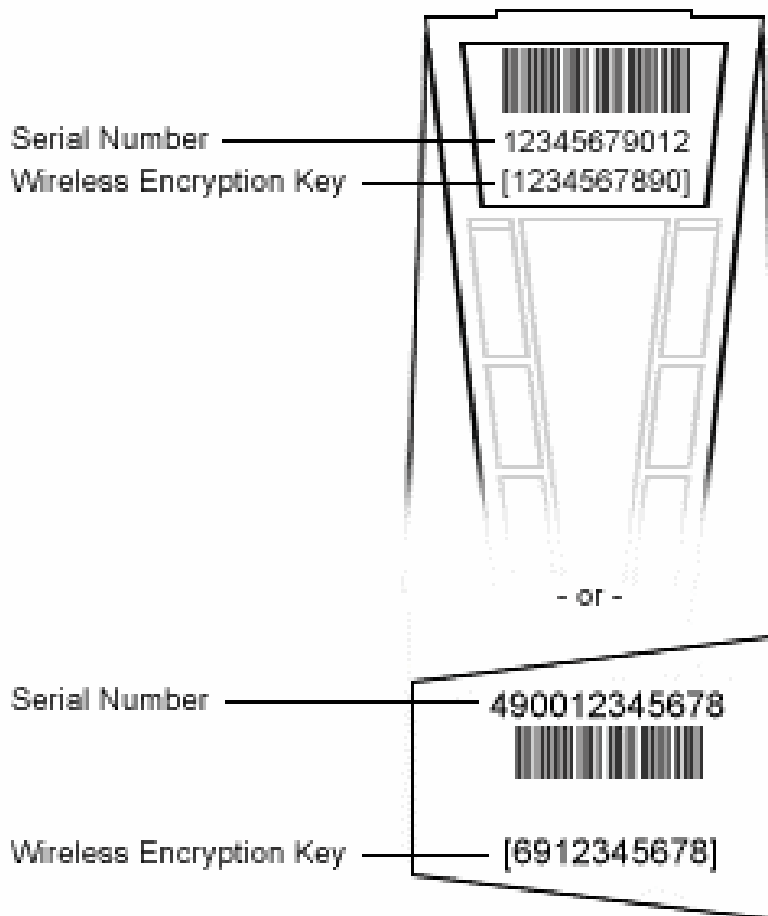


**Qwest® Advanced Networking Modem with Wireless:
2Wire® 2700 HG**

**How to Configure Wireless Adapters
Windows® XP**

The following instructions are for all wireless adapters supported by Windows® XP used with the Qwest® Advanced Networking Modem with Wireless: 2Wire® 2700 HG.

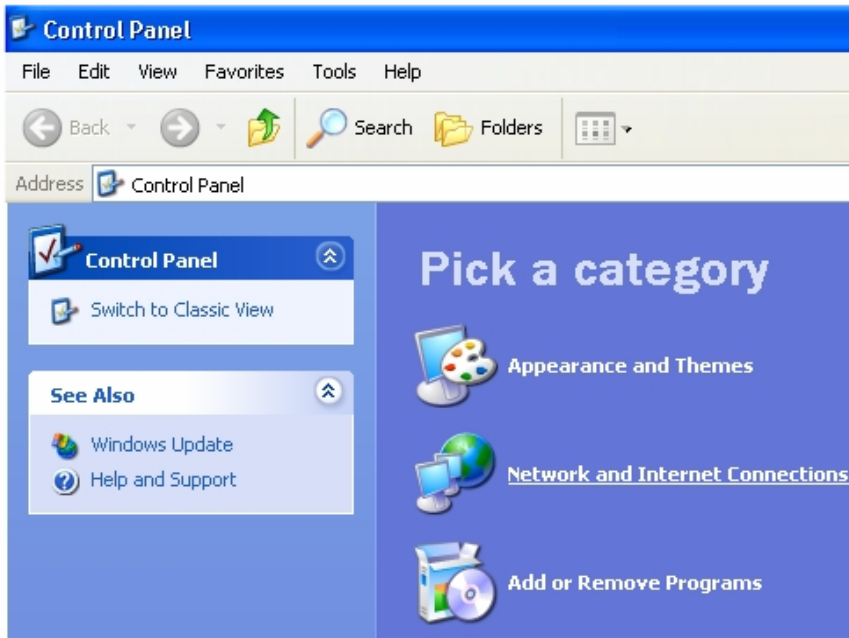
1. Locate your serial number and Wireless Encryption Key (WEP) on the bottom of your wireless gateway.



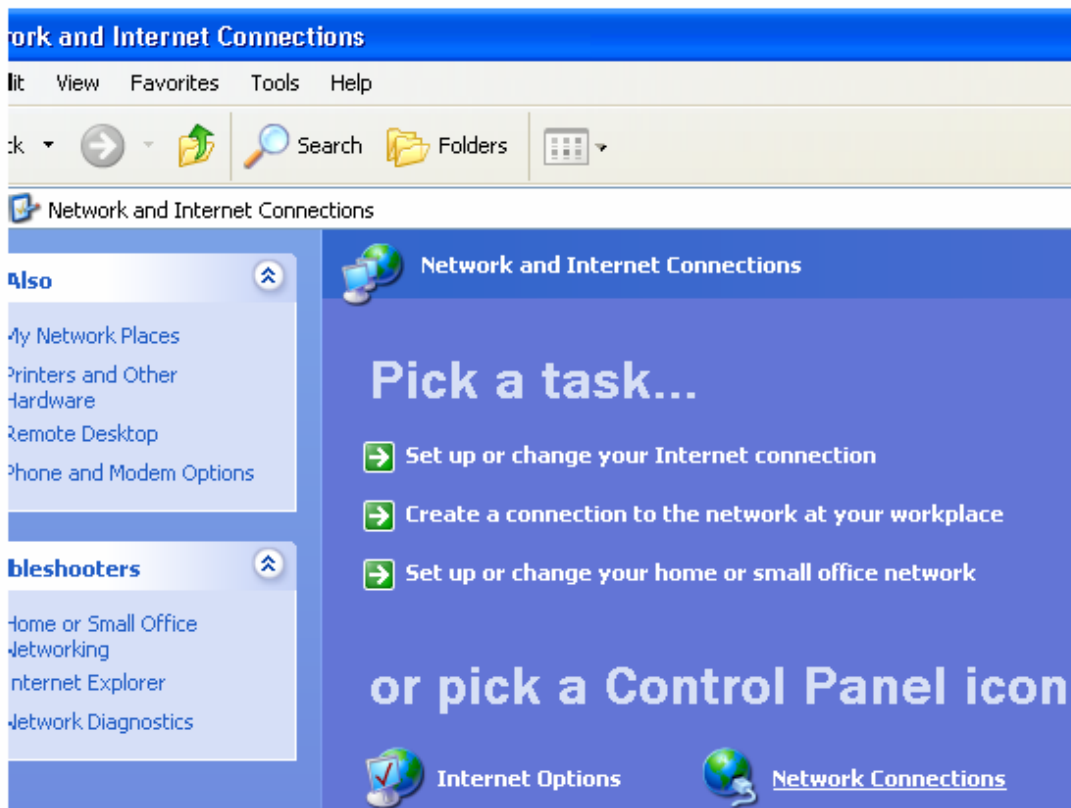
2. Select **start**, then **Control Panel**.



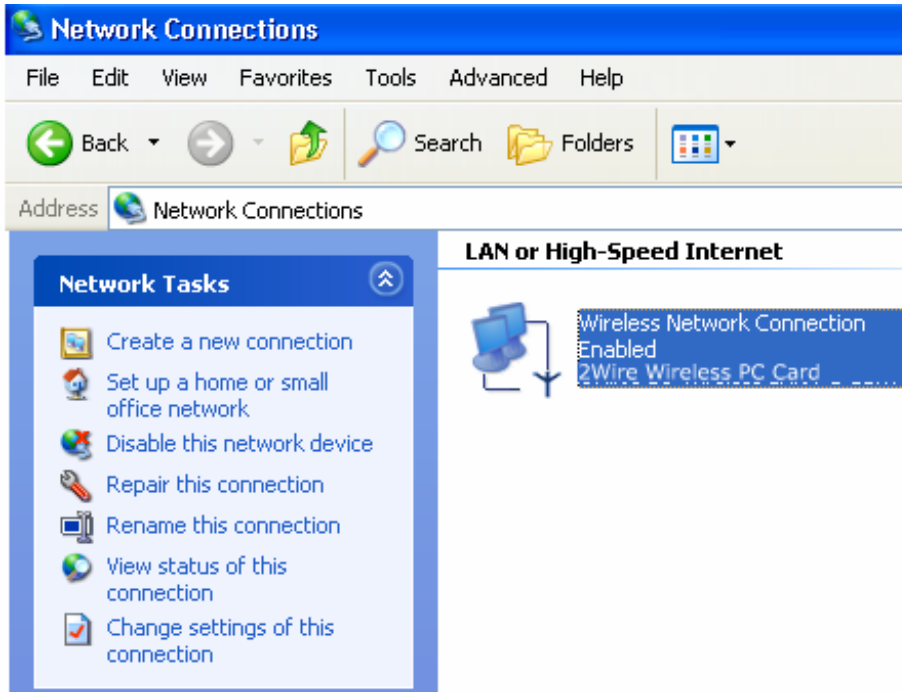
3. Select the **Network and Internet Connections** link.



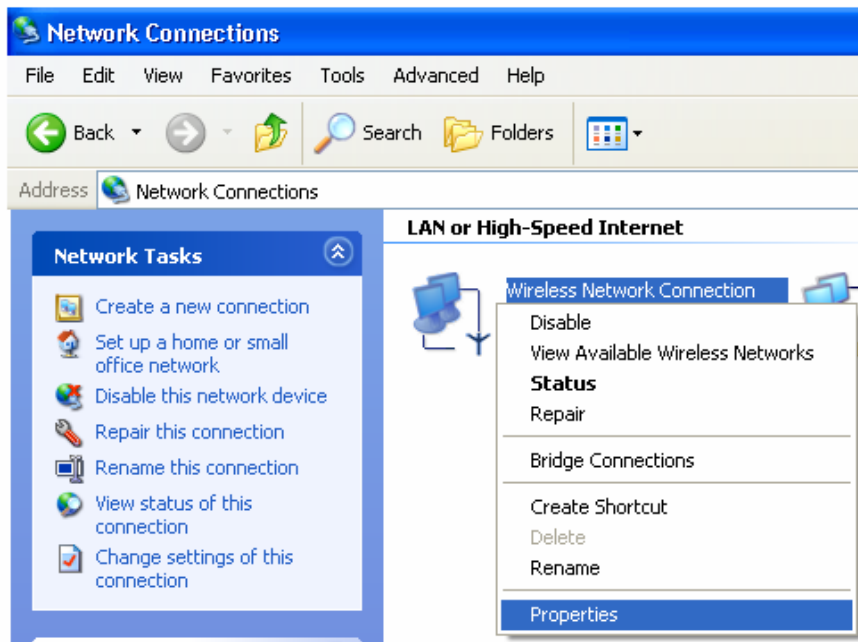
4. Select the **Network Connections** link.



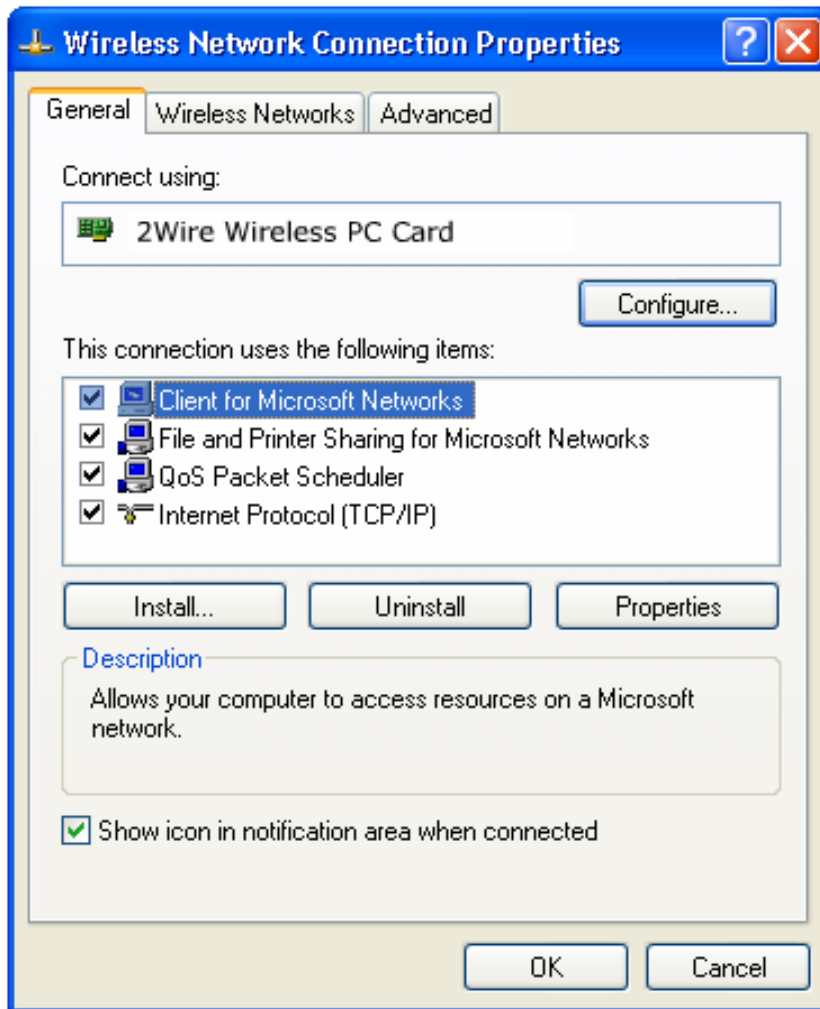
5. Locate your “Wireless Network Connection”.



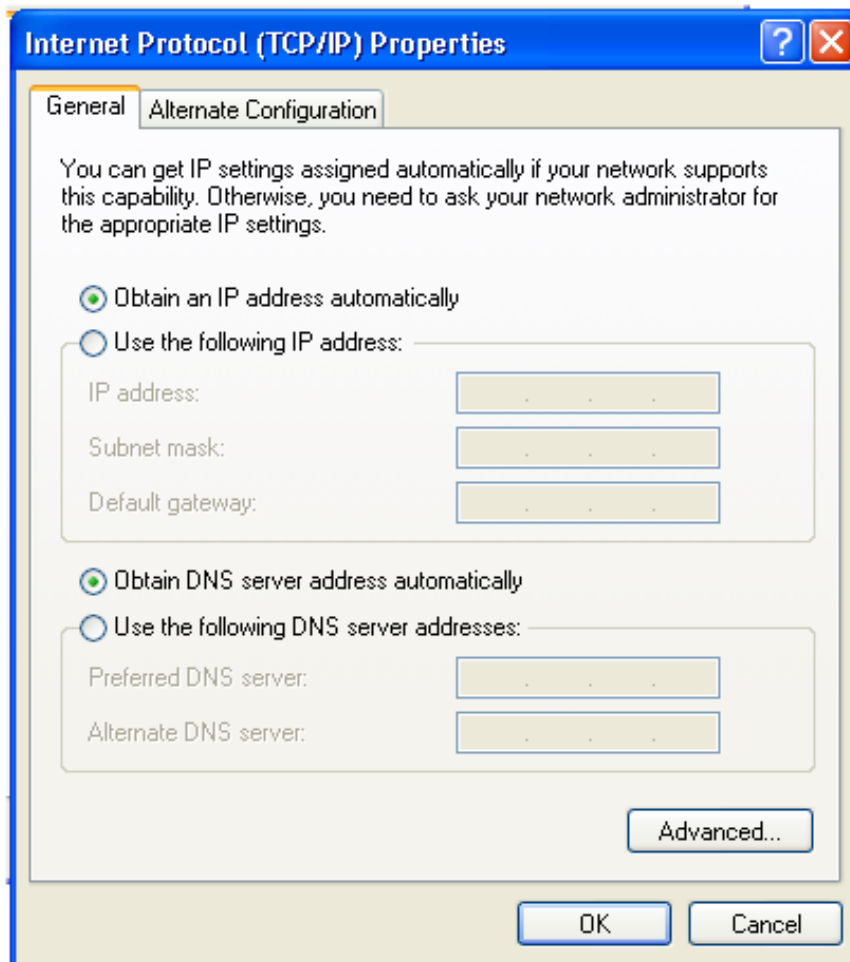
6. Right-click on the “Wireless Network Connection”. Then, select **Properties**.



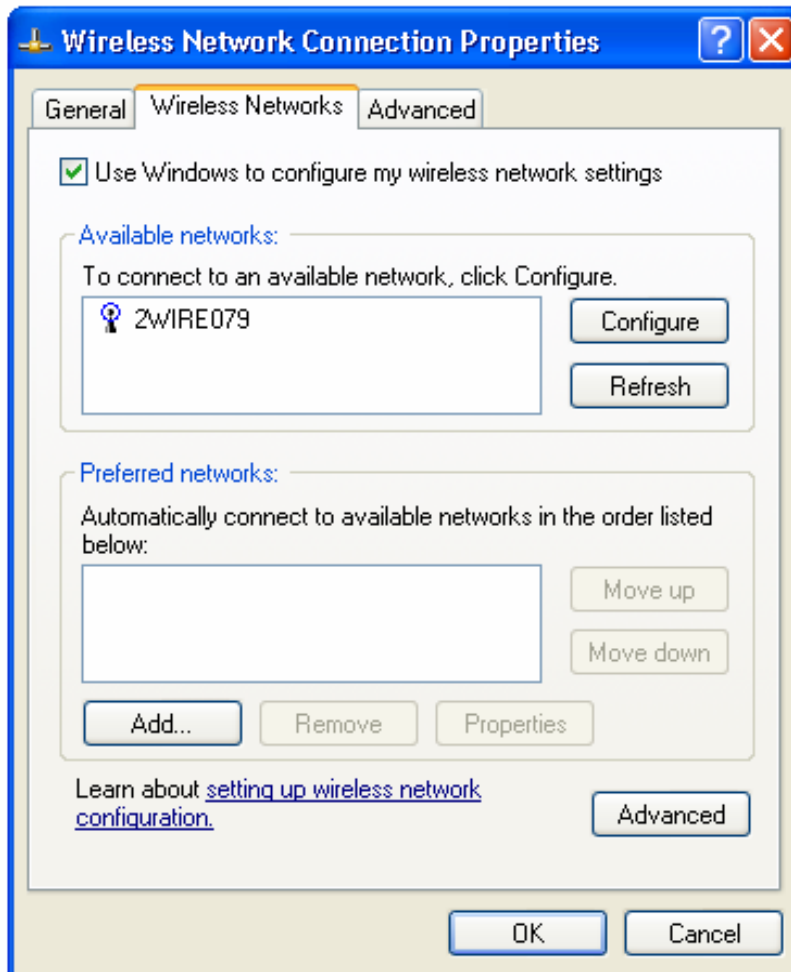
7. Check the “Internet Protocol (TCP/IP)” checkbox. Then, select **Properties**.



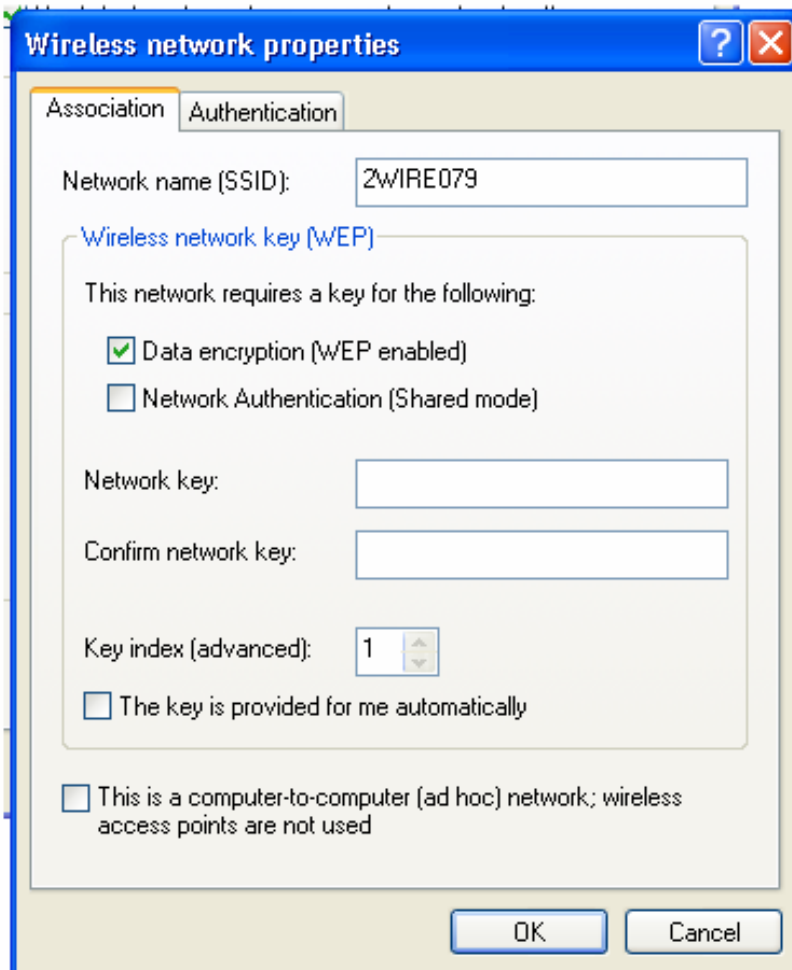
8. Select "Obtain an IP address automatically" and "Obtain DNS server address automatically" Then, select **OK**.



9. Select the **Wireless Networks** tab. Under **Available networks**, highlight the 2Wire® wireless gateway network. Then, select **Configure**.



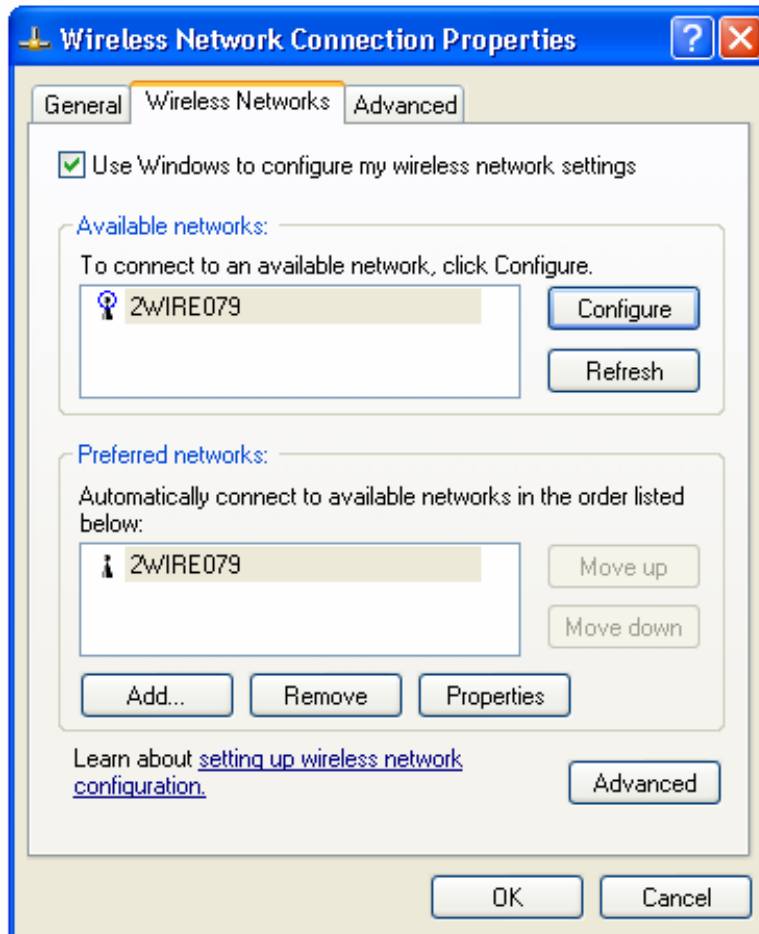
10. Uncheck the “The key is provided for me automatically” checkbox.



11. In the **Network key** field, enter the 10-digit encryption key located at the bottom of the wireless gateway. Enter the key again in the **Confirm network key** field. Select **OK**.

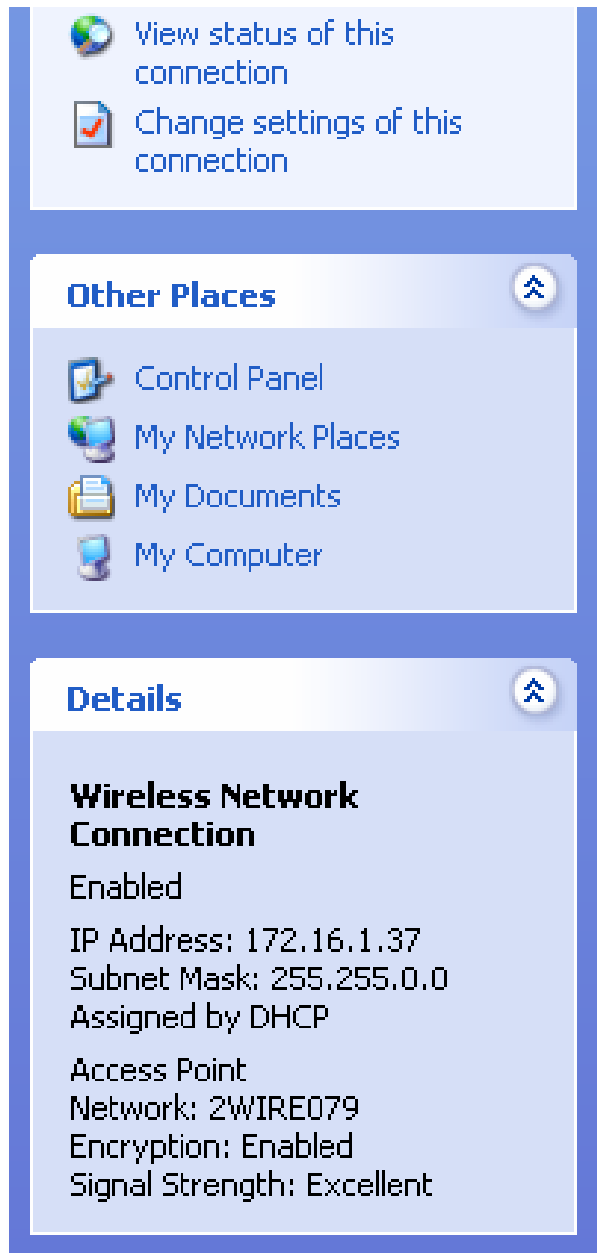
The screenshot shows a Windows-style dialog box titled "Wireless network properties" with a blue title bar and standard window controls (help, close). The dialog has two tabs: "Association" and "Authentication", with "Authentication" selected. The "Network name (SSID)" field contains the text "2WIRE079". Below this is a section titled "Wireless network key (WEP)" which contains the text "This network requires a key for the following:". Underneath are two checked checkboxes: "Data encryption (WEP enabled)" and "Network Authentication (Shared mode)". There are two text input fields for the network key, both containing ten black dots. The "Key index (advanced)" is set to "1" with up and down arrow buttons. At the bottom of the dialog are "OK" and "Cancel" buttons.

12. The wireless gateway network displays under **Preferred networks**. Select **OK**.



13. In the "Network Connections" window under **Wireless Network Connection** "Details", verify the IP Address.

If IP address **169.xxx IP** still appears, reboot your computer.



The screenshot shows a Windows Network Connections window. At the top, there are two options: "View status of this connection" and "Change settings of this connection". Below this is a section titled "Other Places" with a list of links: "Control Panel", "My Network Places", "My Documents", and "My Computer". The bottom section is titled "Details" and shows the following information for the "Wireless Network Connection":

- Enabled
- IP Address: 172.16.1.37
- Subnet Mask: 255.255.0.0
- Assigned by DHCP
- Access Point
- Network: 2WIRE079
- Encryption: Enabled
- Signal Strength: Excellent