



Qwest® Advanced Networking Modem with Wireless: 2Wire® 2700 HG

How to Upgrade to Windows® XP

Windows® XP is the recommended operating system for the Qwest Advanced Networking Modem with Wireless: 2Wire 2700 HG monitor application.

This is recommended because:

- Registry incompatibilities exist between previous Windows operating systems and Windows XP
- The Qwest Advanced Networking Modem with Wireless: 2Wire 2700 HG accesses the Windows registry for various activities.

Follow these steps to upgrade to Windows XP:

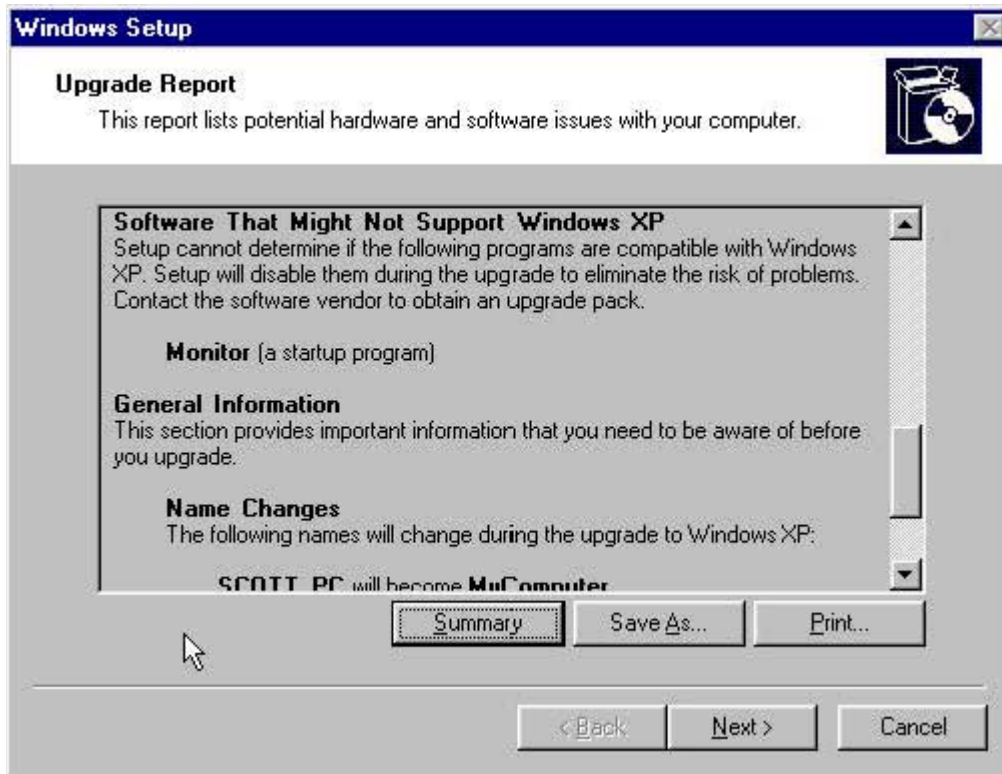
1. **Uninstall** the Wireless Gateway monitor application (if installed).
2. **Install** the Windows XP upgrade.
3. **Reinstall** the Wireless Gateway monitor application after the upgrade is complete.

UNINSTALL

1. Open the Windows Control Panel folder.
2. Select **Add/Remove Programs**.
3. Locate the application, "Qwest Advanced Networking Modem with Wireless: 2Wire 2700 HG", and select **remove** or **uninstall**.
4. The uninstall utility launches, and removes the Qwest Advanced Networking Modem with Wireless: 2Wire 2700 HG monitor application.

INSTALL

1. Insert the Qwest Advanced Networking Modem with Wireless: 2Wire 2700 HG Set Up CD. Run the Gateway software set up process on the upgraded computer.
2. If you don't uninstall the Wireless Gateway Monitor before upgrading your computer to Windows XP, the XP upgrade wizard notifies you that the Wireless Gateway Monitor may not support XP.



3. If you don't reinstall the Wireless Gateway Monitor after Windows XP has been loaded, you will receive a warning message from the **Qwest® Advanced Networking Modem with Wireless: 2Wire® 2700 HG** monitor indicating that you must upgrade the application.

