



**Qwest® Advanced Networking Modem with Wireless:
2Wire® 2700 HG**

**How to Set Up File Sharing
Set Up Folders to Share
Windows® 98/ME**

When you share folders in Windows® 98/ME, all computers connected to the Qwest® Advanced Networking Modem with Wireless: 2Wire® 2700 HG can access the shared folder and related files.

After enabling file and printer sharing on your Windows 98/ME computer, you can set up the folders you want to share.

- In the following example, the folder “C:\Music\Jazz” is being shared using the share name “Jazz Music.”

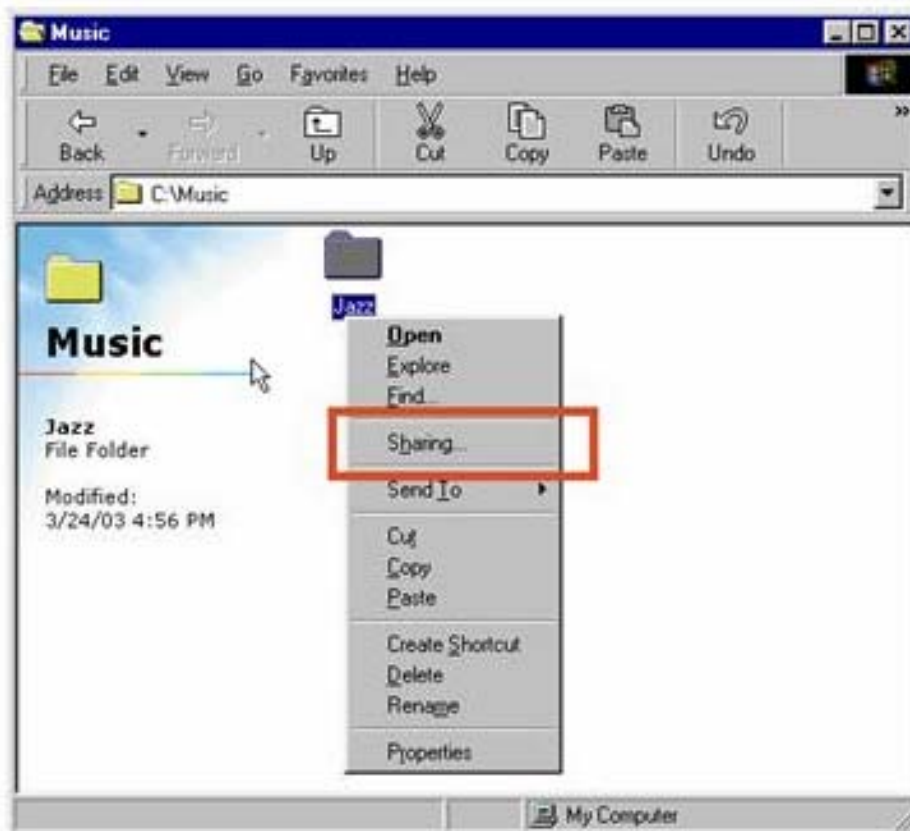
Note: **DO NOT** press the “**ESC**” key or select **Cancel** if prompted to provide a user name and password during Windows start-up.

- By doing so, you won't have access to shared files on the Windows 98 or Windows ME computer.
- If you didn't select a user name or password previously, simply choose one by entering the desired values and select **OK**.
- Make note of your new user name and password since you'll need to enter them each time you start Windows 98/ME.

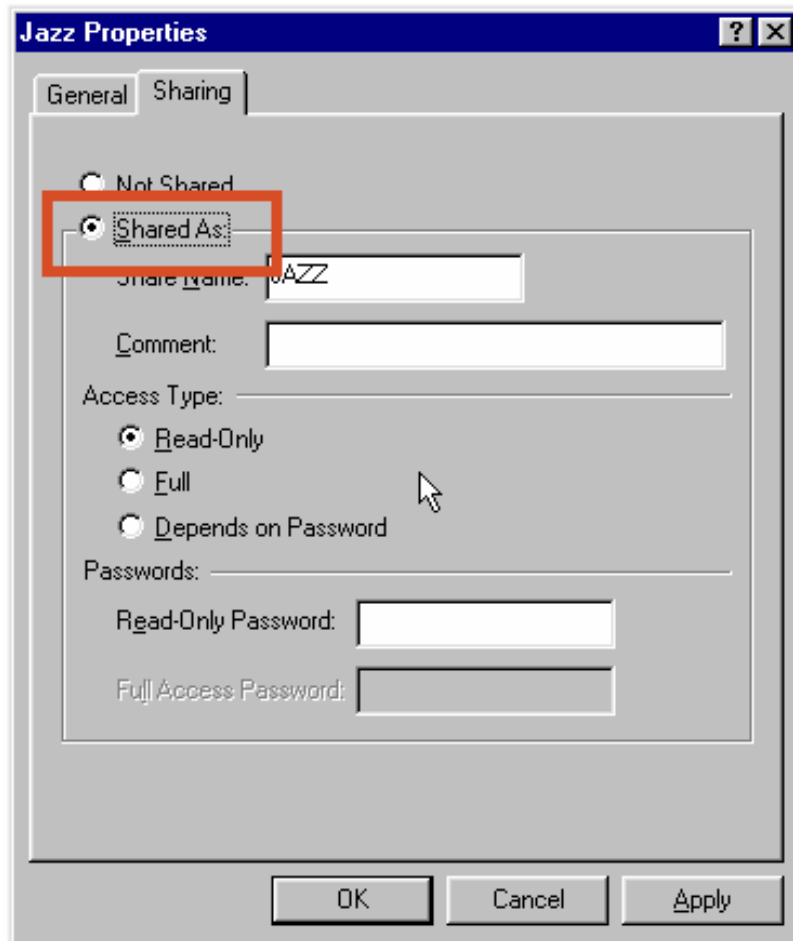
To share a folder using Windows 98/ME:

1. In Windows Explorer or My Computer, select the folder you want to share.

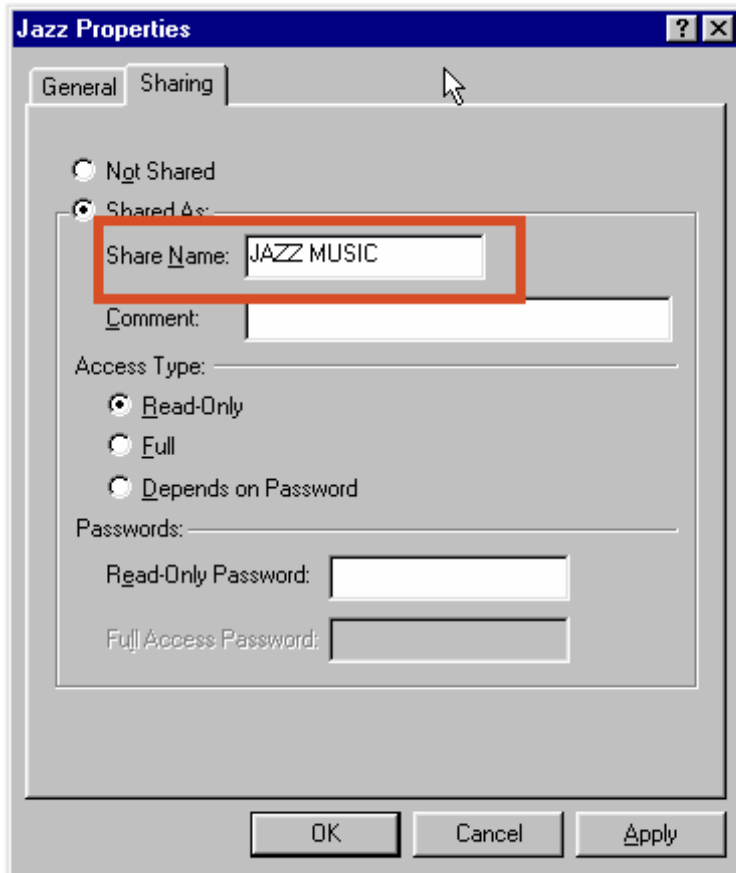
2. Right-click the folder and choose **Sharing...**



3. Select the **Shared As** radio button.



4. Type your desired share name (e.g., “Jazz Music”).
 - This share name displays when accessing this folder from other computers.
 - Share names shouldn't exceed 12 characters including spaces.



5. To allow other users to change the files in your shared folder, select the **Full** radio button.
6. Select **OK**.

A small hand appears underneath the folder to indicate its shared status.

