

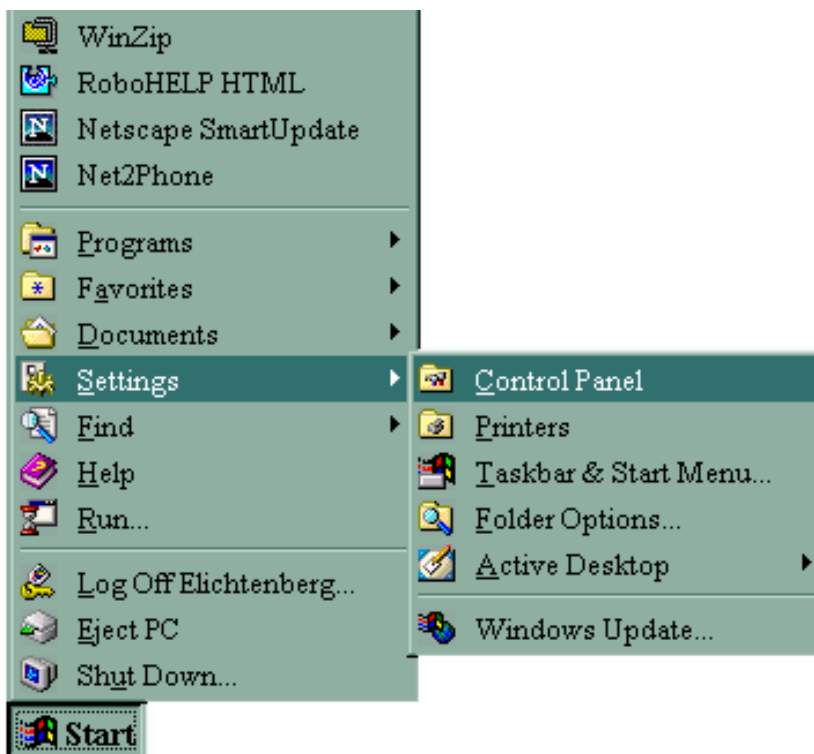
**Qwest® Advanced Networking Modem with Wireless:
2Wire® 2700 HG**

**How to Set Up File Sharing
Enable File and Printer Sharing
Windows® 98/ME**

When you share folders in Windows® 98/ME, all computers connected to the Qwest® Advanced Networking Modem with Wireless: 2Wire® 2700 HG can access the shared folder and its files.

To share a folder using Windows 98/ME, enable file and printer sharing:

1. Select **Start > Settings > Control Panel**.

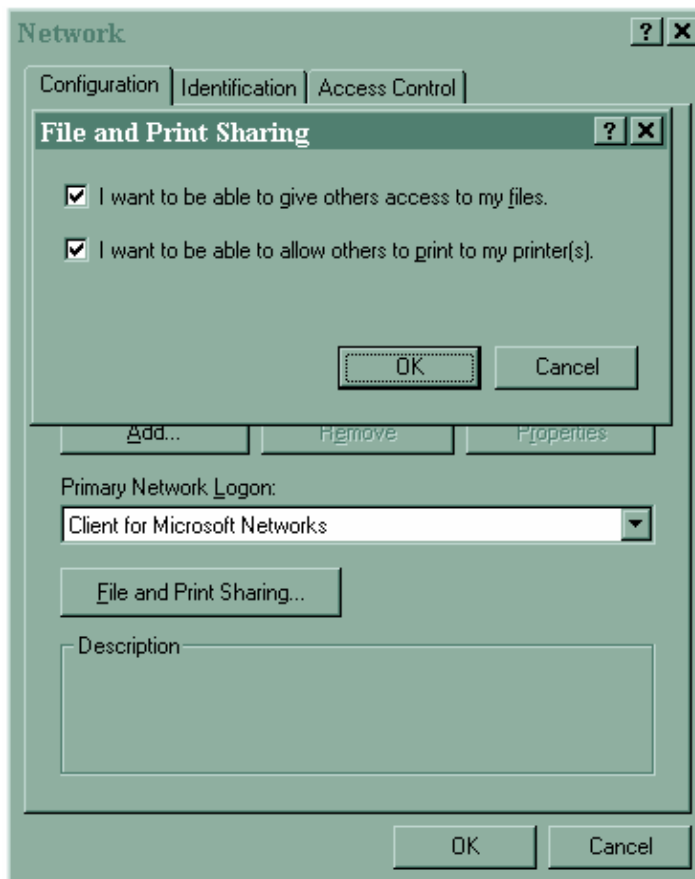


2. Select the **Network** icon.

If you're using Windows ME and you don't see the **Network** icon, select the **View all Control Panel options** link on the left side of the Control Panel window.



3. Select the **File and Print Sharing...** button. Check the "I want to be able to give others access to my files" and "I want to be able to allow others to print to my printer(s)" checkboxes.



4. Select **OK** to close the File and Print Sharing dialog box. Select **OK** to close the Network dialog box.

5. If file and printer sharing isn't already installed on your computer, you'll be prompted to insert your Windows 98/ME operating system CD.



6. When prompted, insert your Windows 98/ME CD, select **OK** and follow the onscreen instructions.

7. If you don't have your Windows CD, search for the needed files in the following locations:

- **C:\Windows\options\cabs**
- **C:\Windows**
- **C:\Windows\system**

