



**Qwest® Advanced Networking Modem with Wireless:
2Wire® 2700 HG**

**How to Set Up File Sharing
Set Up Folders to Share
Windows® 2000**

The following directions for Windows 2000® shared folders allows full access to all other computers connected to the Qwest® Advanced Networking Modem with Wireless: 2Wire® 2700 HG.

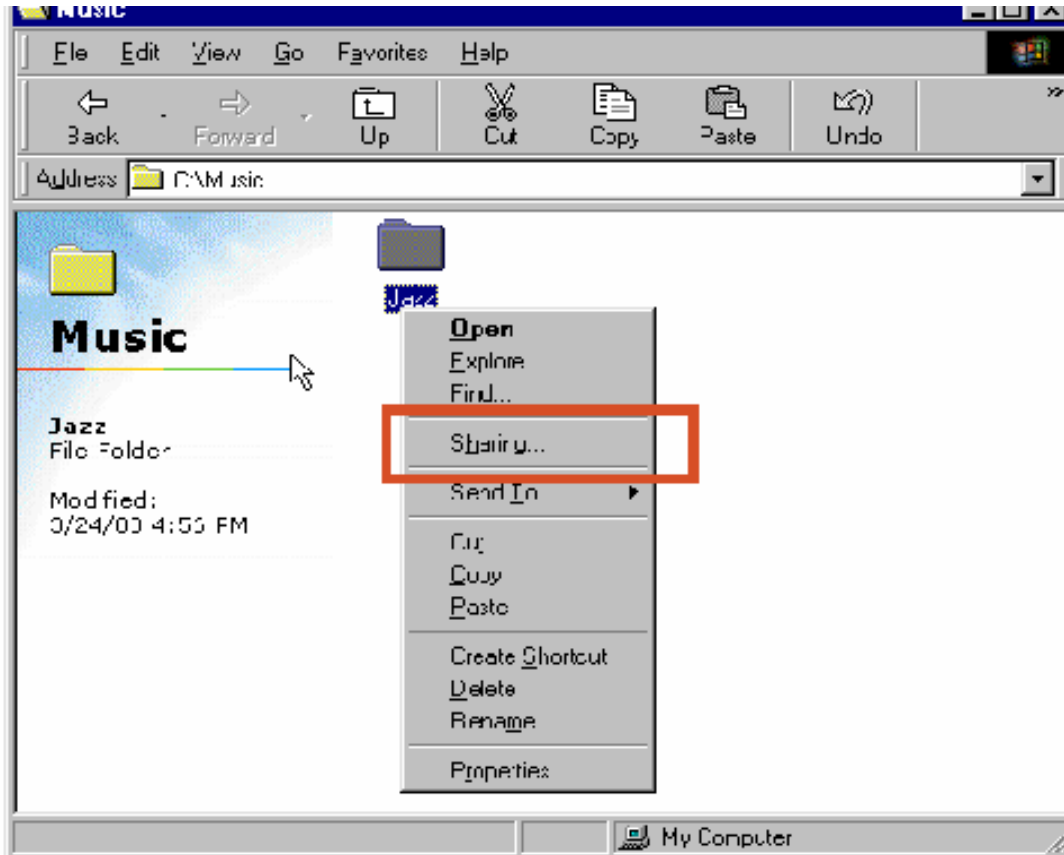
Before shared files are available to all computers on the home network, you must enable the Guest account, which is disabled by default.

- After enabling the Guest account on your Windows 2000 computer, you can set up the folders you want to share.
- The example below demonstrates folder "C:\Music\Jazz" being shared using the share name "Jazz Music."

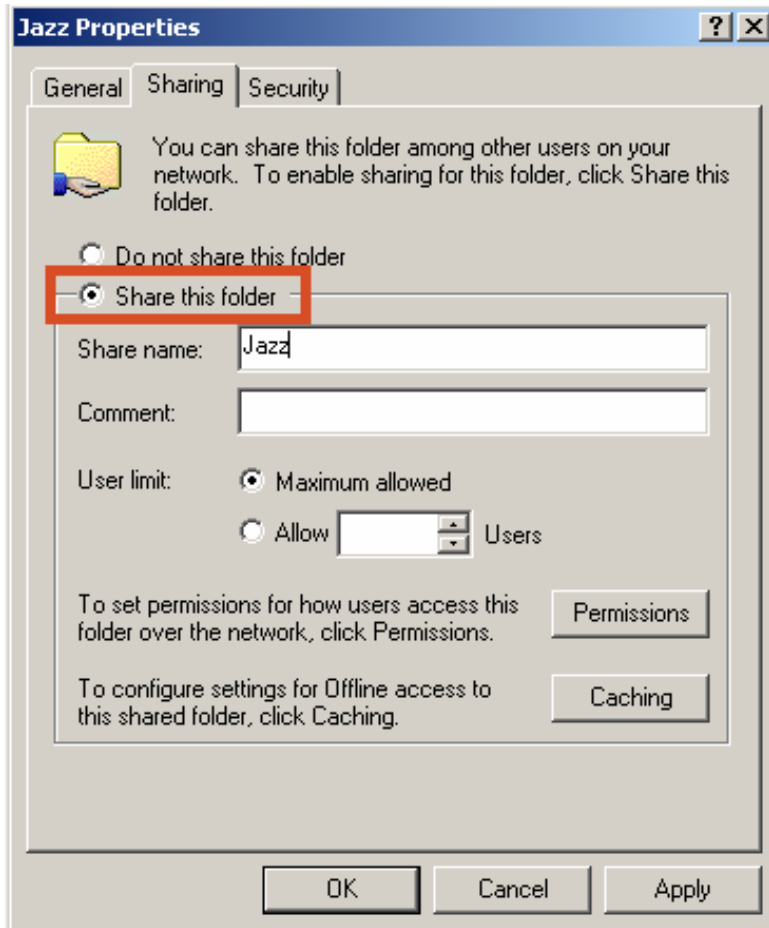
To share a folder using Windows 2000:

1. In Windows Explorer or My Computer, select the folder you want to share.

2. Right-click the folder and choose **Sharing...**

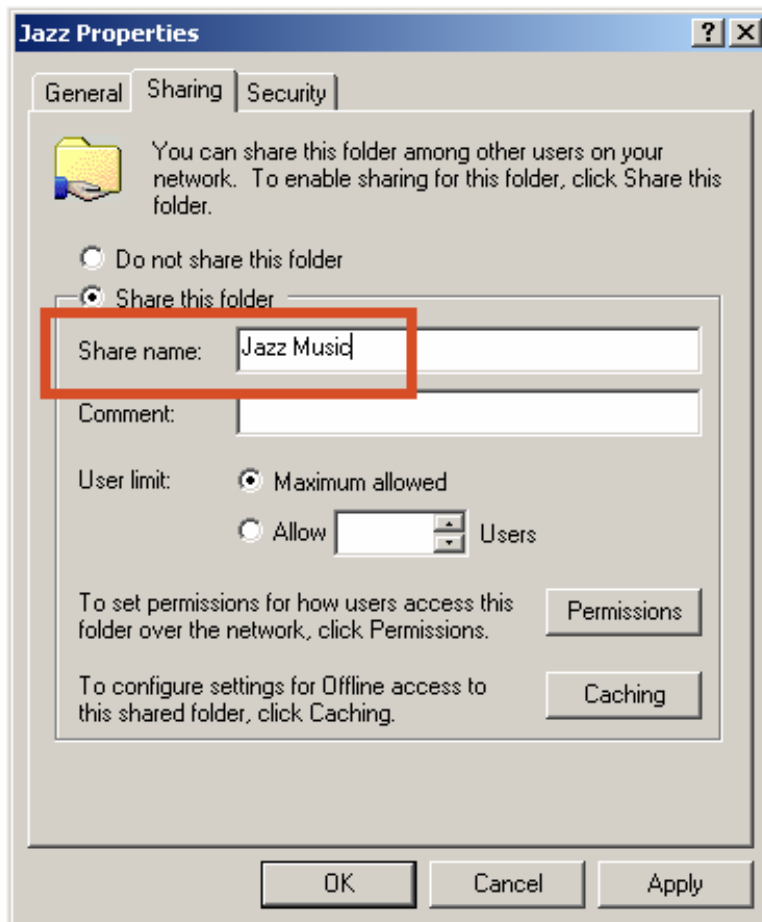


3. Select the **Share this folder** radio button.



4. Type in the desired **Share name** (e.g., “Jazz Music”).

- This **Share name** will be displayed when accessing this folder from other computers.
- Share names should not exceed 12 characters (including spaces).



5. Select **OK**.

A small hand appears underneath the folder to indicate its shared status.

