



**Qwest® Advanced Networking Modem with Wireless:
2Wire® 2700 HG**

**How to Set Up File Sharing
Enable Guest Account
Windows® 2000**

The following directions for Windows® 2000 shared folders allow full access to all other computers connected to the Qwest® Advanced Networking Modem with Wireless: 2Wire® 2700 HG.

Before shared files are available to all computers on the home network, you must enable the Guest account, which is disabled by default.

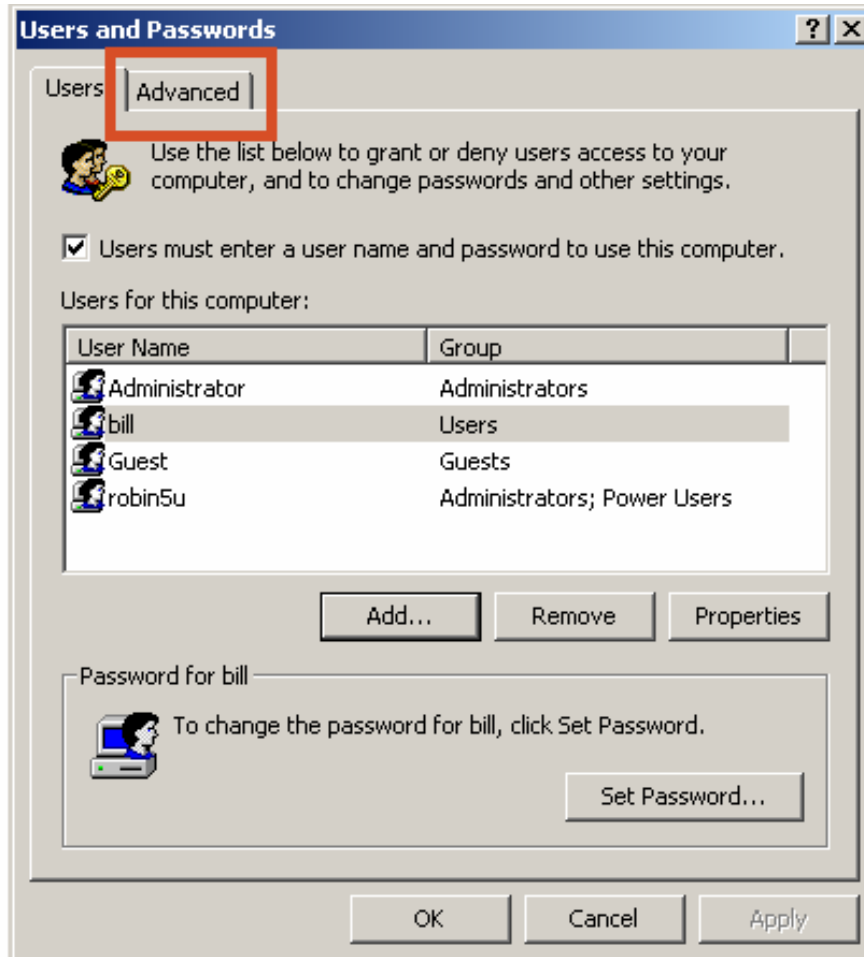
- File sharing will work on a Windows 2000 computer without enabling the Guest user account.
- Windows 2000 utilizes a fully featured user-based file sharing schema, including individual Access Control Lists (ACL).
- The use of Access Control Lists is more advanced and is not included in this basic guide.

To enable the Guest user account:

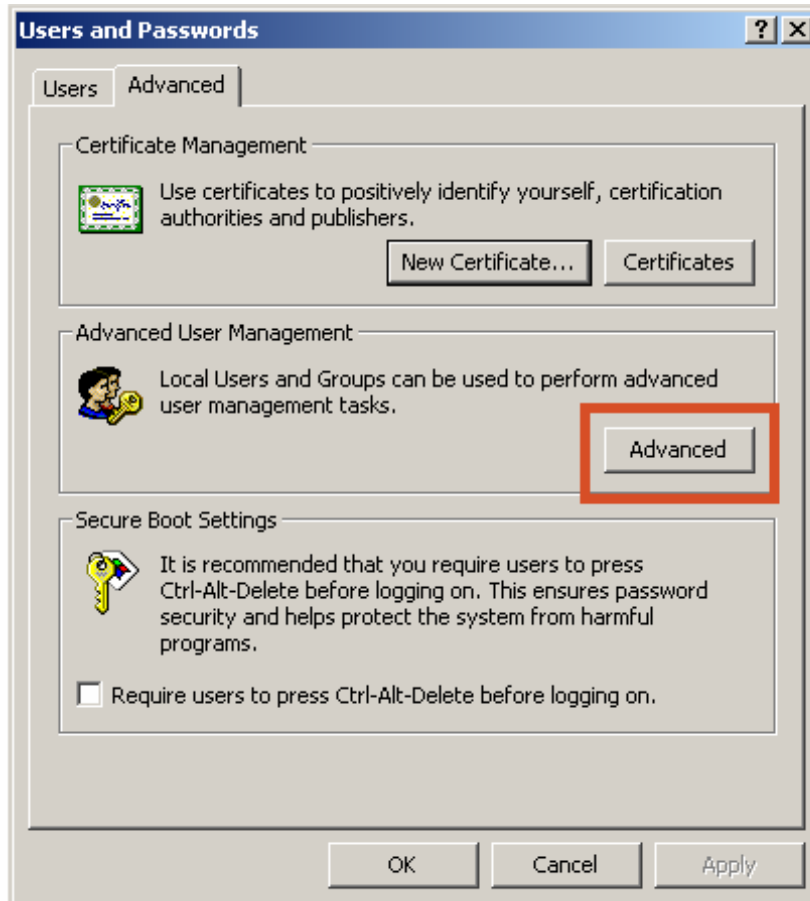
1. Open the **Control Panel** from the “Start” menu. Select the **Users and Passwords** icon.



2. Select the **Advanced** tab.



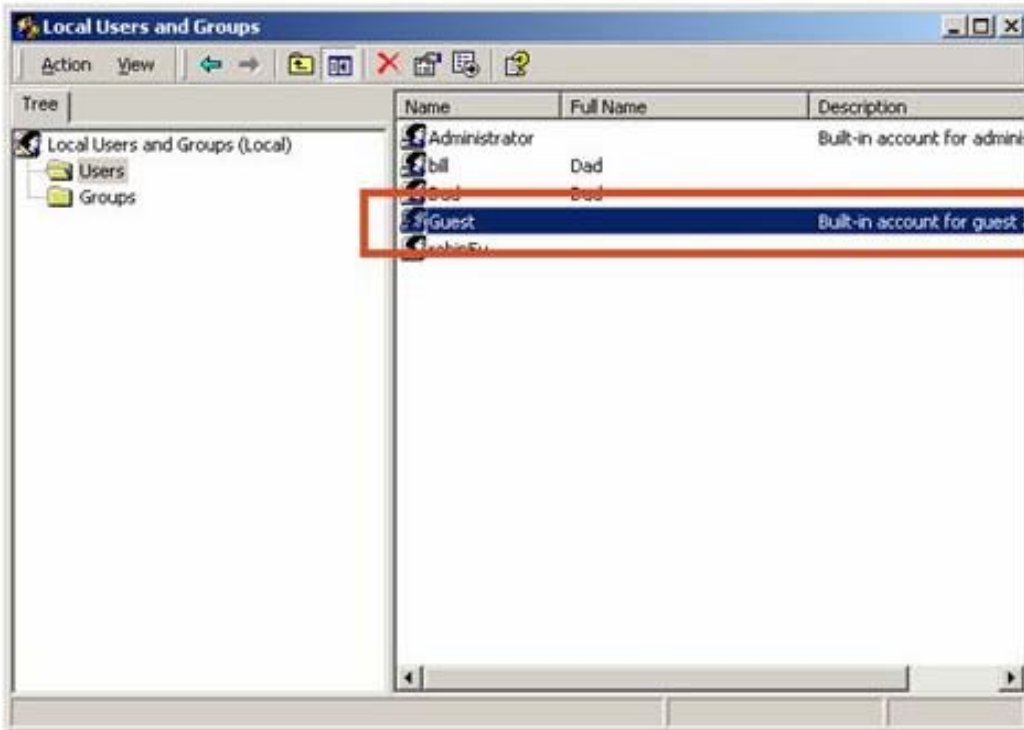
3. Select the **Advanced** button.



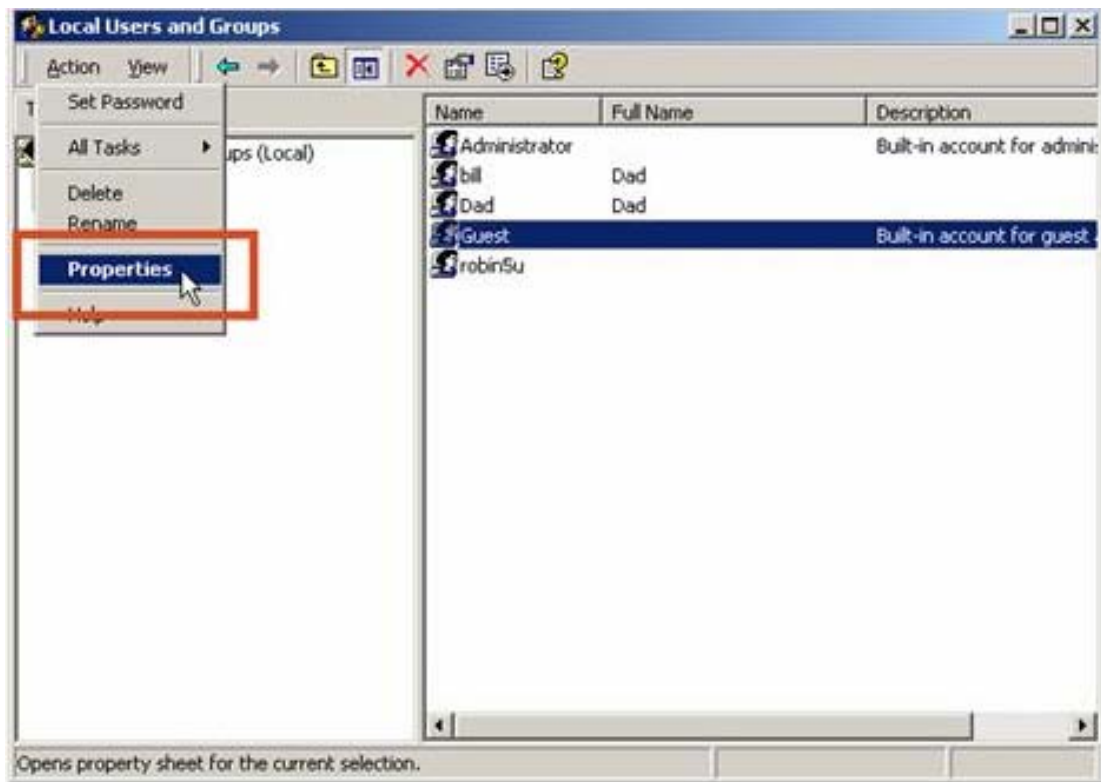
4. The “Local Users and Groups” window opens.

Select the **Users** folder in the left pane of the window, which displays the user list in the right pane.
Select the **Guest** user.

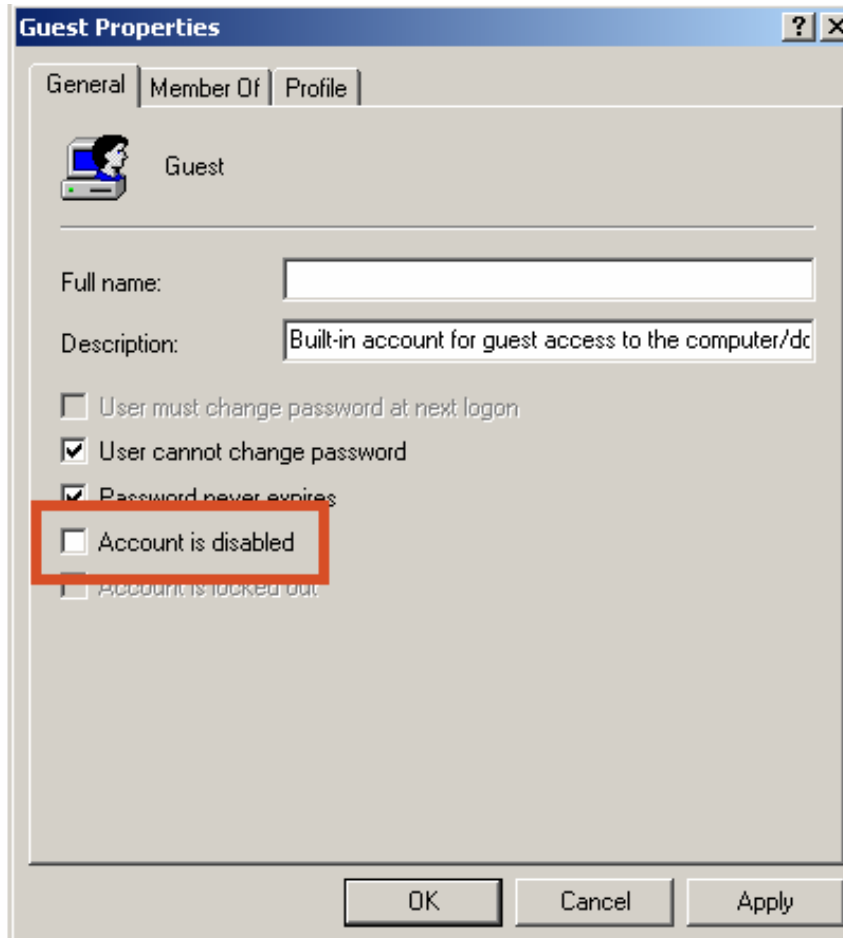
Select the **Guest** user.



5. Select the "Action" menu. Then, select **Properties**.



6. The “Guest Properties” window opens. Uncheck the **Account is disabled** checkbox.



7. Select **OK** and close the remaining open windows.