

**Qwest® Advanced Networking Modem with Wireless:
2Wire® 2700 HG**

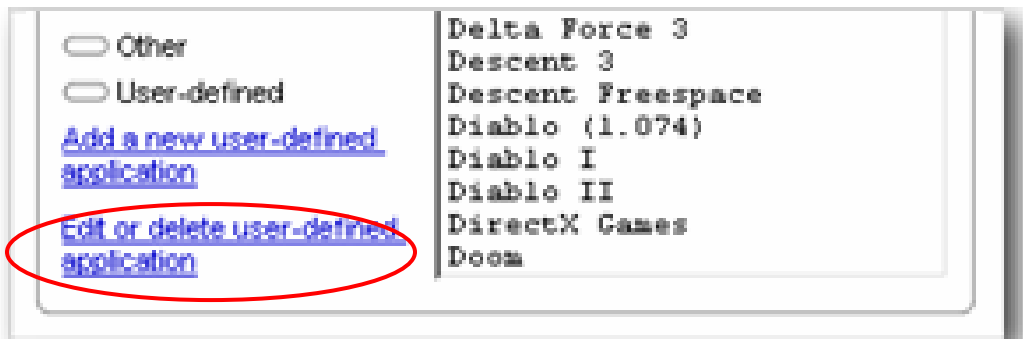
**Firewalls
How to Edit or Delete Application Profiles**

An application profile allows application-specific data to pass through your Qwest® Advanced Networking Modem with Wireless: 2Wire® 2700 HG configured firewall.

You can edit or delete application profiles manually from the firewall “Settings” page.

- Use this to delete applications no longer installed on your home network.
- You cannot modify or delete any pre-defined applications on the list; only applications you've defined.

1. To edit or delete an application profile, select the **Edit or delete a user-defined application** link.

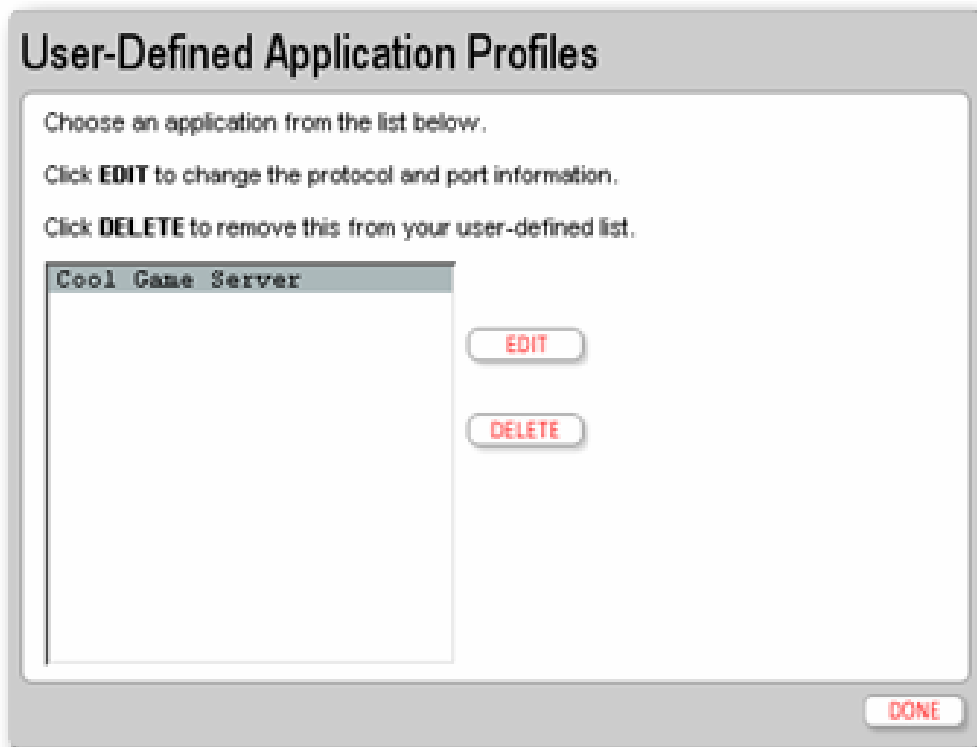


2. To edit application profiles you've created:

- Select the profile from the list.
- Select the **EDIT** button.
- Make selections on the “Edit Application Profile” page.

3. To delete an application profile:

- Select the application profile from the list.
- Select the **DELETE** button.





Qwest® Advanced Networking Modem with Wireless: 2Wire® 2700 HG

Firewalls How to Configure DMZplus

DMZplus, a special firewall mode used for hosting applications, is an alternative to using the “Allow individual application(s)” option, in the event those hosting applications are operating improperly.

Caution: A computer in **DMZplus** mode is less secure because all available ports are open and all incoming Internet traffic is directed to this computer.

You can configure **DMZplus** for only one computer on your home network at a time.

- The “Firewall Settings” page allows you to enable **DMZplus** and select which computer runs in **DMZplus** mode.
- **DMZplus** mode protects your computer using your system firewall, although it’s connected to the Internet directly.
- The firewall’s Stateful Packet Inspection engine inspects all traffic and continues to block known hacker attacks.
- Use the **DMZplus** mode with caution since all filtered traffic is forwarded to the designated computer.
- Use the “Allow individual application(s)” option to support access from Internet applications on your network.

In **DMZplus** mode, the designated computer:

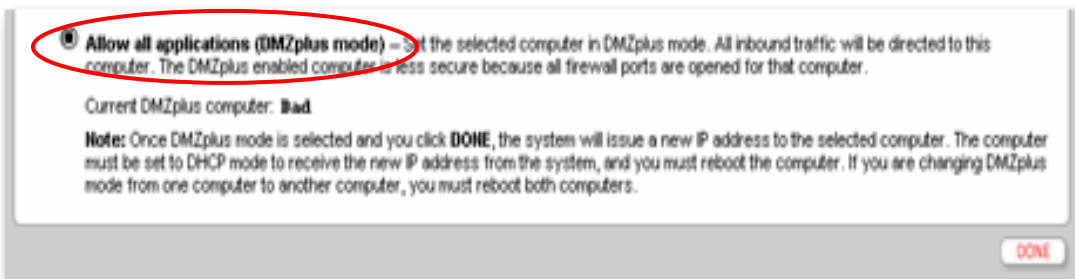
- “Shares” your Router Address (system’s IP address).
- Appears directly connected to the Internet.
- Has all unassigned TCP and UDP ports opened and pointed to it.
- Is able to receive unsolicited network traffic from the Internet.

To configure a computer on your network for **DMZplus** mode:

1. Select the computer from the “Select a computer” drop-down list.



2. Select the **Allow all applications (DMZplus mode)** radio button.



3. Select **DONE**.
4. Access the selected computer and complete **Computer Set Up**.

Computer Set Up

1. Configure the computer for DHCP, if it's not already.
2. **Restart** the computer to receive a special IP address from the system, and to forward all unassigned TCP and UDP ports.



Qwest® Advanced Networking Modem with Wireless: 2Wire® 2700 HG

Firewalls How to Disable DMZplus

To disable **DMZplus** mode for your system:

1. Select the computer on which you want to disable **DMZplus**.
2. Select **Maximum Protection**.
3. Select **DONE**.
4. Access the computer in **DMZplus** mode and complete **Computer Set Up**.

Computer Set Up

1. If the computer continues to obtain an IP address automatically, proceed to Step 3.
2. If the computer has an existing static IP address, create a valid static IP address.
3. **Restart** the computer.



Qwest® Advanced Networking Modem with Wireless: 2Wire® 2700 HG

Firewalls How to Use Advanced Firewall Configuration

Caution:

Only an experienced network administrator with advanced knowledge of firewalls and networking should modify advanced settings.

Advanced firewall configuration allows advanced users to further configure the system software firewall.

- The firewall doesn't automatically allow inbound traffic to pass through to the network.

If a protocol or application type is allowed via the Advanced Configuration settings, the firewall still checks and blocks all unsolicited Internet traffic unless the application profile configures the firewall to allow the traffic.

- Firewall filtering takes precedence over application hosting.

By disabling incoming traffic, you may disable support for hosted applications requiring that type of inbound communication.

1. Select the **Inbound** checkbox to allow the corresponding protocol to pass through the firewall from the Internet to the network.
2. Select the **Outbound** checkbox to allow the traffic from the network to pass through the firewall to the Internet.
3. Select the **SAVE** button for changes to take effect.

Settings

Security

Check to enable the features below:

Stealth Mode	<input type="checkbox"/>
Strict UDP Session Control	<input type="checkbox"/>

Inbound and Outbound Control

Checking the box allows the associated traffic type through the firewall.

Outbound

HTTP	<input type="checkbox"/>
HTTPS	<input type="checkbox"/>
FTP	<input type="checkbox"/>
Telnet	<input type="checkbox"/>
SMTP	<input type="checkbox"/>
DNS	<input type="checkbox"/>
POP3	<input type="checkbox"/>
IMAP	<input type="checkbox"/>
NNTP	<input type="checkbox"/>
IRC	<input type="checkbox"/>
H323	<input type="checkbox"/>
All Other Protocols	<input type="checkbox"/>

Inbound

Remote Management	<input type="checkbox"/>
Remote Configuration	<input type="checkbox"/>

SAVE

CANCEL