



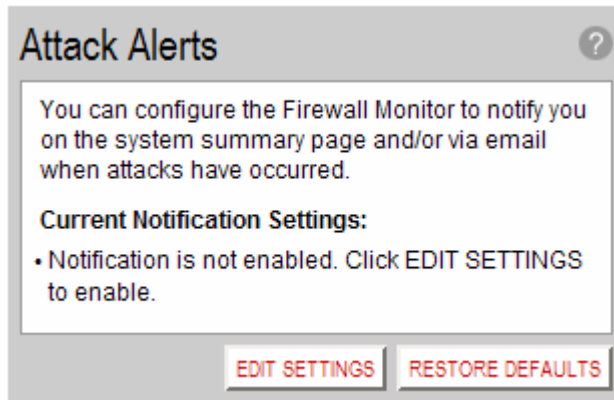
## Qwest® Advanced Networking Modem with Wireless: 2Wire® 2700 HG

### Firewall Monitor How to Restore Defaults

The Qwest® Advanced Networking Modem with Wireless: 2Wire® 2700 HG Firewall Monitor enhanced service extends the professional-grade firewall capabilities of your wireless gateway by continuously assessing threats to your home network.

The Firewall Monitor service appears as an option on your Qwest Advanced Networking Modem with Wireless (2Wire 2700 HG) home page.

To restore default settings for Attack Notification and E-mail Notification, select the **RESTORE DEFAULTS** button in the “Attack Alerts” area of the “Monitor the Firewall” page.





## Qwest® Advanced Networking Modem with Wireless: 2Wire® 2700 HG

### Firewall Monitor How to View Firewall Monitor Attack Alerts

The Qwest® Advanced Networking Modem with Wireless: 2Wire® 2700 HG Firewall Monitor enhanced service extends the professional-grade firewall capabilities of your wireless gateway by continuously assessing threats to your home network.

The Firewall Monitor service appears as an option on your Qwest Advanced Networking Modem with Wireless (2Wire 2700 HG) home page.

After enabling alert notification, if your network firewall is attacked, an attack notice appears on your Qwest® Advanced Networking Modem with Wireless: 2Wire® 2700 HG home page.

#### How to View Top Attackers

The Top Attackers area of the “Monitor the Firewall” page displays the IP address and each top attacker’s domain.

IP Address	Attacker Domain	Total Number of Attacks			
		High Risk	Med Risk	Low Risk	
192.168.1.65	AUNTIE	0	0	1252	<a href="#">View attack details</a>
192.168.1.93	Not available	0	0	27	<a href="#">View attack details</a>

## How to View Attack Details

Attackers are ranked based on the number and severity of attacks. For details of a particular top attacker, select the **View attack details** link.

### View Attack Details

Details <span style="float: right;">?</span>		
Internet Domain:	AUNTIE	
Internet Address:	192.168.1.65	
	Today	This Week
<b>Total Attacks Blocked</b>	<b>54</b>	<b>54</b>
<b>High Risk</b>	<b>0</b>	<b>0</b>
<b>Med Risk</b>	<b>0</b>	<b>0</b>
<b>Low Risk</b>	<b>54</b>	<b>54</b>
Invalid IP source received from private/home network, Packet Dropped	54	54

The “View Attack Details” page displays the total attacks blocked, the number of each attack type, and attack by day and week:

- **High risk attacks** - Indicates blocked attacks representing a serious attacker attempt to disable your network.
- **Medium risk attacks** - Indicates blocked attacks representing a modest level of attacker intent to disable your network.
- **Low risk attacks** - Indicates blocked attacks representing no serious threat to the network. Most are probing attacks used by hackers to determine a network where they can conduct a more serious attack.

When finished viewing the log, select the browser **BACK** button.



**Qwest® Advanced Networking Modem with Wireless:  
2Wire® 2700 HG**

**Firewall Monitor  
How to Manage the Attacks Blocked Area**

The Qwest® Advanced Networking Modem with Wireless: 2Wire® 2700 HG Firewall Monitor enhanced service extends the professional-grade firewall capabilities of your wireless gateway by continuously assessing threats to your home network.

The Firewall Monitor service appears as an option on your Qwest Advanced Networking Modem with Wireless (2Wire 2700 HG) home page.

The Attacks Blocked area of the “Monitor the Firewall” page displays summary information about all high, medium, and low risk attacks blocked today and this week.

	Today	This Week
<b>Total Number of Attacks</b>	<b>802</b>	<b>1279</b>
<b>High Risk</b>	0	0
<b>Med Risk</b>	0	0
<b>Low Risk</b>	802	1279
Invalid IP source received from private/home network, Packet Dropped	802	1279

[VIEW LOG](#)

To view details about the blocked attacks:

1. Select **VIEW LOG**.

2. The “View Firewall Log” page opens.

## View Firewall Log

Log <span style="float: right;">?</span>		
Date and Time	Severity	Details
2005/01/12 17:31:16 PST	info	src=10.4.254.208 dst=10.0.255.255 ipprot=17 sport=2190 dport=2190 Unknown inbound session stopped
2005/01/12 17:32:14 PST	low	src=192.168.1.65 dst=192.168.1.255 ipprot=17 sport=137 dport=137 Invalid IP source received from private/home network, Packet Dropped
2005/01/12 17:32:16 PST	info	Previous log entry repeated 2 times
2005/01/12 17:32:16 PST	info	src=10.4.254.208 dst=10.0.255.255 ipprot=17 sport=2190 dport=2190 Unknown inbound session stopped
2005/01/12 17:32:18 PST	low	src=192.168.1.65 dst=192.168.1.255 ipprot=17 sport=137 dport=137 Invalid IP source received from private/home network, Packet Dropped
2005/01/12 17:32:18 PST	low	src=192.168.1.65 dst=192.168.1.255 ipprot=17 sport=138 dport=138 Invalid IP source received from private/home network, Packet Dropped
2005/01/12 17:33:16 PST	info	src=10.4.254.208 dst=10.0.255.255 ipprot=17 sport=2190 dport=2190 Unknown inbound session stopped
2005/01/12 17:34:16 PST	info	src=10.4.254.208 dst=10.0.255.255 ipprot=17 sport=2190 dport=2190 Unknown inbound session stopped
2005/01/12 17:34:35 PST	info	src=10.4.253.243 dst=10.4.254.204 ipprot=6 sport=3355 dport=445 Unknown inbound session stopped
2005/01/12 17:34:36 PST	info	Previous log entry repeated 2 times
2005/01/12 17:52:09 PST	low	src=192.168.1.65 dst=192.168.1.255 ipprot=17 sport=138 dport=138 Invalid IP source received from private/home network, Packet Dropped
2005/01/12 17:52:18 PST	info	src=10.4.254.208 dst=10.0.255.255 ipprot=17 sport=2190 dport=2190 Unknown inbound session stopped
2005/01/12 17:52:39 PST	low	src=192.168.1.65 dst=192.168.1.255 ipprot=17 sport=137 dport=137 Invalid IP source received from private/home network, Packet Dropped

[CLEAR LOG](#)

3. To clear the log, select **CLEAR LOG**.

4. To return to the “Monitor the Firewall” page, select your browser **BACK** button.



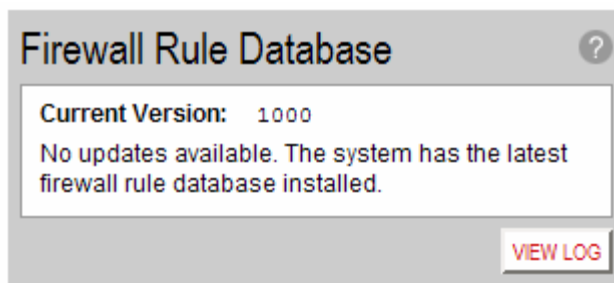
## Qwest® Advanced Networking Modem with Wireless: 2Wire® 2700 HG

### Firewall Monitor How to Manage the Firewall Rule Database

The Qwest® Advanced Networking Modem with Wireless: 2Wire® 2700 HG Firewall Monitor enhanced service extends the professional-grade firewall capabilities of your wireless gateway by continuously assessing threats to your home network.

The Firewall Monitor service appears as an option on your Qwest Advanced Networking Modem with Wireless (2Wire 2700 HG) home page.

The Firewall Rule Database area of the “Monitor the Firewall” page displays the current firewall rules version running on your Qwest® Advanced Networking Modem with Wireless: 2Wire® 2700 HG system.



1. Select **VIEW LOG** to display the firewall rule database update log.

## View Firewall Rule Database Update Log

Log

Date and Time	Version
November 8, 2004 05:31:50 PM PST	1000

The upgrade log displays the following information about new downloaded rules:

- **Date and time**
- **Version**



2. When finished viewing the log, select your browser **BACK** button.

After setting up the Firewall Monitor service, updated firewall rules download automatically to your Qwest Advanced Networking Modem with Wireless: 2Wire 2700 HG. Typically, the Firewall Monitor application checks for new updates every 24 hours.