

**Qwest® Wireless USB Adapter:  
2Wire®**

**How to Install and Configure Drivers  
New Installation Only**

**Windows® XP and Windows 2000**



**Use this document if:**

- You want to install and configure your Qwest Wireless USB Adapter: 2Wire drivers to work with your 2Wire modem.

**This document assumes:**

- You use the Qwest Wireless USB Adapter: 2Wire.
- You use the Windows XP or Windows 2000 operating system.
- You have not installed any versions of your adapter driver software previously.
  - If you have already used the driver software supplied on the CD, do not reinstall the driver software (do not use these instructions).
- Your adapter is NOT currently connected to your computer. (Instructions for when you should connect it are included in this document.)

The four-part driver update process requires you to:

1. Download the driver file.
2. Extract the file.
3. Install the update.
4. Install the 2Wire Client Manager.

**Part 1:  
Download the Driver File**

1. Confirm your Qwest Wireless USB Adapter: 2Wire is not connected to your computer.
2. Select the appropriate **Download File** link from the Qwest Internet Help page, based on your operating system.
3. Select **Save**.
4. Select **Desktop** in the "Save in" drop-down box. Then, select **Save**.
5. Confirm you can see the appropriate driver file on your desktop (based on your operating system).  
The file name will be:

**2Wire\_XP32USBdriver\_Install**

- OR -

**2Wire\_Win2KUSBdriver\_Install**

## Part 2: Extract the Driver Files

1. Double-click the appropriate driver file (based on your operating system), to open it.

### Windows XP



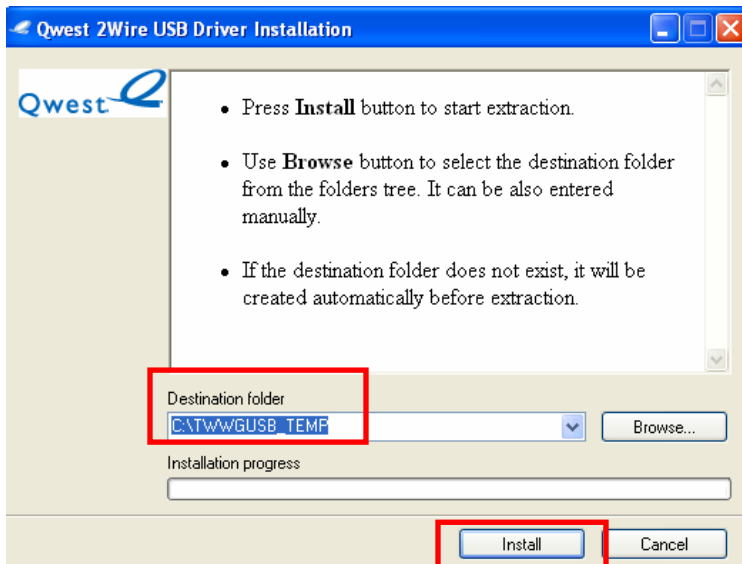
- OR -

### Windows 2000



2. A window will appear, showing you that the files will be placed in the default folder on your computer (the C:\TWWGUSB\_TEMP directory).

Select the **Install** button to extract the files.

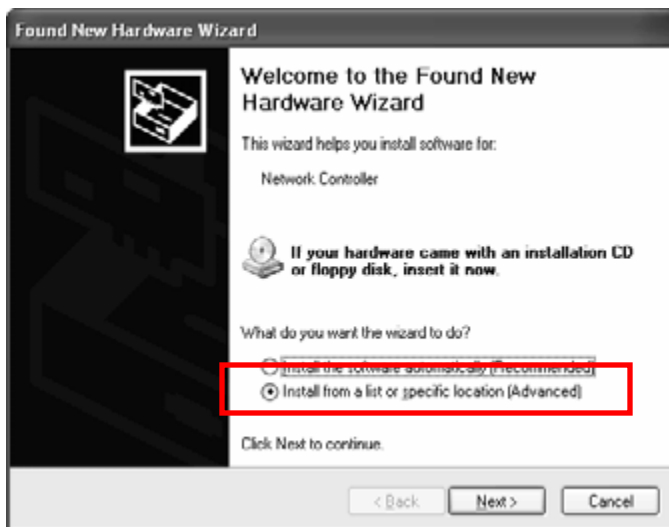


### Part 3: Install the Driver

Now that you've extracted the files, you're ready to install the driver.

1. Connect your Qwest Wireless USB Adapter: 2Wire to an available USB port on your computer.
2. The Windows **Found New Hardware** wizard will start automatically.

Select **Install from a list or specific location (Advanced)**.

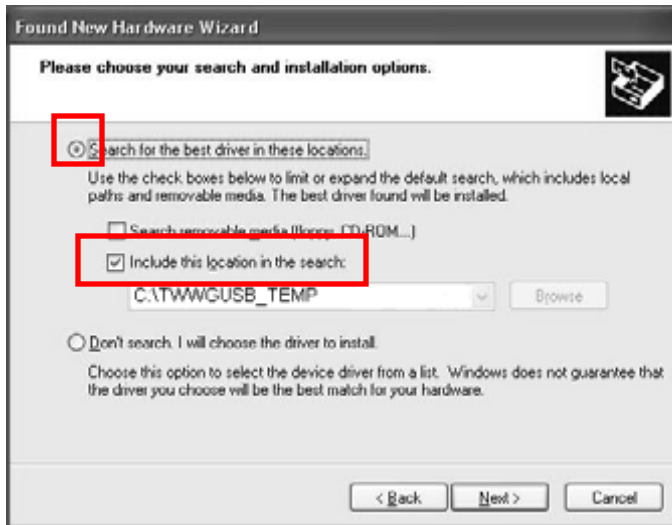


3. Select **Next**.

4. Select the **Search for driver software in this location:** radio button.

Select the **Include this location in the search** check box.

Confirm C:\TWWGUSB\_TEMP appears in the drop-down box. If not, use the **Browse** button to find and select it as the location of the driver.



5. Select **Next**.

6. Follow the on-screen instructions to complete the driver installation.

**Part 4:**  
**Install the 2Wire Client Manager**

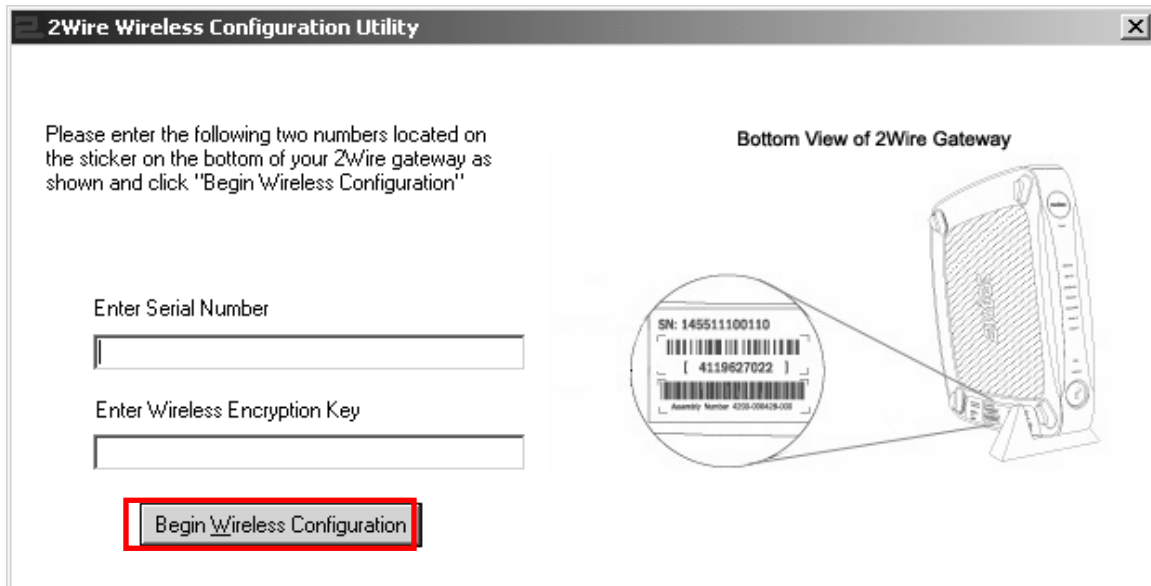
1. Locate the C:\TWWGUSB\_TEMP folder and double-click to open it.



2. Double-click the **Setup** icon.



3. The 2Wire Wireless Manager will install automatically.
4. Enter the **Serial Number** and **Wireless Encryption Key** (located on the bottom of your modem) in the appropriate fields. Then, select **Begin Wireless Configuration**.

A screenshot of the "2Wire Wireless Configuration Utility" window. The window title is "2Wire Wireless Configuration Utility". The main text reads: "Please enter the following two numbers located on the sticker on the bottom of your 2Wire gateway as shown and click 'Begin Wireless Configuration'". Below this text are two input fields: "Enter Serial Number" and "Enter Wireless Encryption Key". At the bottom of the window is a button labeled "Begin Wireless Configuration", which is highlighted with a red border. To the right of the input fields is a diagram titled "Bottom View of 2Wire Gateway" showing a modem with a circular callout highlighting a sticker. The sticker contains the following information: "SN: 14551100110", a barcode, "[ 419627022 ]", and "Assembly Number 420-08428-000".