

**Qwest® Wireless USB Adapter:  
2Wire®**

**How to Install and Configure Drivers  
New Installation Only**

**Windows Vista™ 32-Bit Version**



**Use this document if:**

- You want to install and configure your Qwest Wireless USB Adapter: 2Wire drivers to work with your modem.

**This document assumes:**

- You use the Qwest Wireless USB Adapter: 2Wire.
- You use the Windows Vista 32-bit operating system.
- You have not previously installed any versions of your adapter driver software.
  - If you have already used the driver software supplied on the CD, do not reinstall the driver software (do not use these instructions).
- Your adapter is NOT currently connected to your computer. (Instructions for when you should connect it are included in this document.)

The four-part driver update process requires you to:

1. Download the driver file.
2. Extract the file.
3. Install the update.
4. Install the 2Wire Client Manager.



**Part 1:  
Download the Driver File**

1. Confirm your Qwest Wireless USB Adapter: 2Wire is not connected to your computer.
2. Select the **Download File** link from the Qwest Internet Help page.
3. Select **Save**.
4. Select **Desktop** in the "Save in" drop-down box. Then, select **Save**.
5. Confirm you can see the driver file on your desktop. The file name is:

**2Wire\_Vista32USBdriver\_Install**

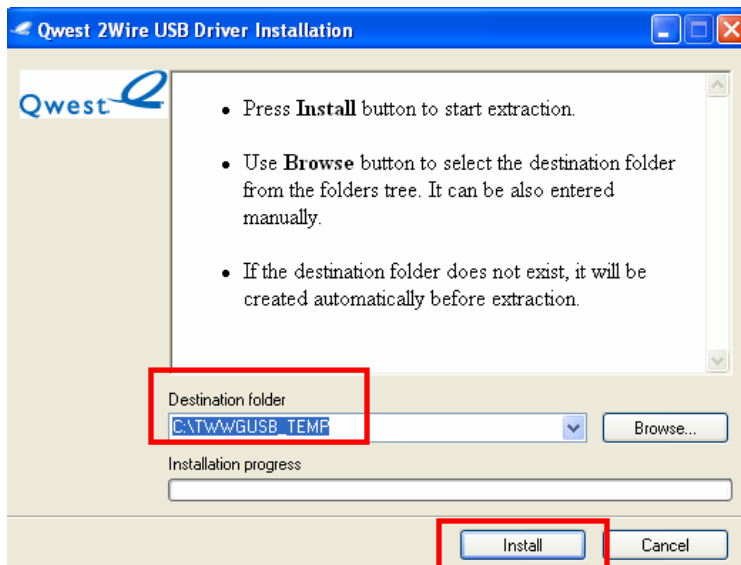
## Part 2: Extract the Driver Files

1. Double-click the **2Wire\_Vista32USBdriver\_Install.exe** file to open it.



2. A window will appear, showing you that the files will be placed in the default folder on your computer (the C:\TWWGUSB\_TEMP directory).

Select the **Install** button to extract the files.

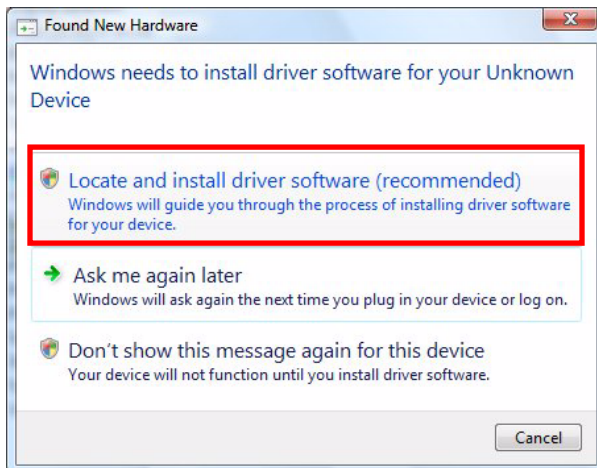


### Part 3: Install the Driver

Now that you've extracted the files, you're ready to install the driver.

1. Connect your Qwest Wireless USB Adapter: 2Wire to an available USB port on your computer.
2. The Windows **Found New Hardware** wizard will start automatically.

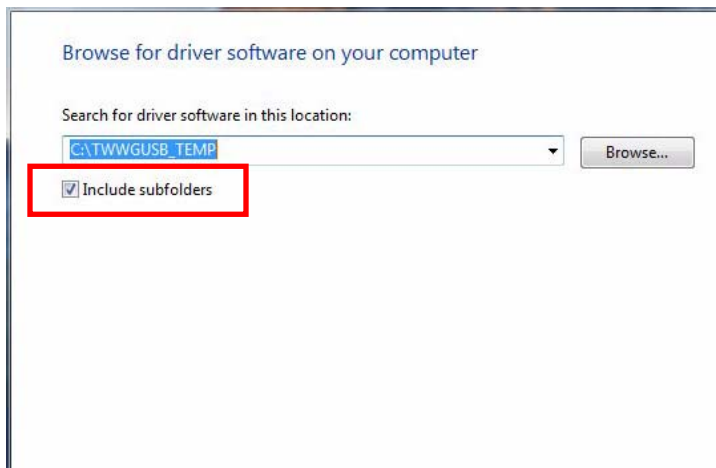
Select **Locate and install driver software (recommended)**.



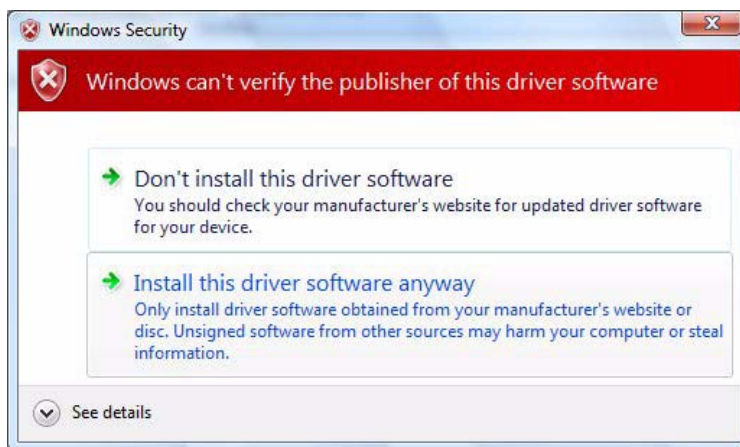
3. Select **Next**.

4. Confirm C:\TWWGUSB\_TEMP appears in the **Search for driver software in this location:** drop-down box. If not, use the **Browse** button to find and select it as the location of the driver.

Select the **Include Subfolders** check box.



5. Select **Next**.
6. Follow the on-screen instructions to complete the driver installation.
7. A "Windows Security" page will display. If acceptable to you, select **Install this driver software anyway**.

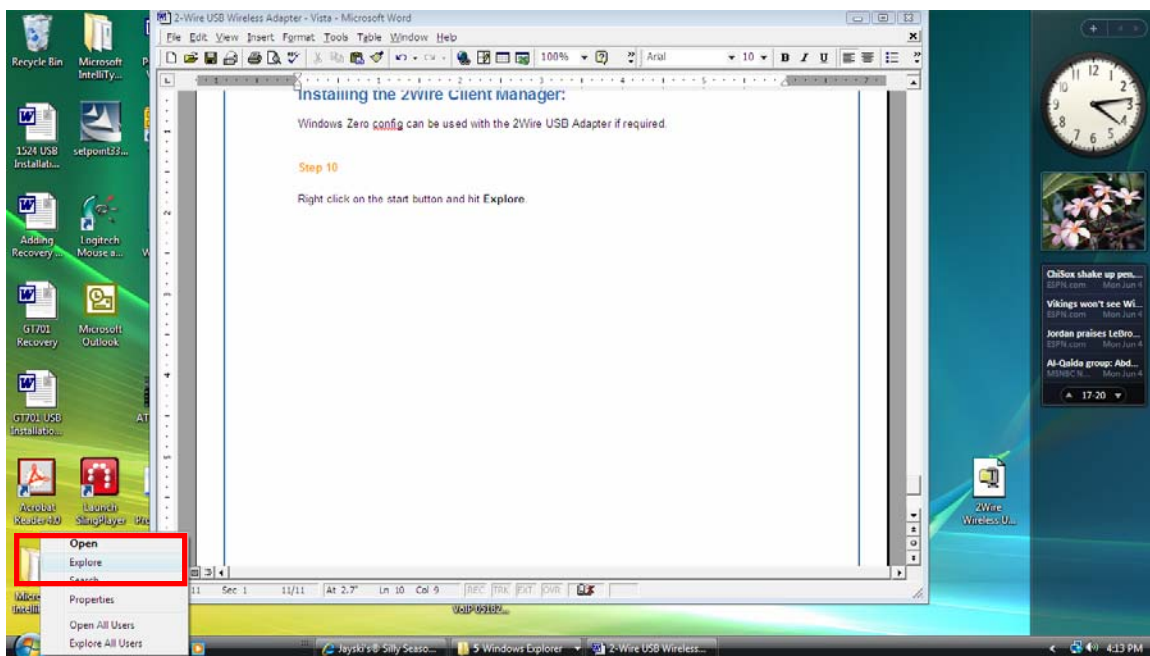


## Part 4: Install the 2Wire Client Manager

We recommend using the following instructions to configure your Qwest Wireless USB Adapter: 2Wire.

Note: As an alternative, you may choose to use the “WLAN Auto Config” utility in Windows Vista to configure your adapter. The instructions for using that utility are not provided in this document.

1. Right-click on the **Start** button and select **Explore**.



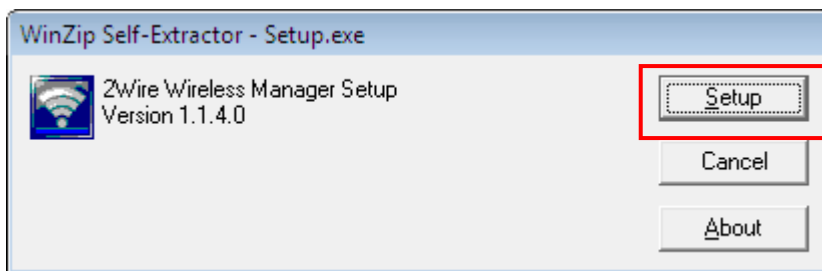
2. Locate the C:\TWWGUSB\_TEMP folder and double-click to open it.



3. Double-click the **Setup** icon.



4. On the "WinZip Self-Extractor – Setup.exe" page, select the **Setup** button.



5. The 2Wire Wireless Manager will install automatically.
6. Enter the modem Serial Number and Wireless Encryption Key (located on the bottom of your modem) in the appropriate fields.

Then, select **Begin Wireless Configuration**.

