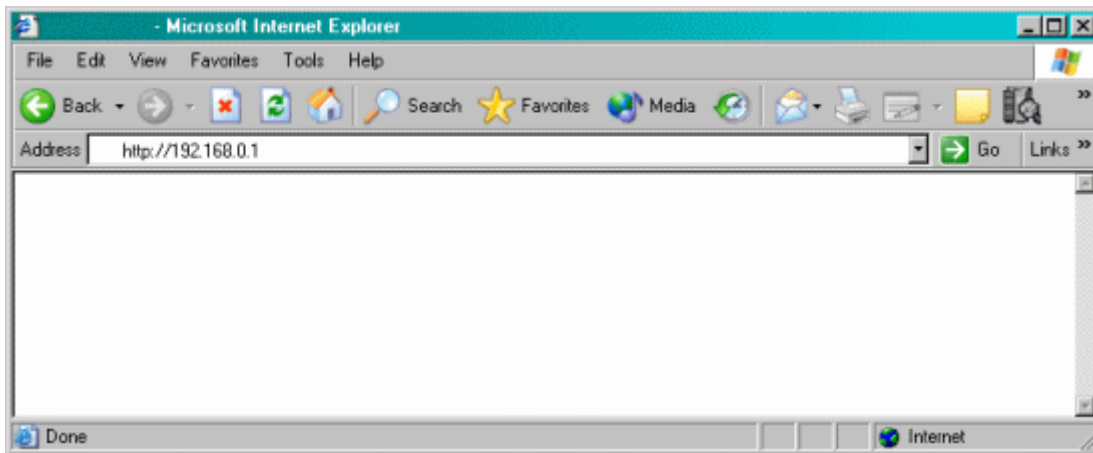


Actiontec® GT-701-wg
How to Configure Port Forwarding

*Only experienced network administrators should perform this process.
Qwest® DSL technical support does not support this process.*

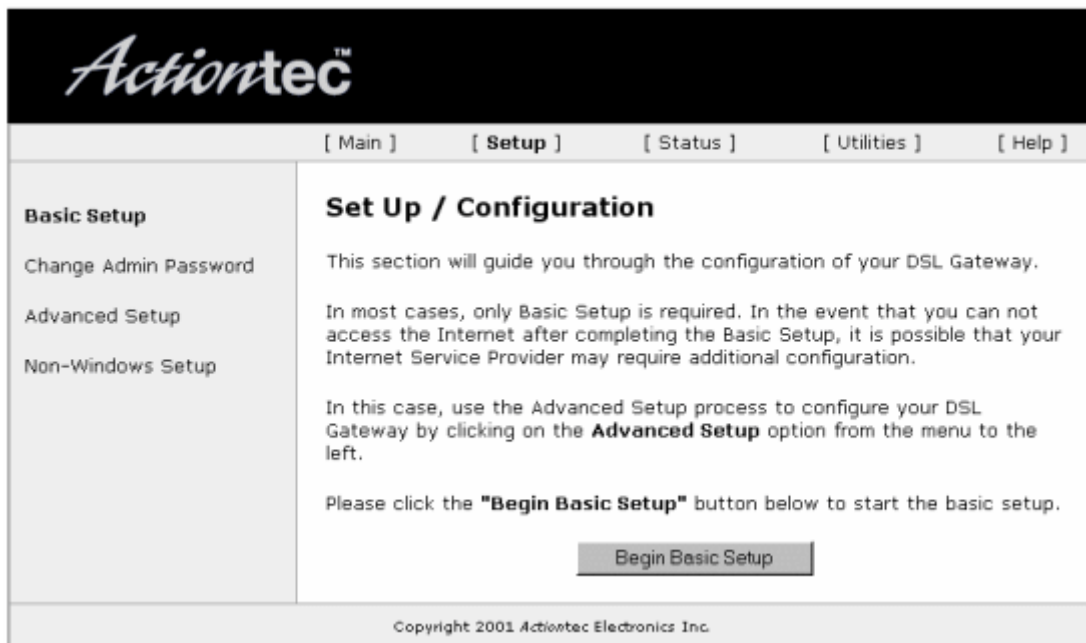
1. Open your Web browser (Internet Explorer or Netscape). In the location or address bar, type **192.168.0.1**. Then select **Enter**.



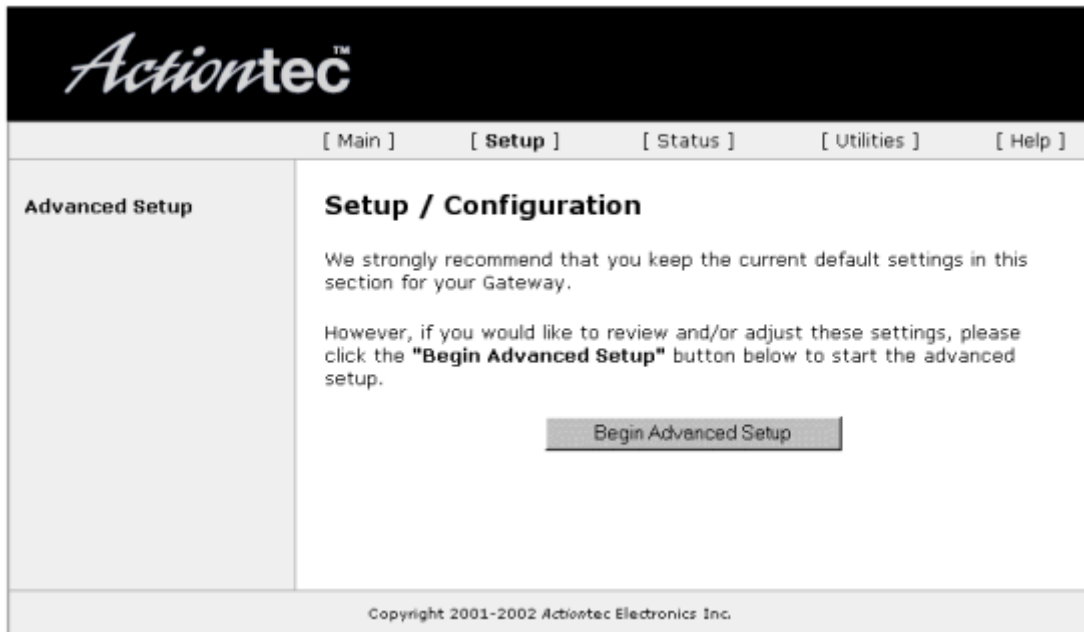
2. Select **Setup/Configuration**.



3. Select **Advanced Setup**.



4. Select the **Begin Advanced Setup** button.



5. Select **Port Forwarding** on the left.

Type in the port and/or port ranges you want to forward.

Select the protocol type, then type in the IP Address of the PC that should be able to use those ports.

Select **Add** and it should display in the white box.

Select **Next**.

Select **Save and Restart** in the bottom left.

The screenshot shows the Actiontec router's web interface. At the top, the Actiontec logo is displayed. Below it, a navigation bar contains links for [Main], [Setup], [Status], [Utilities], and [Help]. The left sidebar is titled "Advanced Setup" and lists various configuration options: WAN IP Address, Wireless Settings, LAN IP Address, DHCP Server, Services Blocking, Website Blocking, VPN Pass Through, Remote Management, Port Forwarding (which is highlighted), DMZ Hosting, Firewall, Dynamic Routing, NAT, Static Routing, and MAC Address Cloning. At the bottom of the sidebar is a "Save and Restart" button. The main content area is titled "Port Forwarding" and includes the instruction: "Please enter ports and port ranges, that some internet applications require to be forwarded, in the spaces below." Below this instruction are three input fields: "IP Port Range" (with a "to" separator), "Protocol" (a dropdown menu currently set to "TCP"), and "IP Address". There are "Add" and "Remove" buttons below these fields. A "List of Forwarded Ports" table is shown below, which is currently empty. To the right of the table is an "Advanced ..." button. At the bottom of the table are "Back" and "Next" buttons. The footer of the page contains the copyright notice: "Copyright 2001-2002 Actiontec Electronics Inc."

6. Then select the **Save and Restart** button. This will reboot the router with the new settings.



7. When the power LED light stops flashing, the configuration is complete.

