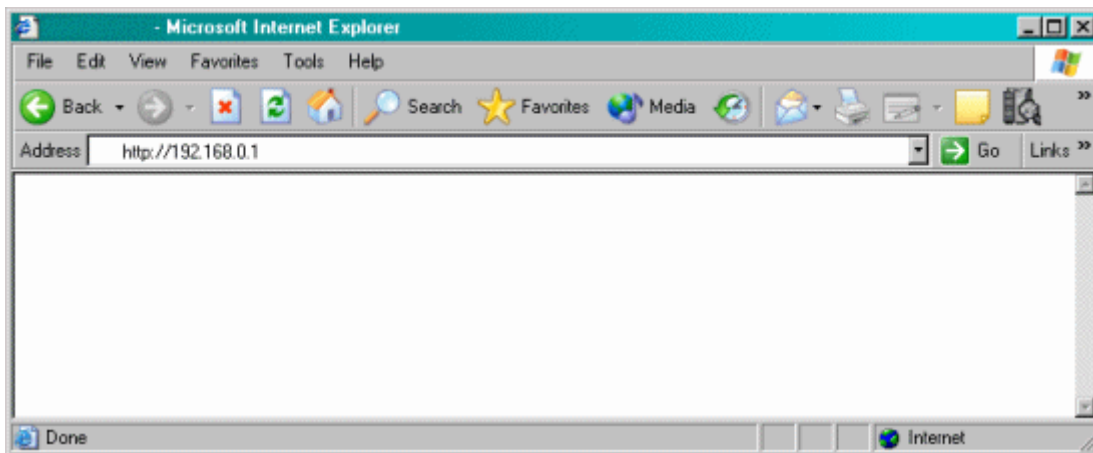


**Actiontec® Wireless-Ready DSL Gateway
Model GT701-wg**

How to Configure Port Forwarding

*Only experienced network administrators should perform this process.
Qwest® High-Speed Internet Technical Support doesn't support this process.*

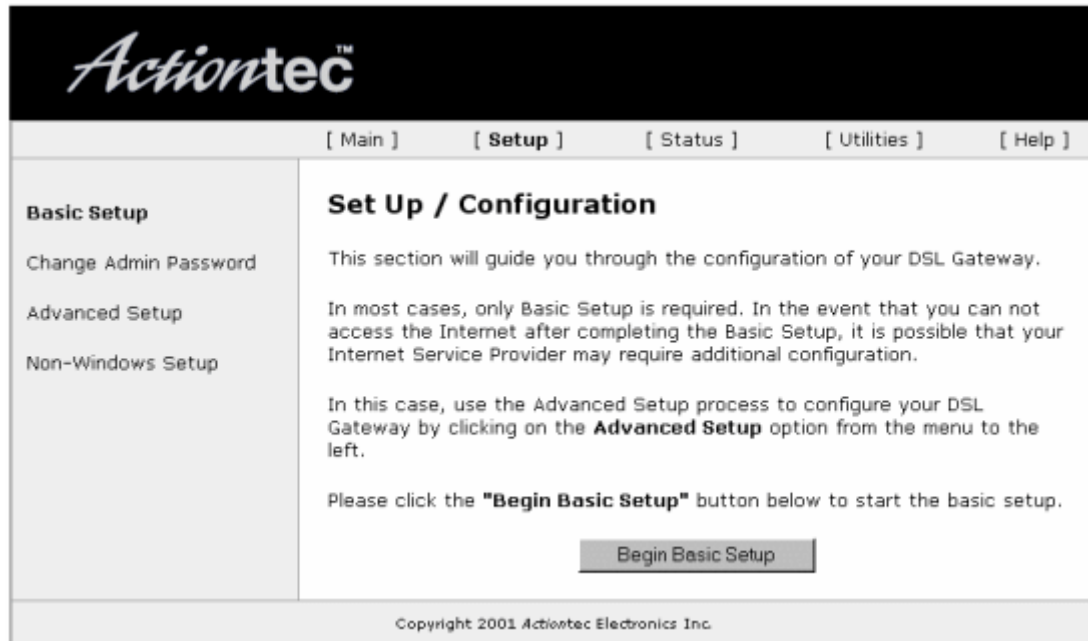
1. Open your Web browser (Microsoft® Internet Explorer or Netscape®). In the location or address bar, type **192.168.0.1**. Select **Enter**.



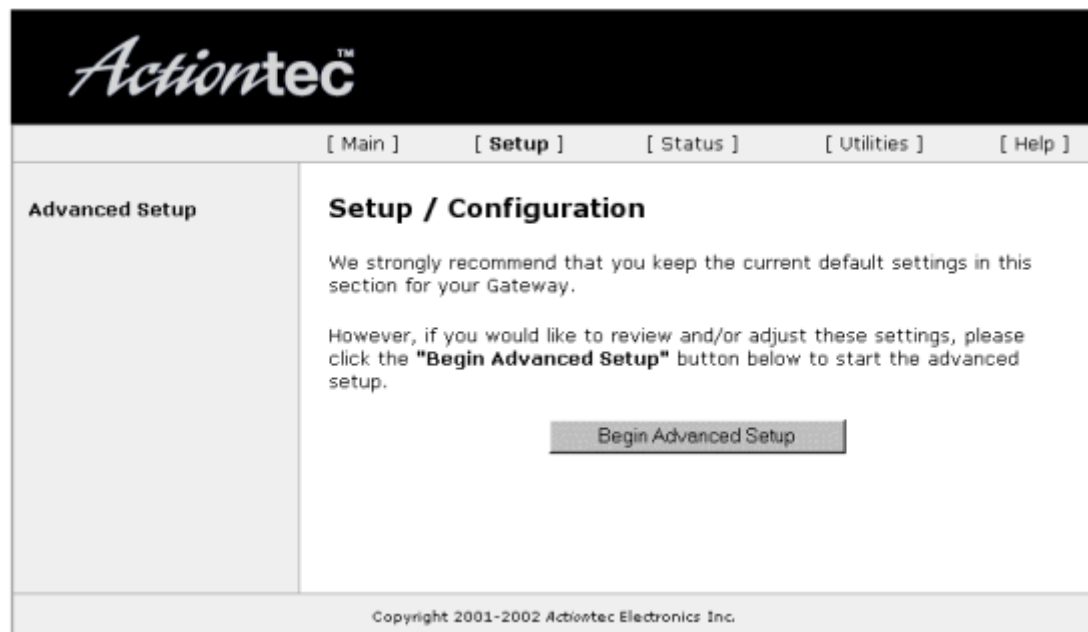
2. Select **Setup/Configuration**.



3. Select **Advanced Setup**.



4. Select the **Begin Advanced Setup** button.



5. Select **Port Forwarding** on the left.

- Type in the port and/or port ranges you want to forward.
- Select the protocol type. Then type in the IP Address of the PC that should be able to use those ports. Select **Add** and it should display in the white box.
- Select **Next**.
- Select **Save and Restart** in the bottom left.

The screenshot shows the Actiontec web interface for configuring Port Forwarding. The page has a black header with the Actiontec logo. Below the header is a navigation bar with links for [Main], [Setup], [Status], [Utilities], and [Help]. On the left side, there is a sidebar menu under 'Advanced Setup' with various options: WAN IP Address, Wireless Settings, LAN IP Address, DHCP Server, Services Blocking, Website Blocking, VPN Pass Through, Remote Management, Port Forwarding (which is highlighted), DMZ Hosting, Firewall, Dynamic Routing, NAT, Static Routing, and MAC Address Cloning. At the bottom of the sidebar is a 'Save and Restart' button. The main content area is titled 'Port Forwarding' and contains the following text: 'Please enter ports and port ranges, that some internet applications require to be forwarded, in the spaces below.' Below this text are three input fields: 'IP Port Range' (with a 'to' separator), 'Protocol' (a dropdown menu set to 'TCP'), and 'IP Address'. There are 'Add' and 'Remove' buttons below these fields. Below the input fields is a 'List of Forwarded Ports' section with a large empty white box. To the right of this box is an 'Advanced ...' button. At the bottom of the list are 'Back' and 'Next' buttons. The footer of the page contains the text 'Copyright 2001-2002 Actiontec Electronics Inc.'

- Then select the **Save and Restart** button. This will reboot the router with the new settings.



- When the power LED light stops flashing, the configuration is complete.

