

**Qwest® Premium Networking Modem:
Motorola® 3347**

How to Modify the Wireless Security WEP Key



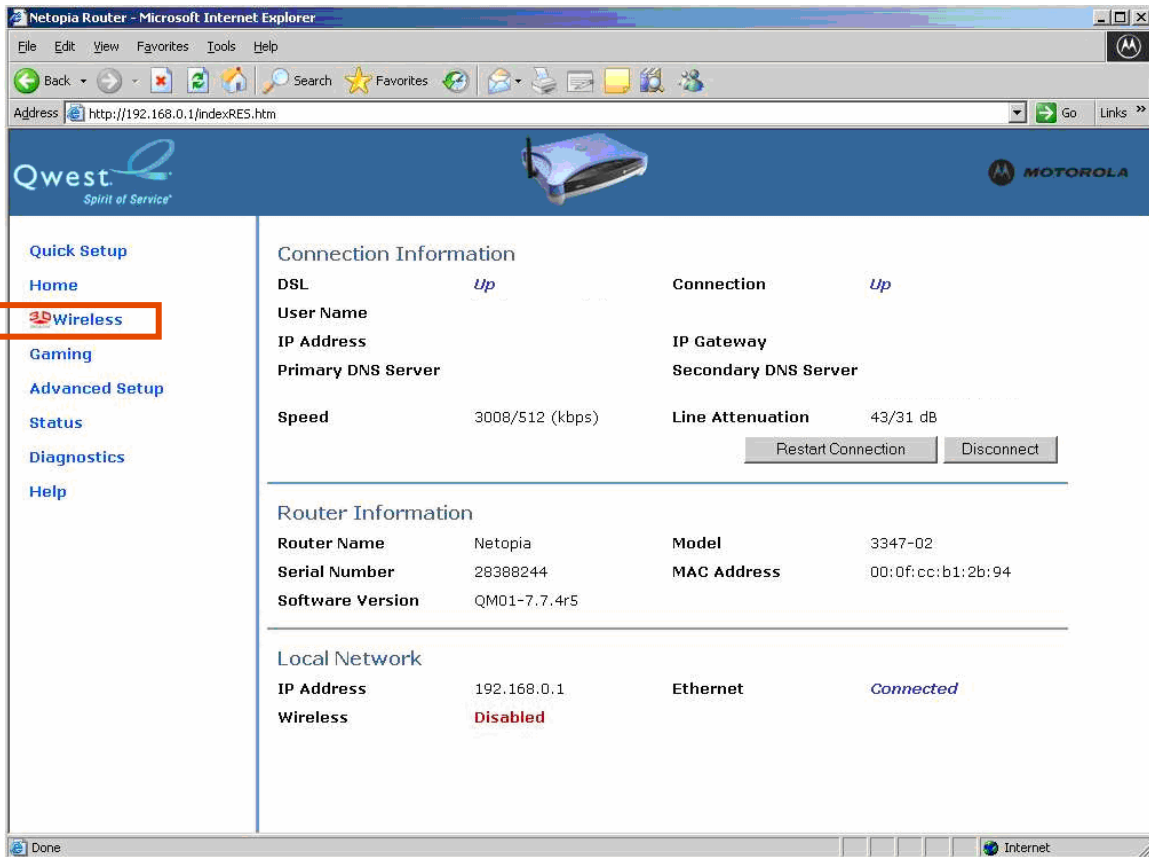
Use this documents if:

- You want to modify your modem wireless security WEP (Wired Equivalent Privacy) key, providing a medium level of wireless security.

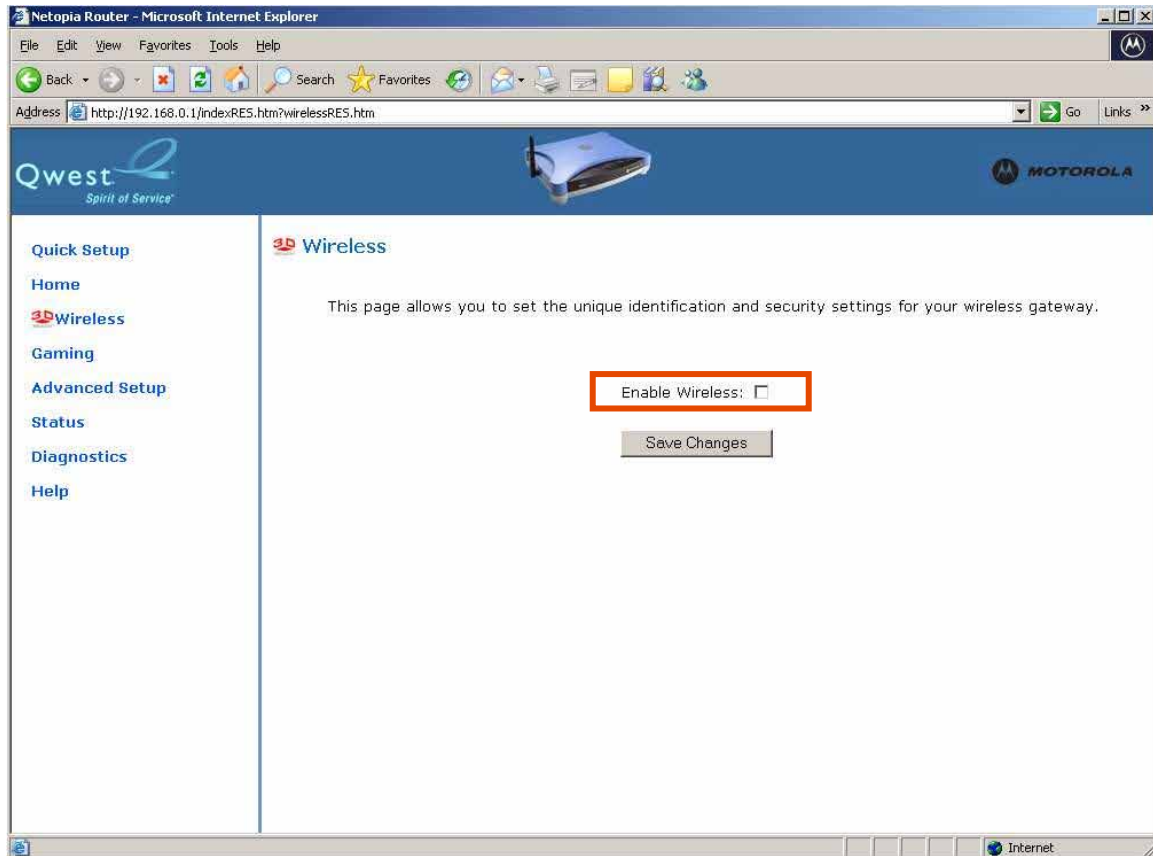
This document assumes:

- You use the Qwest Premium Networking Modem: Motorola 3347.
- Your modem is connected directly to your computer.
- You have installed and configured an appropriate wireless card and driver to support WEP, on the computer you will be using for a wireless connection with your modem.
- You will ensure the keys you select match on your computer(s) and modem. You can select between 64, 128, or 256 bit keys, either using the default keys (based on the routers serial number) or creating your own.

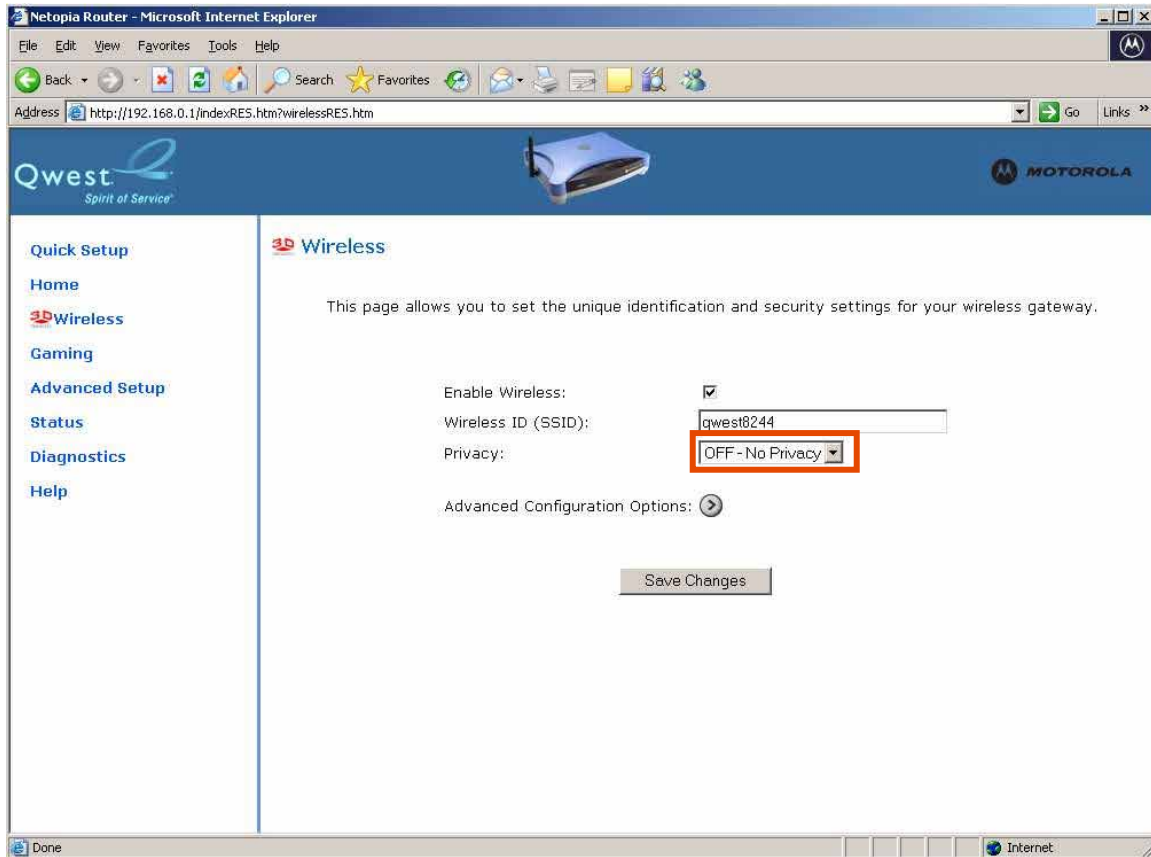
1. Enter "192.168.0.1" in the Address bar of your Internet browser.
2. On the modem home page, select **Wireless** from the options on the left.



3. Select the **Enable Wireless** check box to enable wireless and view available options.



4. Select **WEP-Manual** from the **Privacy** drop-down list. This is a pre-shared key that will work between your modem and computer.



5. By default, 128-bit WEP is selected and a unique 128-bit WEP key is generated automatically based on the routers serial number.
 - We recommended you use this for wireless access.
 - If you use these default values, simply select the **Save Changes** button.

To add an alternative wireless key, enter it in the **Encryption Key #1** field. Then, select the **Save Changes** button.

