

Qwest® Standard Modem: Actiontec® M1000
How to Change Your Modem LAN IP Address



Use this document if:

- You want to modify the Local Area Network (LAN) IP address.

Note: The modem default LAN IP address of 192.168.0.1. You may use these instructions to change the address as needed, based on your networking environment.

This document assumes:

- You are using the Qwest® Standard Modem: Actiontec® M1000
- Your modem is using a QA02 firmware version. If you are unsure which firmware version you have, see the “Which Firmware Version Do I Have?” section later in this document.
- Your modem is connected directly to your computer.

Which Firmware Version Do I Have?

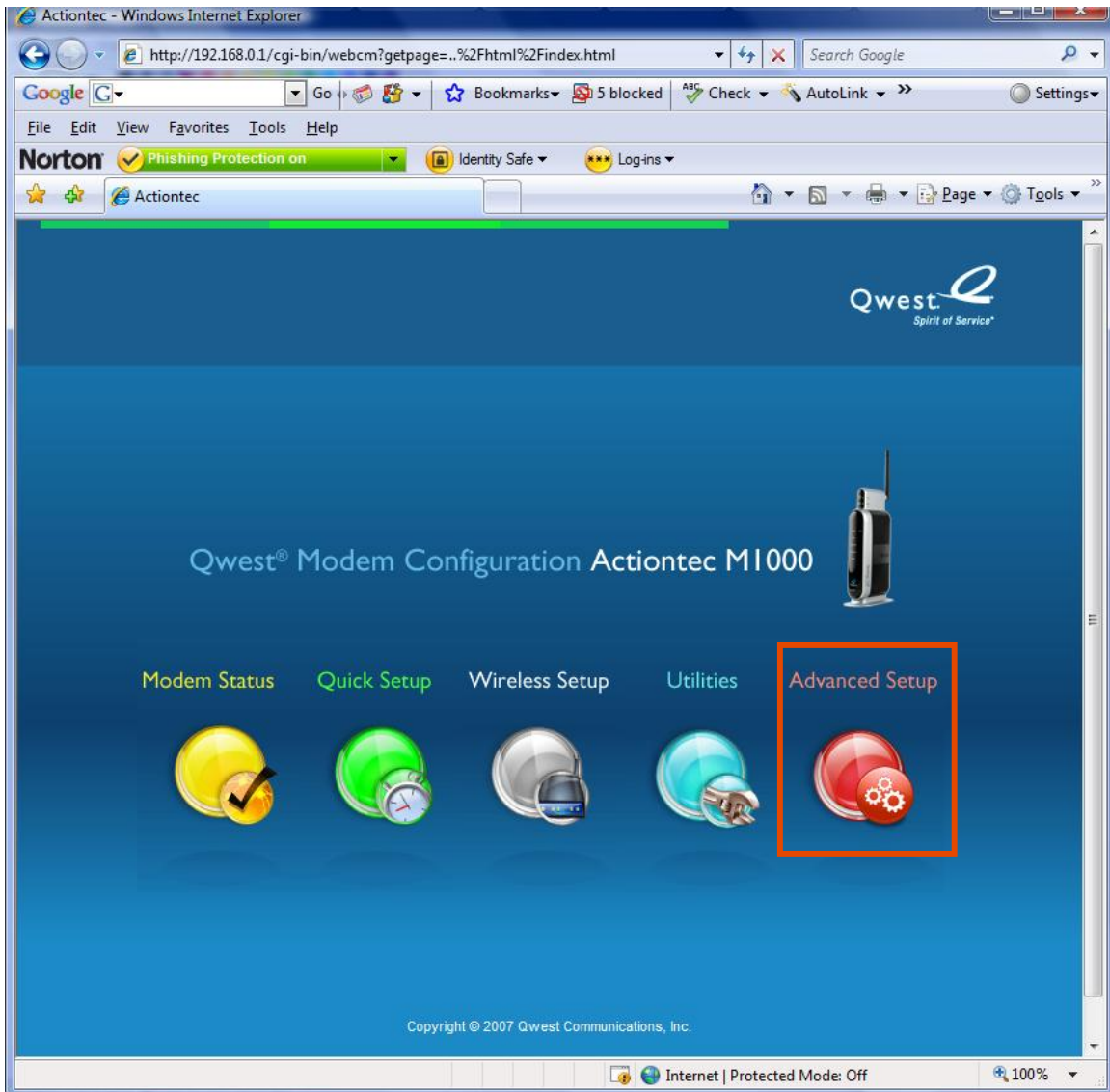
1. To determine which modem firmware your modem is using, enter 192.168.0.1 in your web browser and press **Enter**.
2. When the Qwest Modem Configuration Actiontec M1000 page appears, click on **Modem Status**. The following page will appear. Look for the "Firmware Version" toward the middle of the screen.



Changing the LAN IP Address

The Actiontec M1000 provides the flexibility to change the LAN IP address and the subnet mask of the device on the LAN. When changing the LAN IP address of the modem, ensure the DHCP server allocated addresses are updated when required with the LAN IP change. The address to access the GUI will change to the new LAN IP.

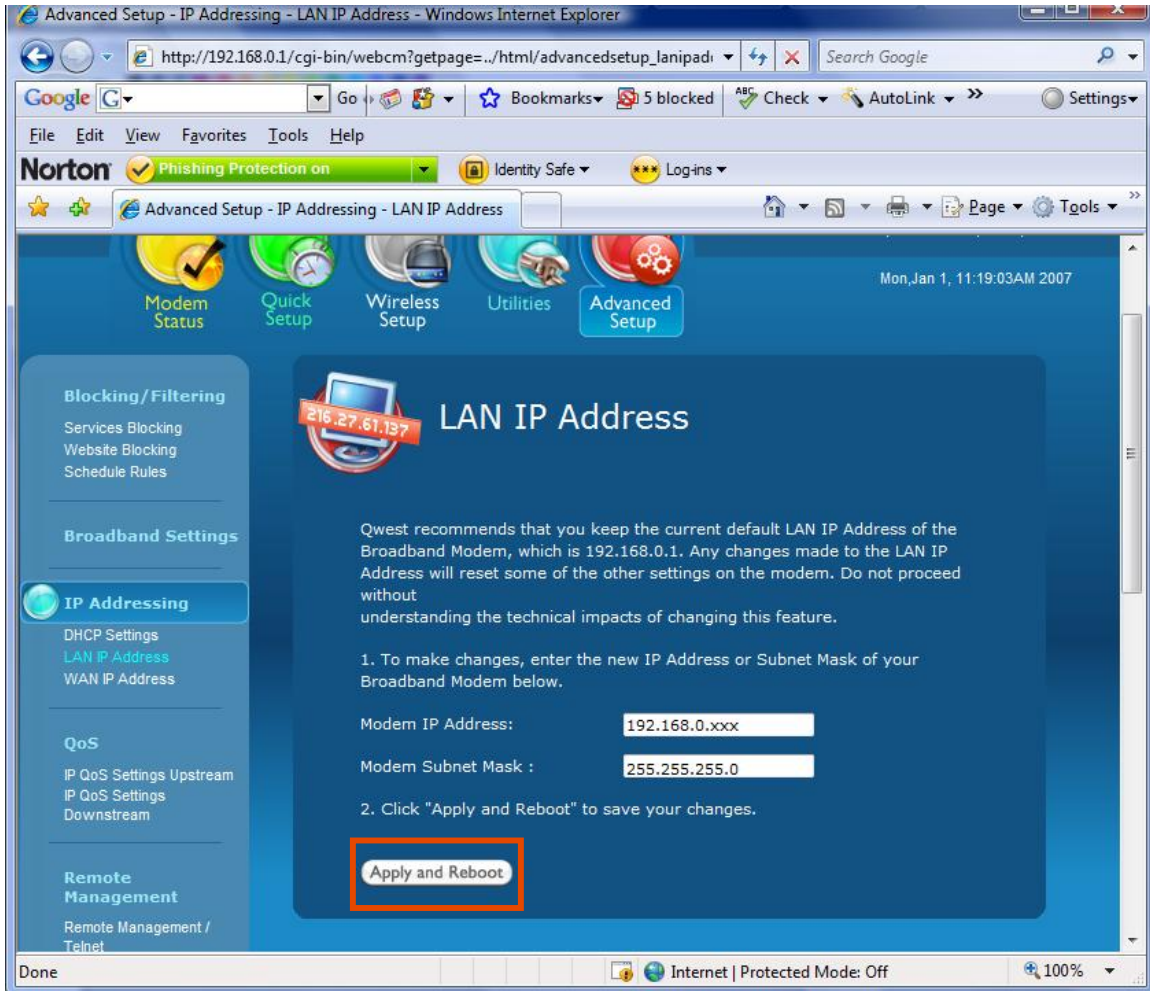
1. Enter 192.168.0.1 in your web browser. The following page will appear. Select **Advanced Setup**.



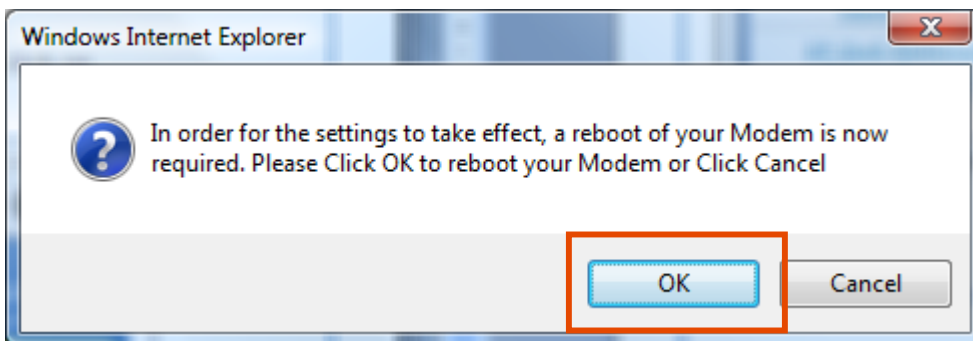
2. Select **LAN IP Address** in the left-hand column.



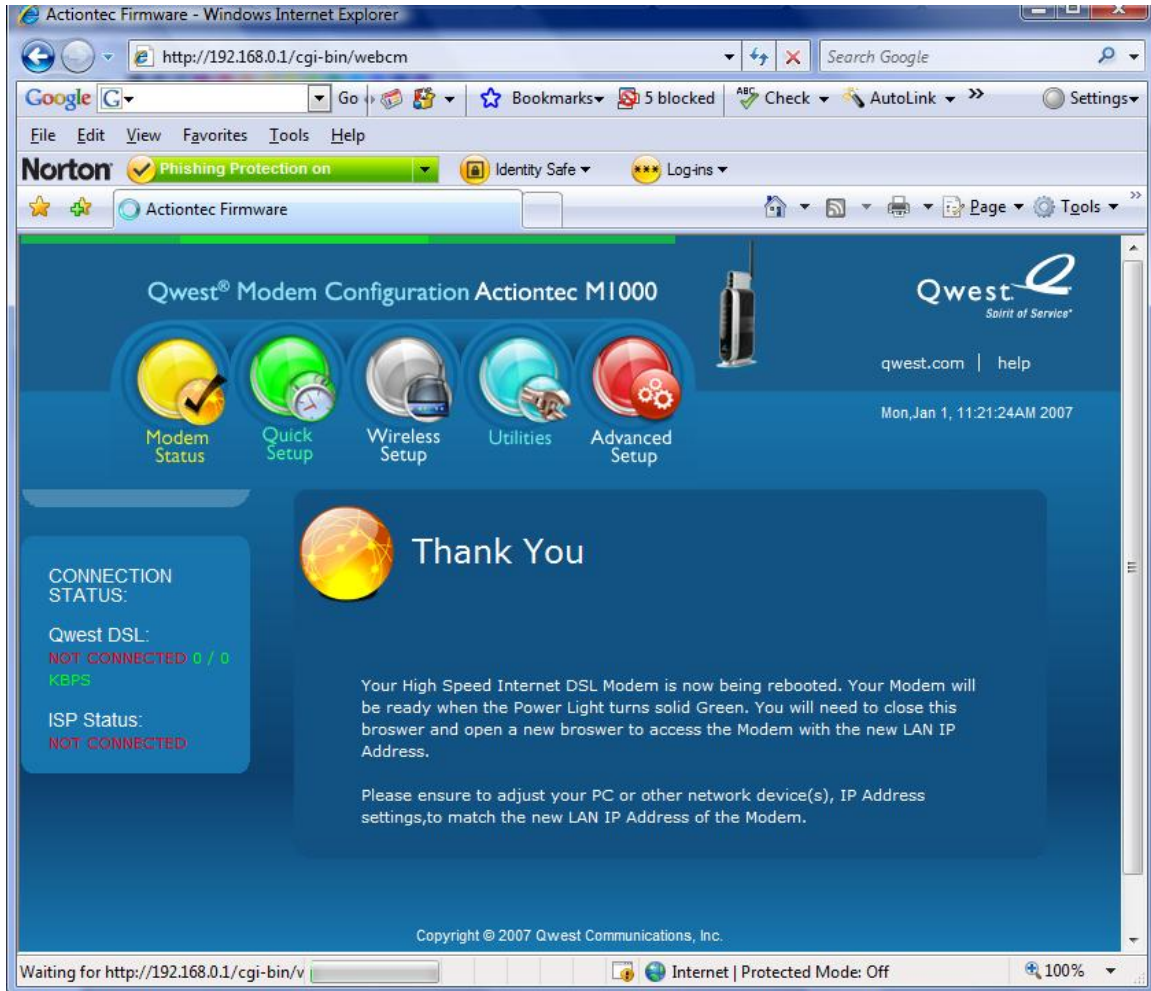
3. Change the modem IP address to the desired IP. You can also change the modem subnet mask if required. Select **Apply and Reboot**.



4. Select **OK** to reboot your modem.



5. The following page will appear. When the configuration is complete you will be directed back to the WAN Setup page.



The LAN IP address of your Actiontec M1000 has been changed. Be sure to write down the new LAN IP for future use.