



**Qwest® Standard Modem: Actiontec® M1000**

**How to Configure Your Modem for Dynamic IP Addressing  
Using PPPoA**

**Internet Service Provider (ISP):  
MSN® Premium or Windows Live™**

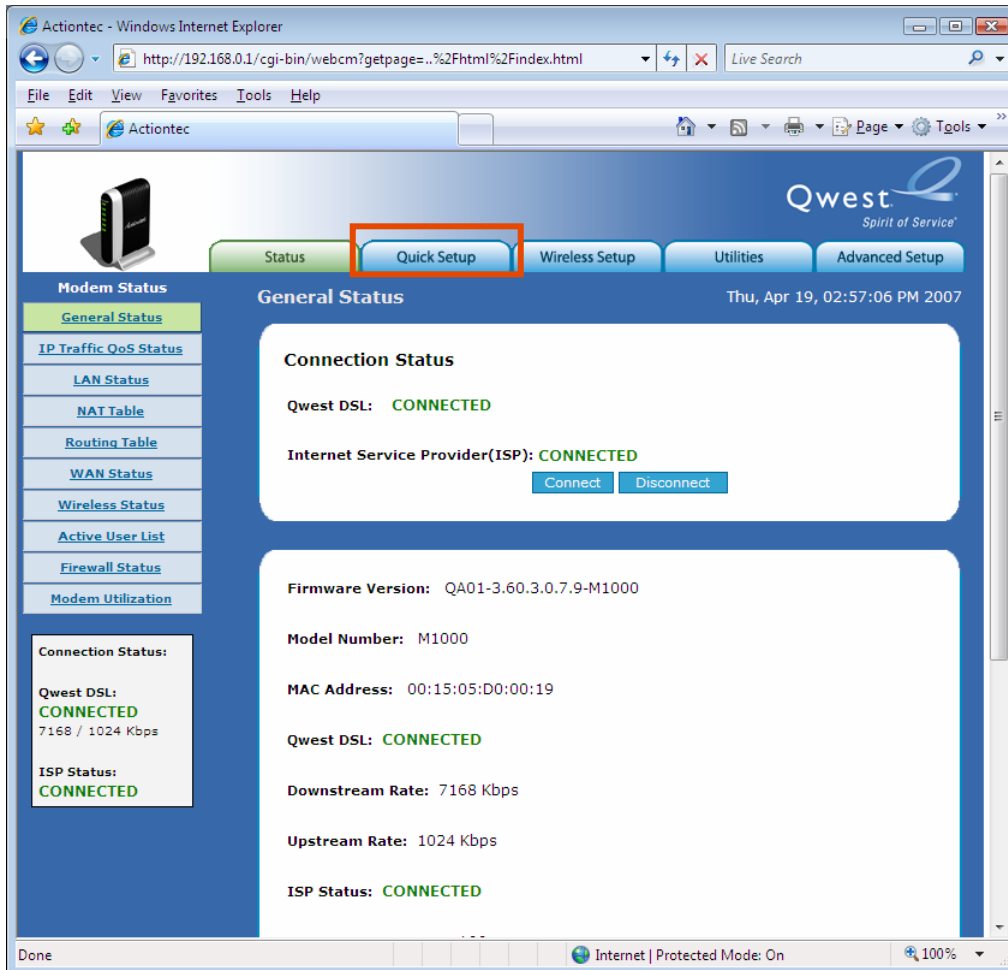
**Use this document if:**

- You need to configure your modem for dynamic IP addressing using PPPoA.

**This document assumes:**

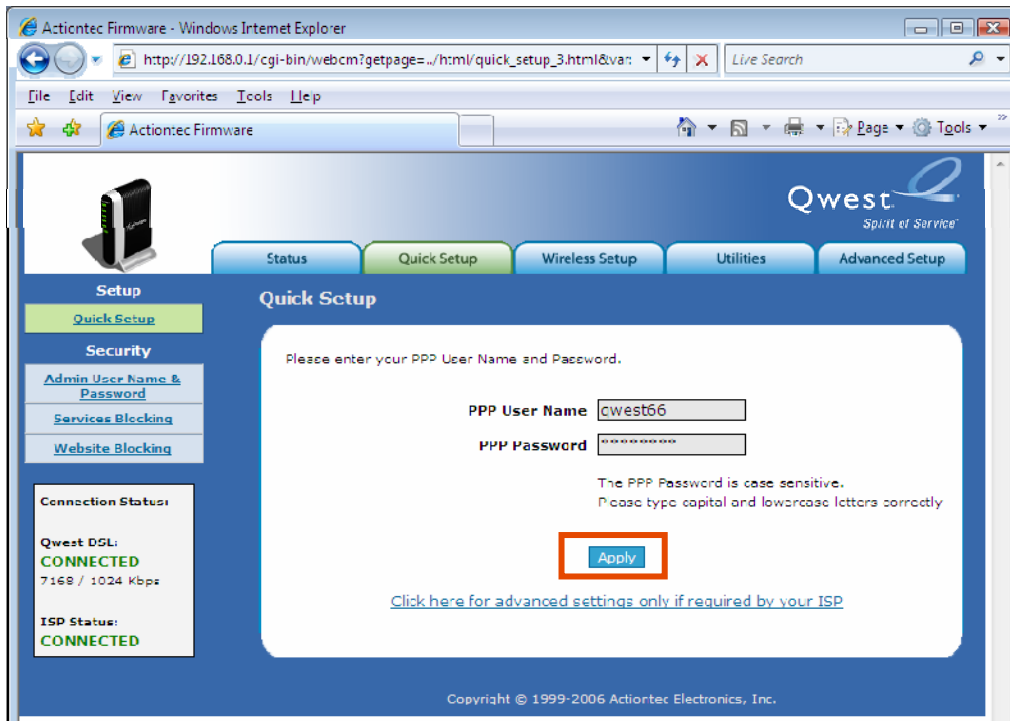
- You are using the Qwest® Standard Modem: Actiontec® M1000.
- You have your PPP credentials provided by your Internet Service Provider (ISP).
- Your ISP is MSN® Premium or Windows Live™.

1. Enter "192.168.0.1" in the address bar of your Internet browser. Then, select the **Quick Setup** tab.

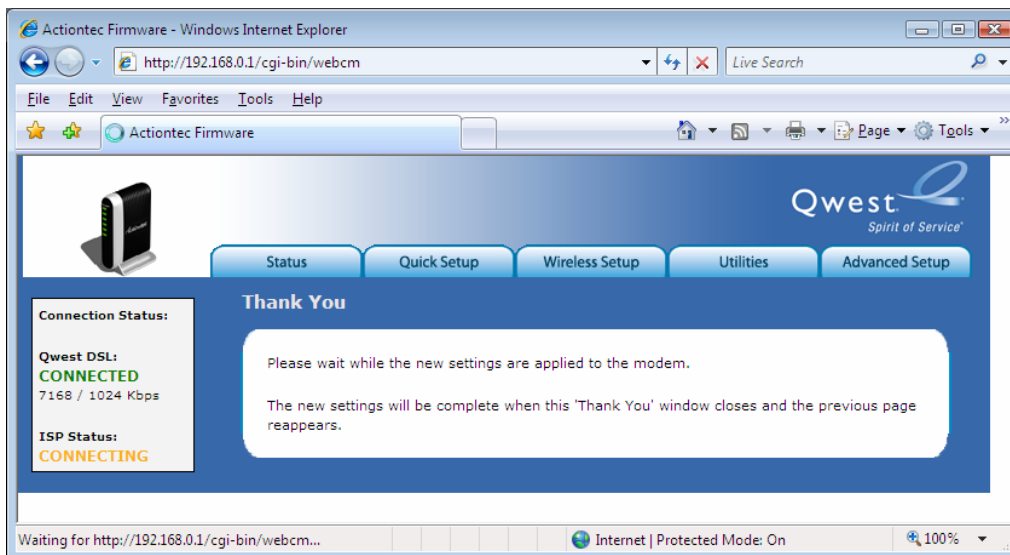


2. Insert the **PPP user name** and **PPP password** provided by your ISP. Then, select **Apply**.

Note: If you are a Qwest.net or MSN customer, you must add “@qwest.net” to the end of your PPP user name (e.g., if your user name is “qwest123,” you should enter “qwest123@qwest.net” in the PPP User Name field).



3. A “Thank You” page will appear briefly.



4. After configuration is complete, you will be redirected automatically back to the “Quick Setup” page.

When the Qwest DSL and ISP status show connected, your modem is ready to use with dynamic IP addressing using PPPoA.

