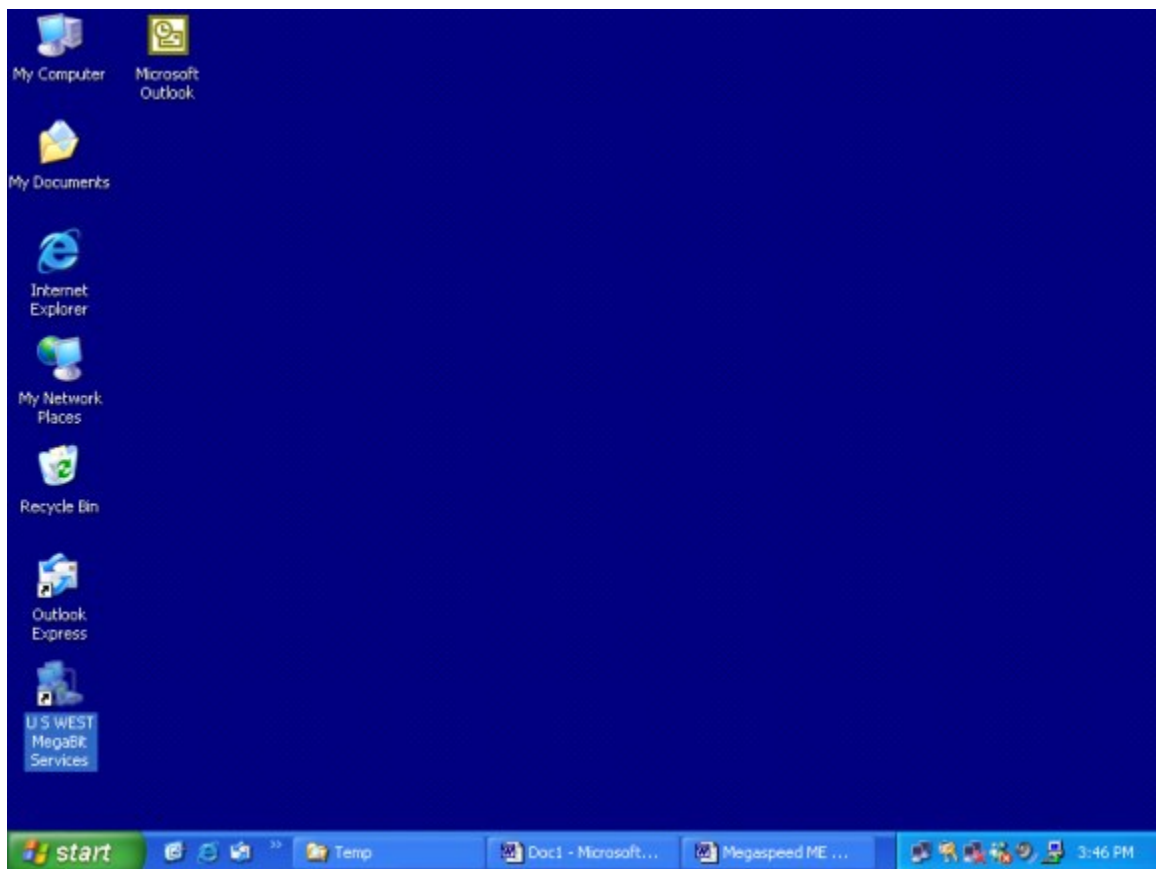


Intel® PRO/DSL 3200 Modem

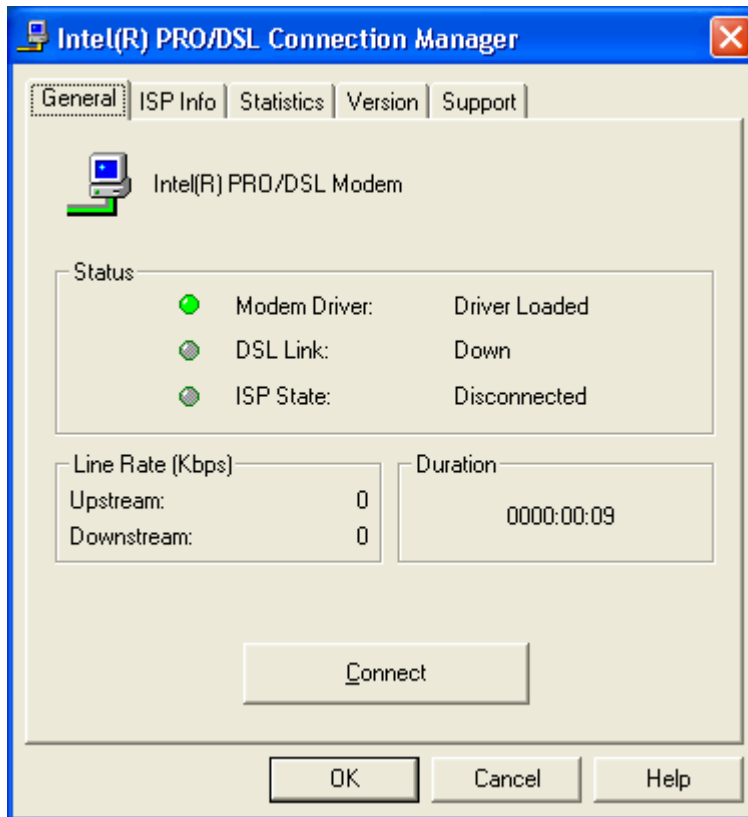
How to Connect to the Internet – New Installation RFC 1483 Bridged Configuration

Windows® XP

1. Double-click on the **Intel modem** icon.



2. Select the **Connect** button. If the button says Disconnect, you're connected to the Internet.



3. If the connection icon in the bottom right corner is green, you're connected to the Internet.



If the icon is green
you are connected to
the Internet.