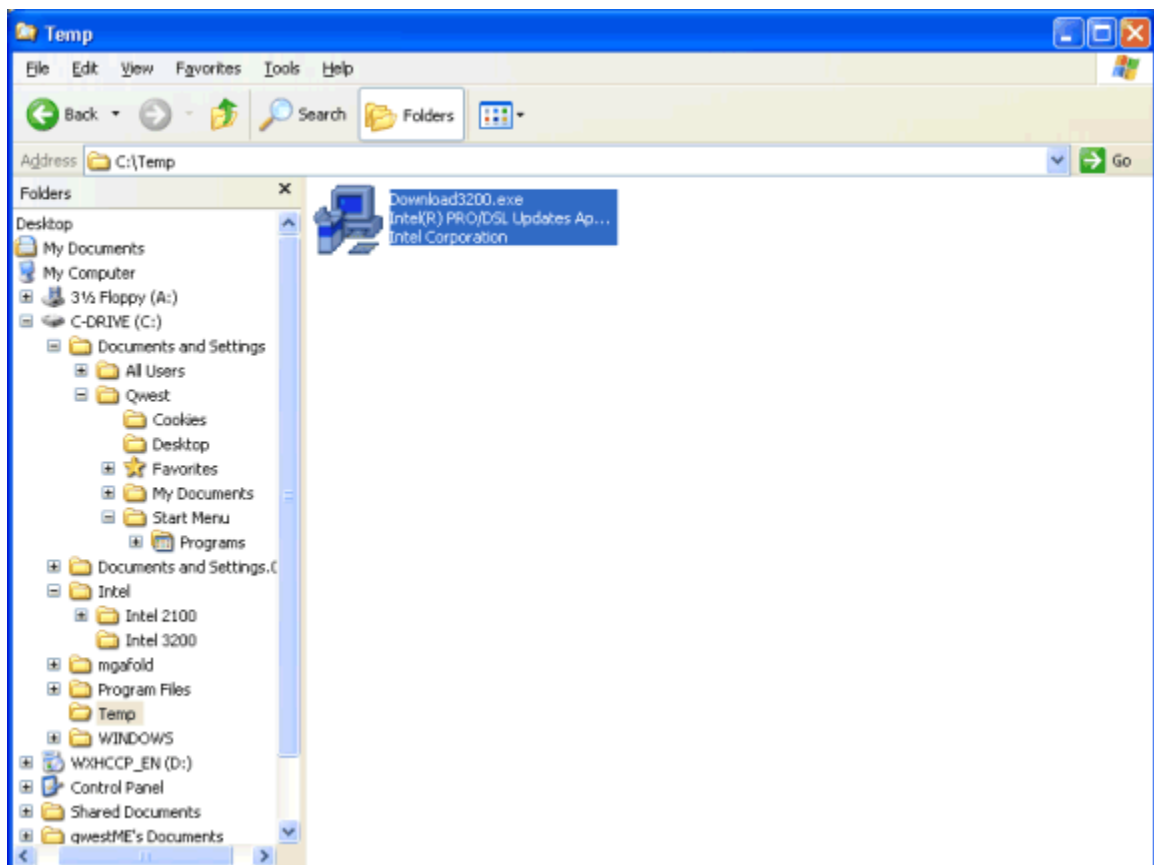


## Intel® PRO/DSL 3200 Modem

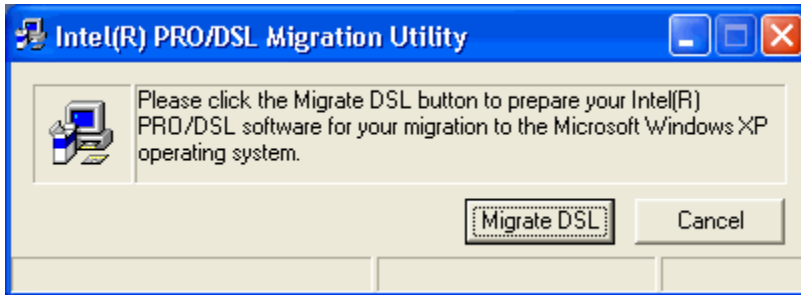
### How to Install the Modem Software – Update (Migration) PPP Configuration

#### Windows® XP

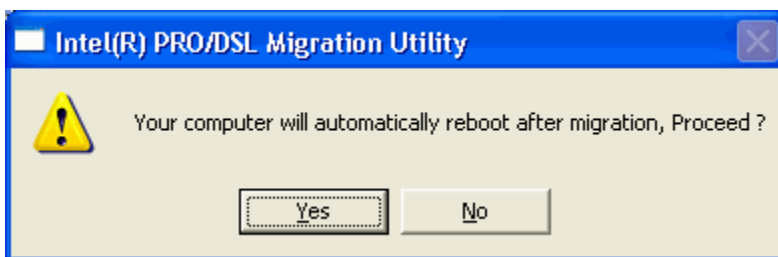
1. Open **download3200.exe** on your hard drive.



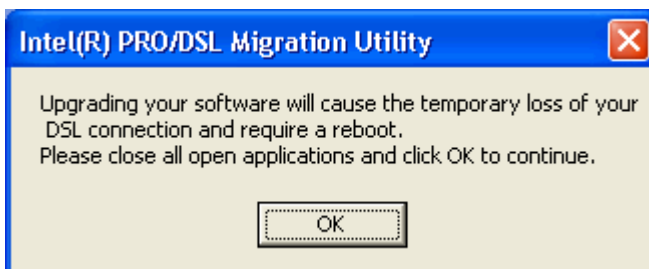
2. Select **Migrate DSL**.



3. Select **Yes**.



4. Select **OK**.



**Note:** The software will search your computer for modem configuration information. This process may take several minutes. Don't continue until you're prompted to do so.

5. Select **Continue Anyway**. Your computer will reboot.



Your modem is ready to use with Windows® XP.