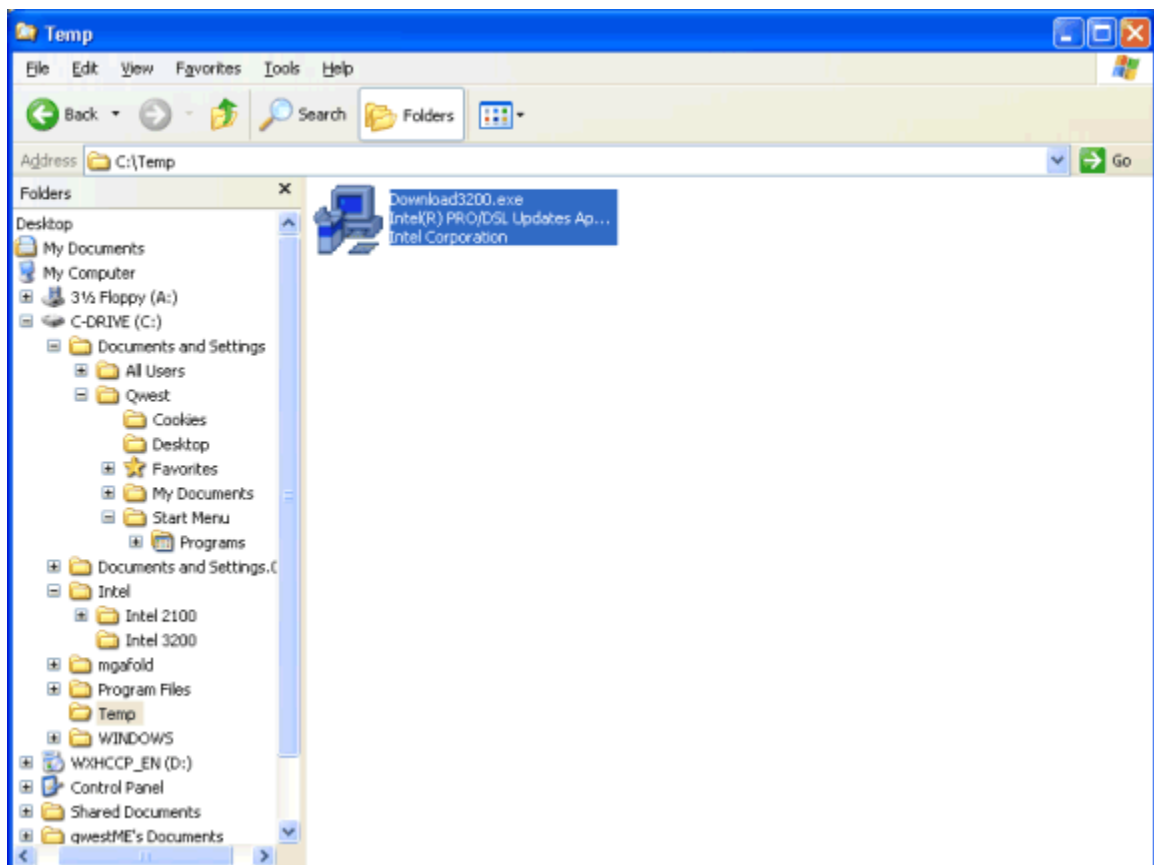


Intel® PRO/DSL 3200 Modem

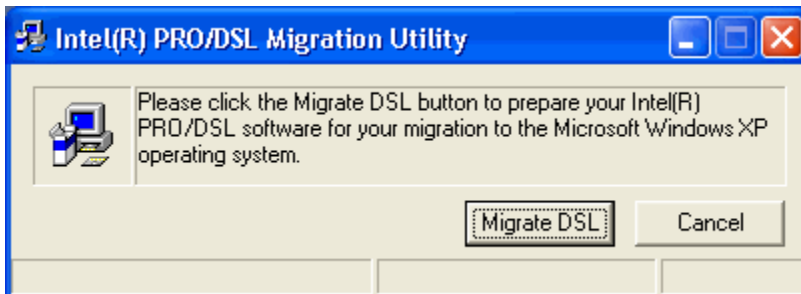
How to Install the Modem Software – Update (Migration) RFC 1483 Bridged Configuration

Windows® XP

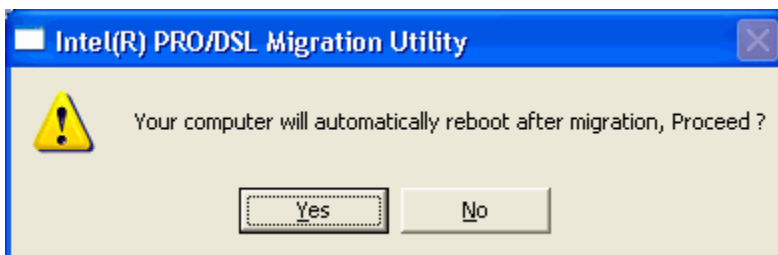
1. Open the **download3200.exe** file saved to your hard drive.



2. Select **Migrate DSL**.



3. Select **Yes**.



4. Select **Continue Anyway**.



Your modem is ready to use with Windows® XP.