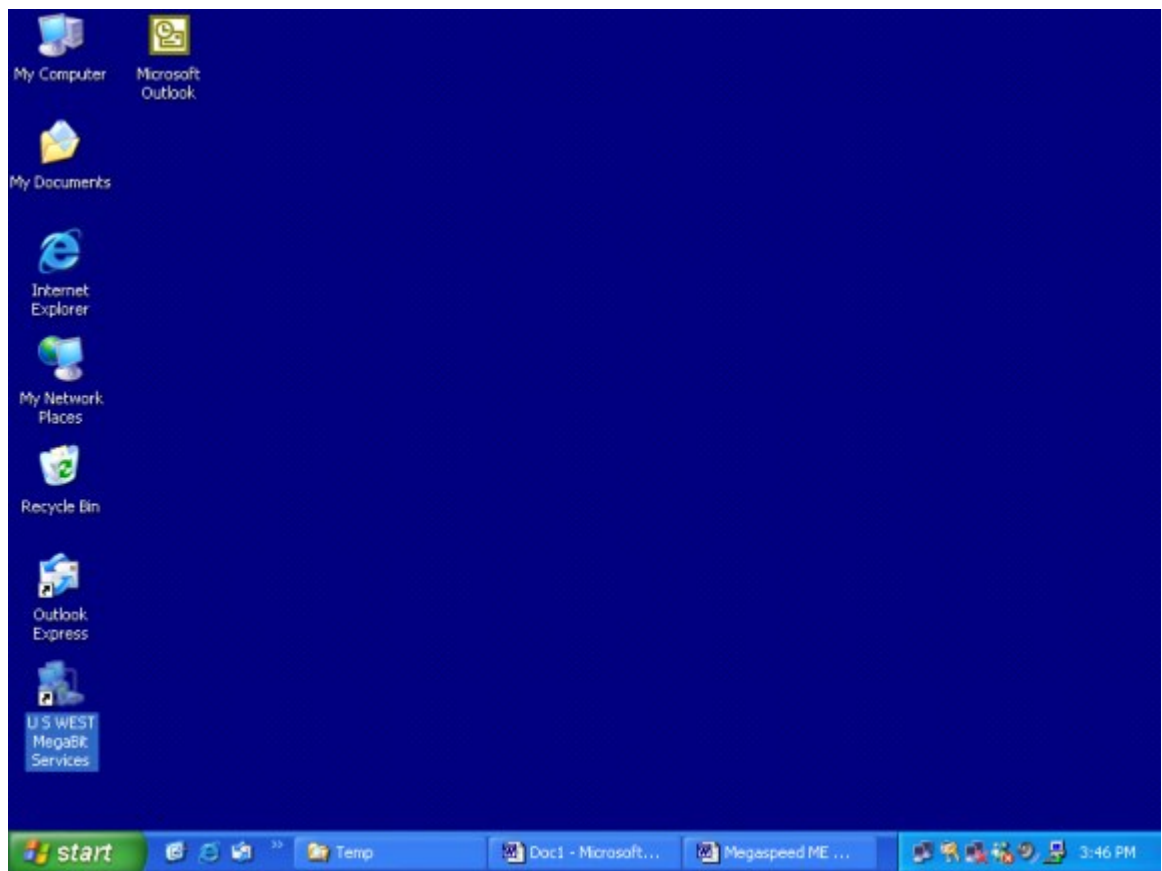


Intel® PRO/DSL 3200 Modem

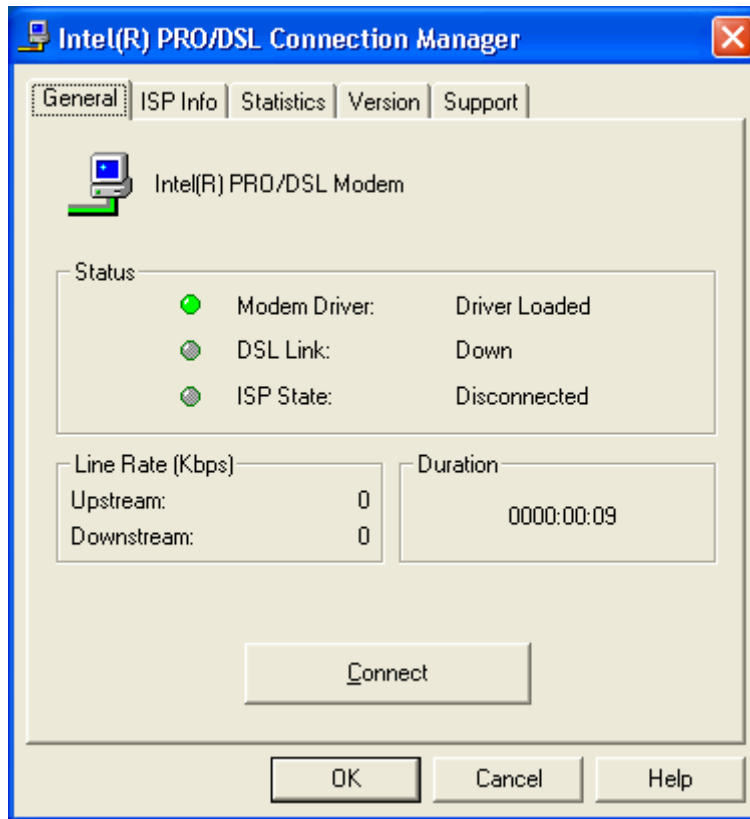
How to Connect to the Internet – Update (Migration)
RFC 1483 Bridged Configuration

Windows® XP

1. Double-click on the **Intel DSL modem** icon.



2. Select the **Connect** button. If the button says Disconnect, you're already connected to the Internet.



Note: Your ISP user ID and password are on the ISP worksheet. If you've lost the worksheet, call your ISP's technical support.

3. If the connection icon in the bottom right corner is green, you're connected to the Internet.



If the icon is green
you are connected to
the Internet.