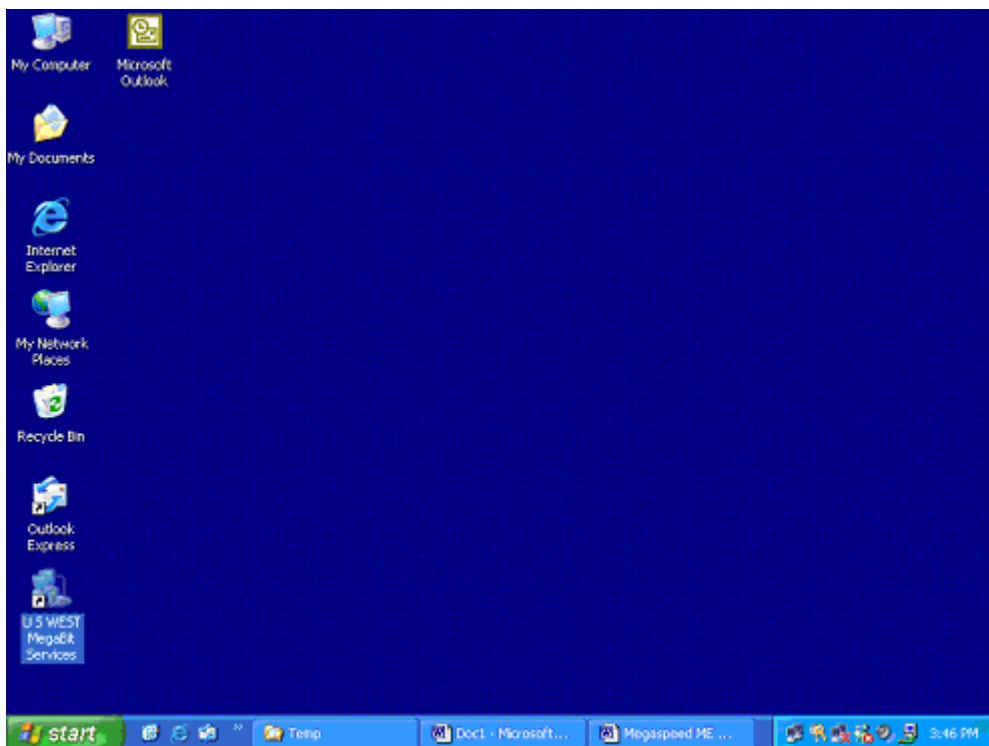


## Intel® PRO/DSL 2200 Modem

### How to Connect to the Internet – Update (Migration) PPP Configuration

#### Windows® XP

1. Double-click on the **Intel DSL modem** icon.



2. Type your ISP provided User ID and Password. Select "Save this user name and password for the following users." Select **Dial**.

**Note:** Find your User ID and Password on your ISP worksheet. If you've lost your worksheet, call your ISP's technical support.



3. Double-click the Connection Manager icon in the system tray on the bottom right corner of the screen.



Connection  
Manager icon

4. If the three indicators under the "Status" section are green, you're connected to the Internet.

