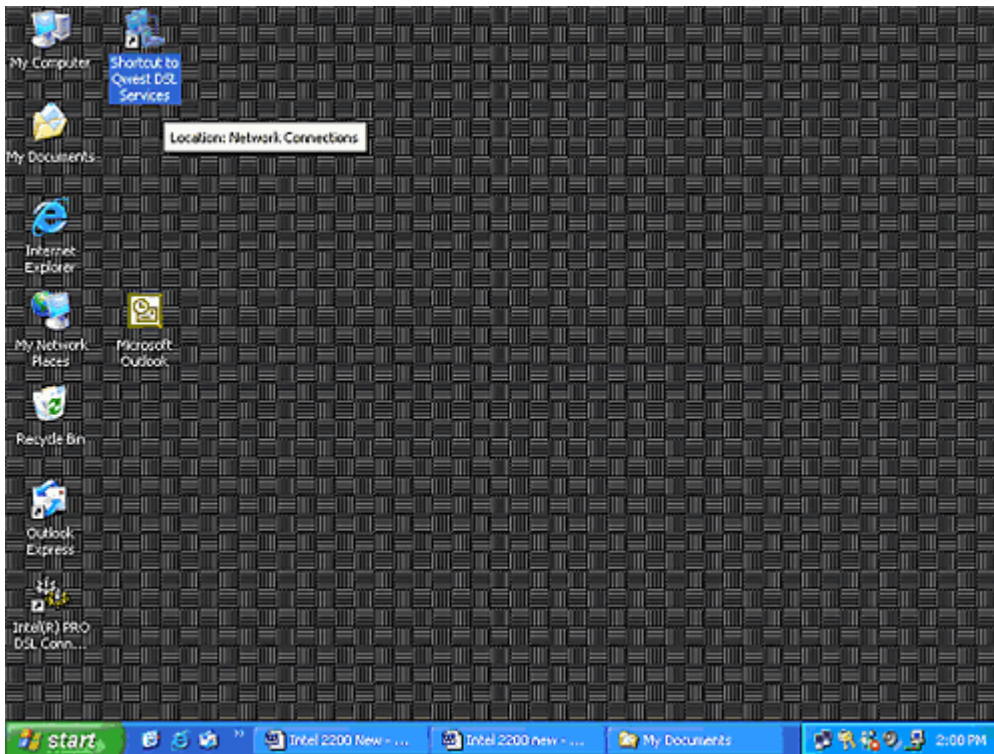


## Intel® PRO/DSL 2200 Modem

### How to Connect to the Internet – New Installation PPP Configuration

#### Windows® XP

1. Double-click on the **Intel modem** icon.



2. Type your ISP provided User ID and Password. Select "Save this user name and password for the following users." Select **Dial**.

**Note:** The User ID and Password are on your ISP worksheet. If you've lost your worksheet, call your ISP's technical support.



3. Double-click the **Connection Manager** icon at the bottom right corner of the screen.



Connection  
Manager icon

4. If the three indicators under the "Status" section are green, you're connected to the Internet.

