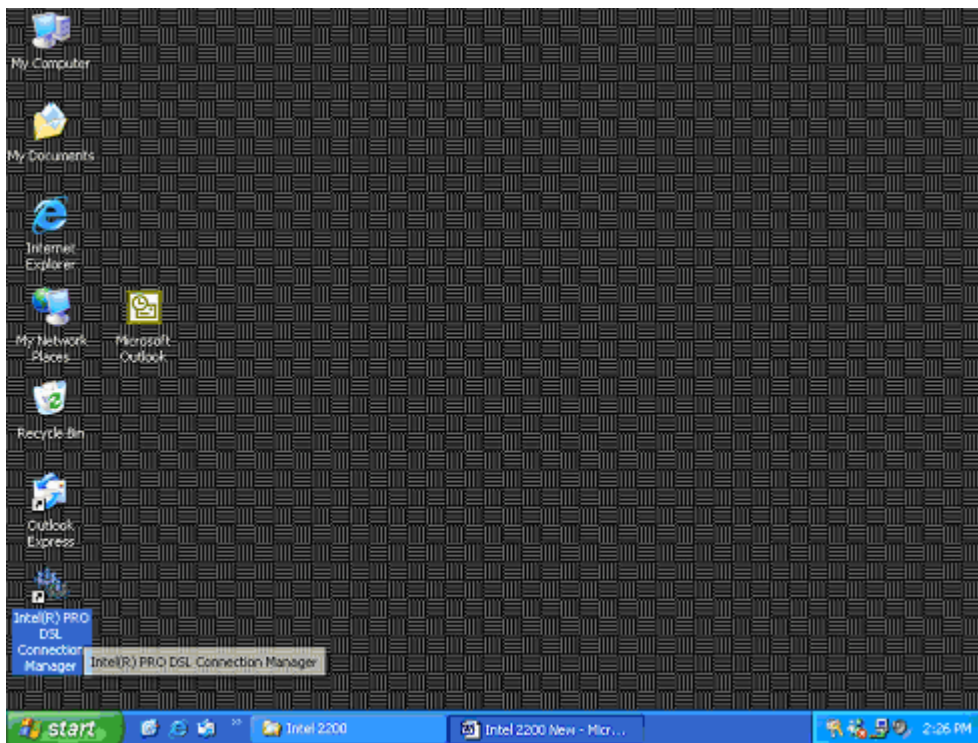


Intel® PRO/DSL 2200 Modem

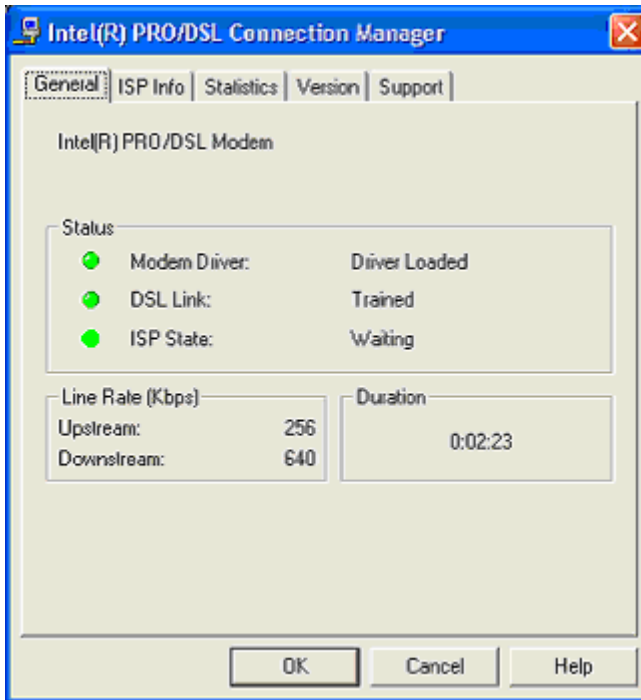
How to Connect to the Internet – New Installation RFC 1483 Bridged Configuration

Windows® XP

1. Double-click on the **Intel modem** icon.



2. Your modem will automatically connect to the Internet. If the three status lights are green, you're connected.



3. A green connection icon in the bottom right corner of the screen is another indication you have Internet access.



If the icon is green you are connected to the Internet