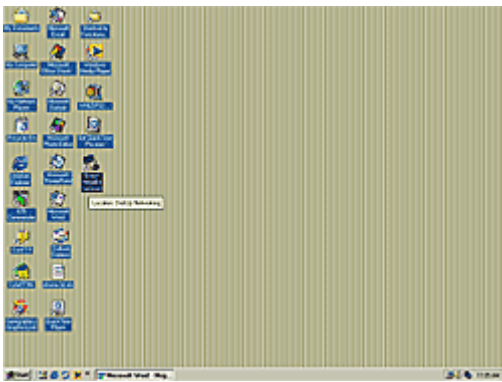


## Intel® PRO/DSL 2100 Modem

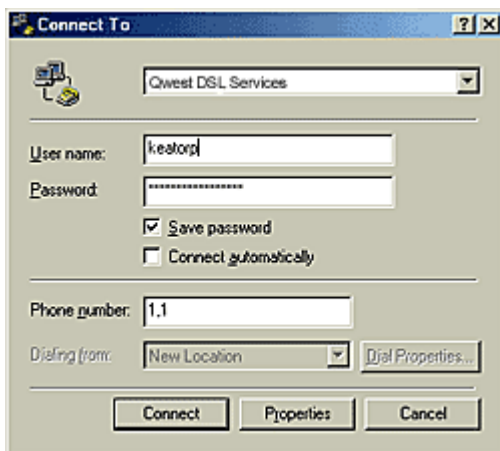
### How to Connect to the Internet PPP Configuration

#### Windows® ME

1. Double-click on the **Qwest®** high-speed Internet icon.



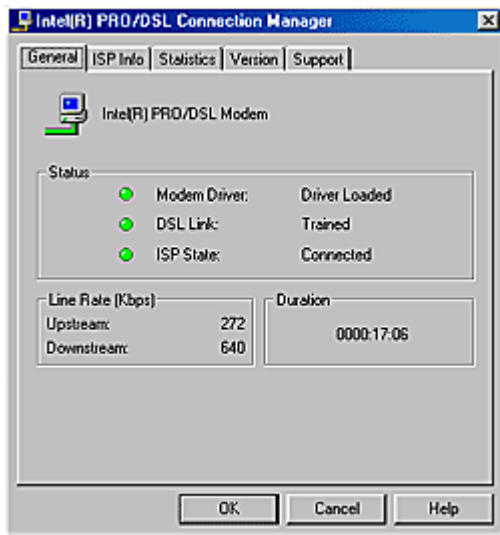
2. Type in your ISP-provided **User name** and **Password**. Then, select **Dial**.



3. Double-click on the **Connection Manager** icon in the bottom right corner of your screen to launch the Connection Manager (which connects and disconnects your high-speed Internet service).



5. Your Connection Manager screen should resemble the picture below when you're connected to the Internet.



6. Select **OK**. The installation is complete. You're ready to browse the Internet.