

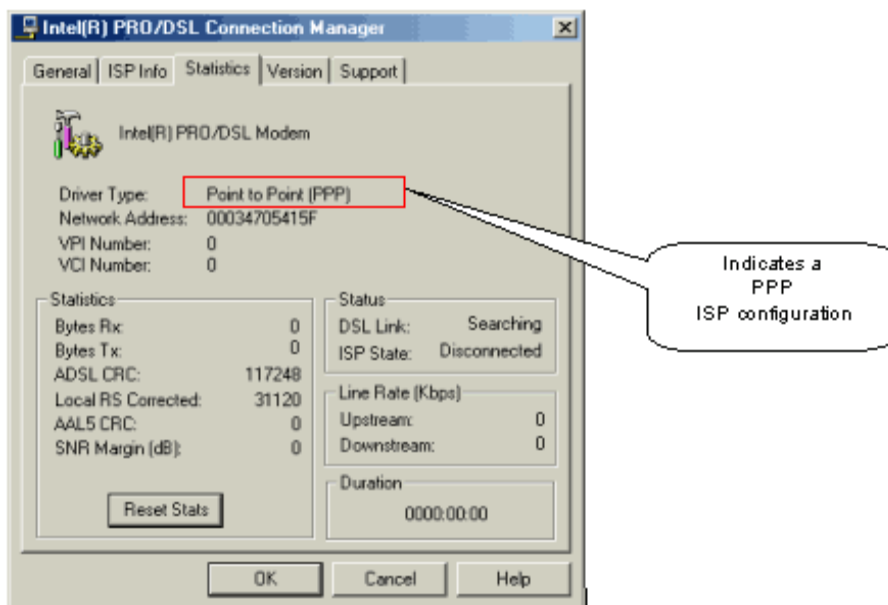
Intel® PRO/DSL 2100 Modem

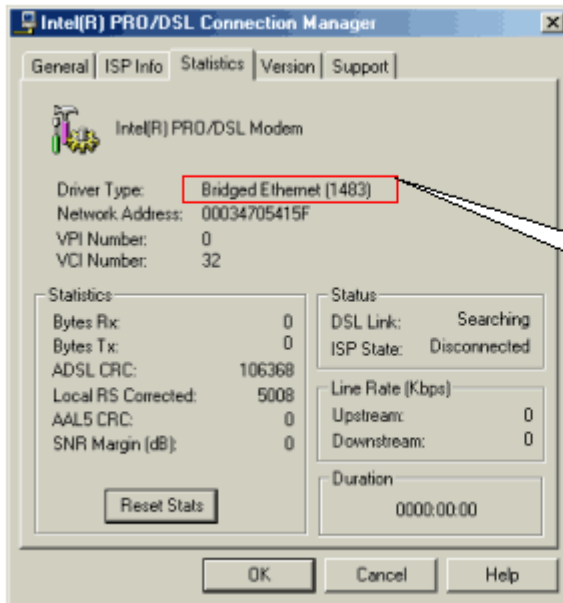
How to Tell If You're Using PPP or RFC 1483 Bridged Configuration

1. Double-click on the **Connection Manager** icon in the bottom right corner.



2. Select the **Statistics** tab. The "Driver Type" field will show whether you're using a PPP or a RFC 1483 Bridged configuration.





Indicates a
RFC 1483 Bridged
ISP configuration