

Qwest® Standard Modem: Actiontec® GT701

How to Configure Dynamic IP Addressing Using PPPoA

**Internet Service Provider (ISP):
All Except MSN® Premium**

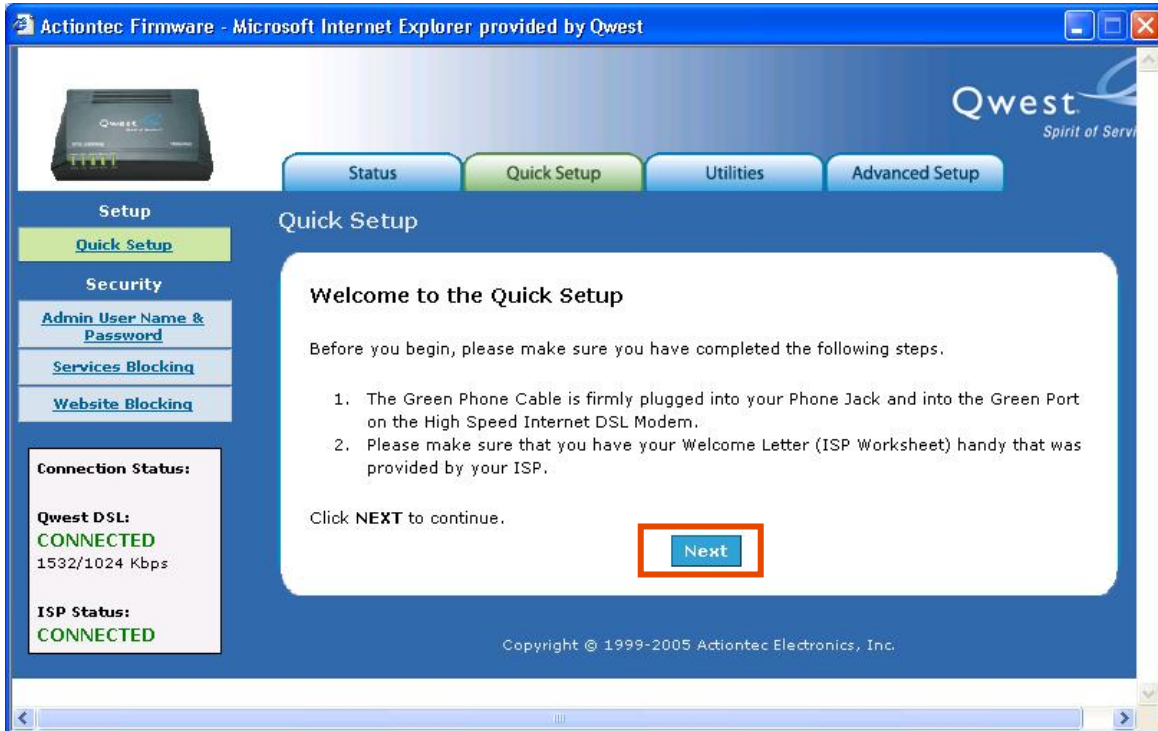
Use these instructions if your Internet Service Provider (ISP) is a provider other than MSN® Premium.

1. Enter "192.168.0.1" in the Address bar of your Internet browser, which automatically opens the "General Status" page. Select the **Quick Setup** tab.

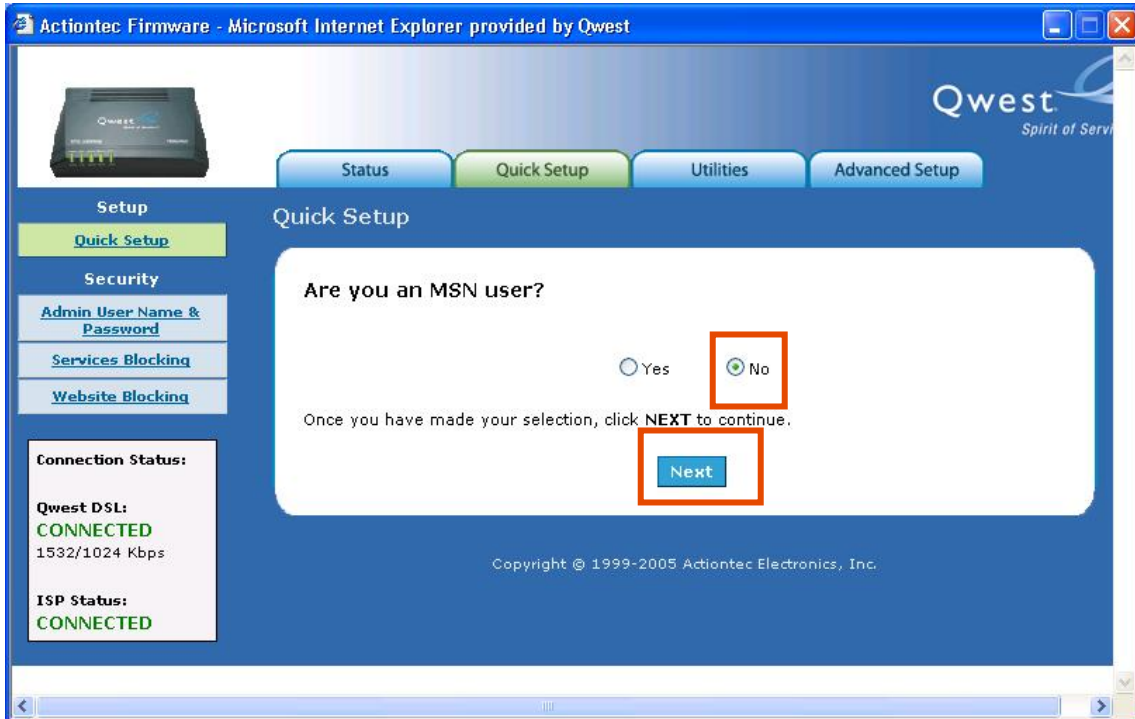


The screenshot shows the Actiontec GT701 modem's web interface. The browser window title is "Actiontec Firmware - Microsoft Internet Explorer provided by Qwest". The page features a navigation bar with tabs for "Status", "Quick Setup", "Utilities", and "Advanced Setup". The "Quick Setup" tab is highlighted with a red box. Below the navigation bar, the "General Status" page is displayed. It includes a "Modem Status" sidebar with links to "General Status", "IP Traffic QoS Status", "LAN Status", "NAT Table", "Routing Table", "WAN Status", and "Active User List". The main content area shows the "Connection Status" section, which indicates "Qwest DSL: CONNECTED" and "Internet Service Provider(ISP): CONNECTED". There are "Connect" and "Disconnect" buttons. Below this, the "Firmware Version" is listed as "QW05-3.60.1.1.0.5-GT701", the "MAC Address" is "00:0E:B3:32:45:76", and the "Qwest DSL" status is "CONNECTED". The "Downstream Rate" is "1536 Kbps", the "Upstream Rate" is "1024 Kbps", and the "ISP Status" is "CONNECTED". At the bottom, the "PPP User Name" is "test@qwest.net".

2. Select the **Next** button.



3. Select the **No** radio button. Then, select **Next**.



4. Select the **PPPoA** radio button. Then, type your **PPP User Name** and **PPP Password**.

If you don't know your **PPP User Name** and **PPP Password**, contact your Internet Service Provider (ISP).

Actiontec Firmware - Microsoft Internet Explorer provided by Qwest

Qwest Spirit of Service

Quick Setup Utilities Advanced Setup

Setup
Quick Setup
Security
Admin User Name & Password
Services Blocking
Website Blocking

Connection Status:
Qwest DSL:
CONNECTED
1532/1024 Kbps
ISP Status:
CONNECTED

Quick Setup

Please follow the steps below.

1. Select the item below that is utilized by your ISP.
 - PPPoA**
 - PPPoE
 - RFC 1483 Transparent Bridging
 - RFC 1483 via DHCP
 - RFC 1483 via Static IP

Encapsulation RFC 1483 Bridged RFC 1483 Routed

2. Enter your PPP User Name and Password. (PPPoA and PPPoE ONLY)
 - PPP User Name
 - PPP Password
 - My ISP does not require a username and password

3. Select the IP Type.
 - Dynamic IP-DHCP(Default)**

5. Confirm the default values (for dynamic) are selected.

Then, select the **Apply** button to save your settings.

My ISP does not require a username and password

3. Select the IP Type

Dynamic IP-DHCP(Default)

Single Static IP Address

Block of Static IP Addresses (Unnumbered Mode)

Single Static IP

Gateway Address(Unnumbered Mode)

Subnet Mask(Unnumbered Mode)

Optional

Select the DNS type.

Dynamic DNS Addresses(Default)

Static DNS Addresses

Primary DNS

Secondary DNS

4. Now click **Apply** below to save your changes.

Copyright © 1999-2005 Actiontec Electronics, Inc.